

52 Ingestre Street, Wanganui. Phone 345 3666 or 345 3655, fax 345 2644, email rivercitypress@xtra.co.nz

Sandy Mcdougall bringing Hospice to the community with Laser Light Show

BY DOUG DAVIDSON

Sandy Mcdougall was born and bred in Whanganui but always planned to leave, earn some good money and return to buy a lifestyle property. She achieved that working in the oil and gas industry at Marsden Point and in the LNG industry on the Burrup Peninsula in Western Australia in the field of Contracts Management.

She says, "I've always had amazing mentors who have told me - you can do that."

She actually 'retired' in her 20s but soon got bored and ended up working for a high-end housing construction company in Perth. She came back to Whanganui for family reasons and again 'retired' but that didn't

last long either. She set up her own business doing the books for different companies but she missed the interaction with colleagues.

In 1996 she moved to the Hospital Board using her contract management skills managing non-clinical support services which had been contracted out. By the end of 2016 the

hospice project she was working on was ending and Sandy moved to a new position at Hospice Whanganui as Operations Manager.

In this role she is responsible for organising fundraising events, overseeing the retail shops and running the infrastructure services at Hospice including everything from IT to buildings, to phone services. She says, "It covers everything non-clinical except payroll and HR."

Her initial focus was overseeing the building extensions at Hospice, which were completed in May 2018. Her first large scale fundraising event was the Hospice Fireworks events in November of 2017. Over 3,000 attended the professional staging of fireworks.

She is now organising a laser light show at Cooks Gardens for Monday, October 14. A New Zealand company, Flying Pictures, which has done laser light shows around the world, will be running it. Sandy

believes "it will be the first ever laser light show in Whanganui. It will be massive." The doors open at 6.30pm and pre-laser light show entertainment will be provided by bands from Whanganui High School as well as a 20 minute performance from a Japanese drum team from the International Pacific United Institute in Palmerston North. The laser show will begin at 7.45 and end by 8pm.

These large scale events are more than fundraisers for Hospice, says Sandy. "It is part of reconnecting Hospice to the community." She recalls the days "when we had family friendly events in Whanganui such as the Big Dig In at Castlecliff Beach, District Council organised fireworks at Guy Fawkes and Top Town events."

The Laser Light Show is very much a community event. Sandy ran a competition among school kids to design a billboard. (The winning entry was pictured in the RCP in the

September 5 issue). Spectators are invited to bring a picnic meal and rugs to the event. There will be food and coffee carts if you want to buy your picnic meal instead.

Sandy advises that, "The best place to watch the show is in the centre on the grass, facing the bell tower. The lasers will be set to music and will wrap around you while you watch."

Sandy has done her research and the reason why the event is on a Monday and the first day return to school, is that is when the full moon will be present. According to Sandy's research, "there is a strong correlation between a full moon and calm weather. And if it was any later in the year, it would be too late in the evening for the young ones."

The lasers will shine through a smoke machine, "which will create amazing effects, making it so much more dramatic," adds Sandy.

Continued on page 2



Sandy Mcdougall Hospice Operations Manager

1 Furniture Done

OPEN 7 DAYS

Locally Owned & Operated
 151 St Hill Street, Wanganui
 Phone 06 345 6084

Springtime - a great time to sell!

FREE MARKET APPRAISAL

FREE MARKETING PACKAGE



Marion Farr

Nat Cert in Real Estate

021 572 033

marion.farr@raywhite.com

Licensed Salesperson REAA 2008



VOTE

Ross Fallen
 for Council

A robust voice for our residents

From Community Advocate to the Council Chamber

It may be too late to post. Place your vote directly into the ballot box at council by 12noon, Saturday, October 12th.

Email: dandc5821@gmail.com

Phone 022 430 5818



Ross Fallen for Council 2019

Authorised by Steve Selfe, 9 Tauapata Street, Whanganui



SCOOP PURCHASE IN JAPAN

2008 - 13 Mazda demio (Mazda 2)

All 5 door
 Automatic
 Low kms
 Great colours

Genuine savings up to \$2000 OFF
 Now from only **\$7950.00**



Harvey Round Motors

Ph 06 345 0233

44-50 Dublin St, Wanganui.

Monday-Friday 8am - 5.15pm

Saturday 9am - 4pm

ISUZU

PROTECTOR

mta

www.harveyround.co.nz



Hampshire

Floor Area: 132.1 Sq.Mtr

Garage Area: 38.0 Sq.Mtr

Verandah Area: 3.2 Sq.Mtr

202.1 Sq.Mtr



Contact
Bernard REUTERS
 165A Great North Road, Wanganui.
Phone: 06-345 2393

Email: reuters@devonhomes.co.nz

Mobile: 0274 495 125

www.devonhomes.co.nz

DEVON Homes
 More than just a house

We also specialise in alterations, additions and light commercial.

Check out what's in this week's RCP

Sandy McDougall is full of bright ideas and a risk taker. (See our front page article). Hopefully the weather and Whanganui people will combine to make the laser light show on behalf of Hospice a great success on Monday.

Many of the articles in this week's issue are about entertainment options coming up. On Thursday, October 10 there is an interesting talk at the Museum on 'Guided by the Stars' on the navigational skills of early Polynesians (page 28).

This Friday, October 11, Greg Copeland will be playing the blues (page 10) and on Sunday, October 13, it will be great to have Debbie Wai Kapohe back for a concert along with the talented duo of Donald Trott and Ingrid Culliford (page 14).

On Tuesday Jim Campbell will be talking about his time on Campbell Island (page 23). The RCP featured



Doug Davidson,
journalist@
rivercitypress.co.nz

Jim on our front page earlier this year.

There will be two events on Thursday. Prize winning writer and 2020 recipient of the Katherine Mansfield Menton fellowship will be talking at the Sarjeant (page 4) and at the same time, it will be the Chamber Music concert with the Jacquin Trio (page 4).

That is not bad for a sample of a week's entertainment.

- Doug Davidson

Sandy McDougall bringing Hospice to the community with Laser Light show

Continued from page 1

The pricing is such that it will appeal to most families. A family ticket for two adults and three children is \$30, adults are \$10, children from five to 12 are \$5 and those under five get in for free. You can avoid queues by buying your tickets from the Opera House or you can buy at the gates with cash or eftpos.

There are some rules to be aware of. No glass, no smoking or vaping and no alcohol. Bags will be checked.

Sandy has been, and remains, a confident risk taker. So if it rains the show will go on and the laser lights will shine through just as well.

Best Start celebrate 10 years with successful gala

Sheep, goats, horse rides, dog agility trials, a bouncy castle and a fire truck and heaps of food - Best Start pre-school sure know how to celebrate in style.

The weather couldn't have been more generous on Friday afternoon when their little corner of Whanganui became a miniature festival. Throngs of people turned out to celebrate the ten year anniversary of the opening of the centre, with attractions and entertainment for young and old.

Particular favourites included the animal pen, where young children got the chance to cuddle and play with lambs and kid goats. Some dared a ride on the horse Midget, with the help of guide Jono, while others marvelled at the controls in the cockpit of the fire engine.

Penny Sharp, Teacher-Aide and organiser of the Gala told the RCP, "We were very happy at the turnout of parents, children and the community."

Best Start Glasgow St wants to thank their sponsors - Gourmet Express Caterers, First Steps,



Christies Pies, Country Café & Playland, Mars Pet Care, Hygiene House, Murray's Appliances, Pak n Save and Countdown Trafalgar Square. Special thanks go to Office Max for the gift of a laptop as the first prize and both the Fire Service and Police for bringing and showing off their vehicles.

River City Press -
email: rivercitypress@xtra.co.nz

\$56,500 grant from NZCT for Wanganui's Cemetery Circuit

The famous motorcycle street racing event has been held annually on Boxing Day since 1951. Around 250 riders compete with up to 10,000 spectators enjoying the thrill of tight racing that street circuits are renowned for.

The Wanganui Motor Cycle Club undertakes the mammoth task of organising, promoting and running the Cemetery Circuit event. The safety of the riders and spectators is paramount and the club recently received a significant grant from NZCT towards new air fences for the event.

"The NZCT funding is crucial for the future of Cemetery Circuit," says Julie Willacy, spokesperson for the Wanganui Motor Cycle Club. "Without the massive safety measures which the air fences provide to competitors, we may not get Motorcycling New Zealand permits to run the event."

The use of hay bales for safety is being phased out and the club hopes to eventually use air fences completely for the event's safety needs. Other community and sporting events in Wanganui will also be able to use the air fences.

Motorcycling is very popular in Wanganui and the club has over 200 members, including some in their 80s. The local community backs Cemetery Circuit every year.

"We have so many busi-



nesses that offer support, sponsorship and equipment to help the event," says Julie. "There are also so many volunteers and helpers that religiously come along every year."

Cemetery Circuit attracts a lot of famous international riders each year. Past winners include Guy Martin, Michael Dunlop and Connor Cummins. It is the third and final round of the Suzuki International Series, New Zealand's largest motorcycle series.

The \$56,500 grant from NZCT will also help fund the administration needs of the event.

"The support from NZCT is very much appreciated. We have had very good and supportive experiences with them and they are very helpful," says Julie.

**SALE
ON NOW!**



NZ DISTRIBUTOR

**DANSKE
MÖBLER**

* Some exclusions apply. For a limited time only.

WANGANUI FURNISHERS

33 Victoria Ave | 06 345 4554

Open Mon - Fri 9am-5pm, Sat 10am-1pm

enquiries@wanganuifurnishers.co.nz

www.wanganuifurnishers.co.nz

**We
know
teeth.**

VICTORIA DENTAL

Make an appointment today

06 345 3222

Visit us at Victoria House

1a Rutland Street, Wanganui

Hadleigh returns from volunteer dentistry stint in Senegal, West Africa

Hadleigh Reid of Victoria Dental recently returned from fifth stint doing dentistry in Africa with the charity Mercy Ships. This time it was three weeks in Senegal. Previously Hadleigh had been to Congo Brazzaville, Beni, Camerouns and Guinea. You will probably need an atlas to locate these countries which are on the west coast of Africa.

Hadleigh says, "Senegal is probably the most advanced of the African countries I have worked in and while on a global scale it is a relatively poor country, there are some positives." They include "an almost brand new airport and some good infrastructure. The motorways were the best by far that I have experienced." However, there is also extensive pollution especially the smog and the oil. "But," he adds, "the people pride themselves on living in a peaceful country."

He gives the following example of life in Senegal. "One Saturday 30 of the volunteers went on a bus trip to a safari park and then to dinner in a nearby village. We were taken to an island where there were pigs, somewhat unusual for a Muslim country. But on this island the people were half Christian and half Muslim. They all get on and work well together. It was also the cleanest area I had experienced in Africa." He adds, "Sen-

egal was the friendliest of the African countries I have worked in."

This time Hadleigh worked as the dentist for the long term crew members – about 200 of them.

"It was not as exciting when I worked for the locals on land but it was great being part of the ship community this time and you knew you were helping those working with the locals."

Some of the long term crew are really long termers. Hadleigh gives the example of Gary Parker who has lived on board ship for over 33 years. "He really inspired me. Gary was a dentist on the ship when he trained as a Maxillo Facial Surgeon and now works on big jaw reconstruction operations frequently caused by tumours. Gary is so nice, patient and gentle."

"You build up relationships and friendships with your colleagues very quickly. You have meals together and in the evenings play games and sports and on the



Hadleigh Reid

weekends, go out exploring. We all have similar goals."

The volunteers come from all around the globe. While most used to come from the UK, North America, Australia and New Zealand, Hadleigh met some from Japan, India, Eastern European and Scandinavian countries. While most are Christians, not all are.

Why does such a busy man do regular overseas stints volunteering? Hadleigh is committed to using his skills to help others. Whenever he sees an opportunity to do something different and challenging – he accepts.

Hadleigh chose to go over September when there were no council meetings. He has also missed most of the local body campaigning but that should not be a problem for someone who was top of the poll in his first attempt at becoming a councillor back in 2016.

'Bring on Summer with Whiskey Mama' - Labour Weekend



Ocean Loaf

Popular local band, 'Whiskey Mama' supported by two Whanganui High School Bands, will be playing at Caroline's Boat Shed on Somme Parade on Sunday, October 27 – the Sunday of Labour weekend.

Fred Loveridge of Whiskey Mama says, "We bring along our fully equipped truck, park in the car park, open up the stage and play." They have played at Caroline's before and the patrons and concert goers love the chance to sit back, relax and listen to the music while ordering drinks and meals. There is no entry charge.

The two High School bands are:

- Ocean Loaf. They do their own material and covers and Fred describes their music as mainly 'Indie Pop.'

- Rhythm Vision. They also play mainly their own material, written by guitarist Dan Godwin. Their style is 'Prog (progressive) Rock.'

Whiskey Mama play Classic Rock covering everything from the Pretenders through to Deep Purple. As Fred says, "We have diverse song choices." They have been together for a couple of years although

as individuals, the five band members have been performing for a long time.

Fred says, "We really enjoy playing together and most weekends we are out somewhere." This includes up to Auckland and down to Christchurch. They are especially popular in Taranaki to the point "we could describe ourselves as a Taranaki band." They will be doing a combined trip soon with a gig in New Plymouth on a Friday night from 5pm to 9.30pm and another in Tauranga on the Sunday for a 50th Motor Cycle club celebration in Tauranga for another four hour stint.

'Bring on Summer' concert is from 2pm through to around 6.30pm.



Rhythm Vision



Whiskey Mama



Top Service • Top Workmanship • Top Electricians

- 24/7 Service
- FREE Quotes
- Member of HAZARDCO
- For all your electrical requirements

Summit Electrical Services Ltd

0800 2 SUMMIT

0800 2 786 648

Todd Cowan - 022 325 0056



Electrical Contractors Association of NZ

SALE

up to **30% off**

Resene Premium Paints, Wood Stains, Primers, Sealers and Wallpaper

plus 25% off Decorating Accessories and Cleaning Products

Come in and see us today!

Whanganui Resene ColorShop
Cnr Wilson & Ridgway Sts, (06) 348 0048

Resene

the paint the professionals use

Discounts off the normal retail price until 4 November 2019 at Resene owned ColorShops and participating resellers. Paint offers also available at participating Mitre 10 MEGA/Mitre 10 stores. Valid only with cash/credit card/EFTPOS purchases. Not available in conjunction with account sales, promotional vouchers/coupons or other offers. Excludes trade, ECS, WallPrint, wall decals, Crown products and PaintWise levy.



Family Interactive Film Screening

Saturday 12th October 2019
Davis Lecture Theatre
12 noon till 3.30pm

FREE ENTRY

WHANGANUI FESTIVAL OF CULTURES

FOOD & FUN FOR EVERYONE AFTER THE FILM

- * Some light snacks
- * 'When I was Eleven' Photo booth
- * Video Interview for Young Minds
- * Same | Same | Different | Different an interactive crowd game
- * World Wide Web - 'Wish I were there' an activity pin board

With support from



Gonville superValue
just what you need

THIS WEEK'S SPECIALS

Beef Mince

\$7.99
kg



\$20 Trays Chicken Maryland

1/2 Price only
\$10.00
each



WEEKEND SUPER SPECIAL - STARTS FRIDAY

\$5.99
kg

Fresh Casserole Pork Chops or Steaks - Ideal for Boil Up and Slow Cookers

NEXT WEEK'S SPECIALS - STARTING 14.10.19

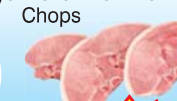
Fresh Diced Chicken

\$8.99
kg



\$20 Trays Frozen Pork Loin Chops

1/2 Price only
\$10.00
each



10kg Boxes Brisket Bones
Still Only \$19.99 each

Fresh NZ New Season Strawberries
\$4.99
each

PRODUCE

Bi Colour Grapes 500gm Punnet

\$4.00
each



Carrots Prepack 1.5kg

\$2.49
each



All items while stocks last (no rainchecks). Get in early.

47 Abbot Street, Gonville. Ph 06 344 3002
Open 7am-8pm - 7 days

Poet, essayist, novelist & Katherine Mansfield Fellowship winner, Sue Wootton to speak at Sarjeant



Sue Wootton

Sue Wootton will be returning to her birthplace, Whanganui to give a talk at the Sarjeant Gallery on Thursday, October 17. She will talk about her life and work as an award-winning poet, novelist and essayist and to remember the Whanganui that formed her and which appears in her stories.

She will be discussing her latest novel which is about a group of friends affected by New Zealand's 1948 polio epidemic. While in Whanganui she will be visiting the site of the former Duncan Home and Hospital for polio, where some of the novel is set.

Sue told the RCP

that she remembers her neighbour while growing up in Whanganui, who had polio, and not understanding why she was forced to wear callipers or have crutches. Sue was also a physiotherapist and an acupuncturist and worked with patients who had polio.

She points out that polio has not gone away, although it is currently restricted to a couple of countries. It can come back in later life. "However," she says, "it has gone under the radar currently."

Her most recent publications include the novel 'Strip' which was long listed in the 2017 Ockham NZ Book Awards and her fifth poetry

collection, 'The Yield,' which was a finalist in these awards in 2018. Thanks to Paiges Book Gallery, her books will be available for sale and signing on the night, including her children's book 'Cloudbatcher.'

While not writing, Sue is working on her Ph.D, researching the importance of imagination and language in recovery and wellbeing. She says, "I'm exploring the concepts of wellbeing and being well without pain. In this context the importance of patience is somewhat underrated."

Sue has just been announced as the 2020 Katherine Mansfield Menton Fellow which provides for her to spend

three months or more in Menton, in Southern France and she will be dedicating the time to work on new poetry.

She says, "I'm looking forward to coming back to Whanganui. I know that friends and family will also be coming to my talk. I remember visiting the Whanganui Library every Saturday and now looking back, seeing how reading, writing and telling stories have become so central to my life."

The talk is at 7.30pm at the Sarjeant on the Quay. Tickets cost \$12/\$10 and that includes homemade cake and coffee. Bookings can be made by phoning 349 0506.

Classical chamber music concert next Thursday by talented overseas trio

To complete their highly successful celebrity subscription series for 2019, Chamber Music Wanganui, in association with Chamber Music NZ and ROSL (Royal Overseas League) bring us the Jacquin Trio on Thursday, October 17, 7.30pm in the Prince Edward Auditorium of Whanganui Collegiate School.

The Jacquin Trio are an audacious classical chamber ensemble,

dedicated to exploring, expanding and celebrating music for the inimitable combination of clarinet, viola/violin and piano. The only group to have won both the Royal Overseas League and St Martin in-the-Fields Competitions, the Jacquins have been making music together for the best part of a decade. In this concert, they will perform romantic music for clarinet, viola and piano by Brahms, Bruch



Kay Stephen (viola), Charis Hanning (piano) and Jessie Grimes (clarinet)

and Glinka, as well as Beethoven and a short piano solo by Dame Gillian Whitehead.

Noted for their lively audience rapport and ease in a variety of settings, the Jacquins bring passion, energy and a raucous sense of fun to every performance. They were privileged to benefit from a long association with Live Music Now, where they developed a strong commitment to taking music outside of the concert hall. Since completing their tenure with Live Music Now, the Jacquins have developed relationships with organisations such as Arts 4 Dementia and Bach to Baby, in addition to developing

their own projects.

Individually, each performer pursues a highly successful musical career. London-based Irish clarinettist, Jessie Grimes, is a chamber musician and orchestral player, as well as a teacher, presenter and creative workshop leader.

Kay Stephen is from Aberdeen and plays both violin and viola. As such she is in demand with orchestras such as the Hallé, Royal Scottish National Orchestra, BBC Philharmonic and the City of London Sinfonia.

With family roots in Vancouver and Hong Kong, pianist Charis Hanning has made

London her home. She is experienced in solo, accompaniment and chamber music and loves most of all to collaborate with others. As well as being a founding member of the Jacquin Trio, Charis has worked with instrumentalists and singers from around the world.

Chamber Music Wanganui is grateful to Dalgleish Architects who have specifically sponsored this concert.

Tickets can be purchased in advance from the Royal Wanganui Opera House Box Office, or at the door (no eftpos). Adults \$35.00, Seniors \$32.00, Subscribers \$20.00 (or pre-pay) Students \$5.00

Springvale Manor REST HOME

We have a special dementia unit.

If you want a lovely family caring atmosphere we are the place.

You're welcome to call in to see what we have to offer.

Call 348 8003

47 Treadwell Street Wanganui.

independence **purpose** **fun** **trusted** **active**

enliven
PRESBYTERIAN SUPPORT CENTRAL

community **variety** **caring** **support** **choice**

A REST HOME WITH SPARK Kowhainui Home

88 Virginia Road, Otamatea, Whanganui

Offering rest home and hospital care, respite, health recovery and a popular day programme.

An Elder-Centred Community

Kowhainui Home is more than just a rest home, it's an elder centred community that recognises older people as individuals and supports them in a way that's right for them. We offer companionship, choice, variety, meaningful activity, independence and fun.

Family and Friends

Kowhainui Home is like one big family. Residents are encouraged to invite their loved ones to visit at any time; there's no set visiting hours.

Pets Welcome

We believe pets can be both calming and energising. So, we welcome animals at our home. If you have a pet that's part of your family, ask us about moving to Kowhainui Home with them.

Free phone 0508 ENLIVEN or visit www.enlivencentral.org.nz

A witty timeless tale with a twist for Fordell School production

Meet the breeders day at Poultry Club

It sure was an "open sesame" of treasure-trove fun and laughter for the last week of Term 3 as Fordell School took stage for what has become their annual production. This year it was a witty timeless tale with a twist: Ali Baba and the Bongo Bandits. Just like every other year it certainly was a well organised and entertaining performance that just shows small schools certainly should never be underestimated.

This year's production was set in the ancient city of Old Baghdad. The bustling bazaar is over-run with ruthless robbers, while up in the palace Sultan Pepper's, played by Elijah Anscombe, precious Princess Satsuma, played by Abi McLeay and royal ruby have vanished. To make matters worse, it seems the poor Sultan could not trust his own vizier, Mustapha Widdle, played by talented, Anya Sewell. When Ali Baba, Lennox Brotherton, discovers Balthazar Bongo, played by Caleb Houlihan and his bumbling bandits' secret Cave of Wonders, it is up to him to save the day. But then his ravenous, tap-dancing camel Humphrey bit off more than he could chew causing Ali to be accused



of royal robbery, his fate seemed as sealed as the Cave of Wonders itself!

All 110 Fordell School students had stage appearances. Students are involved in all aspects of the production from learning lines, acting, singing, dancing, lighting, sound effects, creating scenery, props and the programme to choreographing dances for other students. Principal, Yvette Moorhouse said, "We like to draw on all the strengths of our students and create opportunities for them to shine. We are very proud of all our students, each year

they continue to grow in talent and skills. We are also very fortunate to have the amazing community that get right behind us supporting staff and students in many ways. It really has been a lot of fun and we all enjoy this time together."

This hysterical show was filled with mystical mayhem and a swag-bag of laughs right from the start to the finish and the talented Fordell School students certainly pulled it off creating an Arabian night that the audience thoroughly enjoyed and would not forget.

The Whanganui Poultry club will be holding a 'Meet the poultry breeders' day on Saturday, October 19 for the benefit of the public. It starts 12.15pm and goes through till 1.45 pm. The location is the Mathieson Street hall.

Members of the club, who breed poultry, will have their birds on display. Some birds, eggs to hatch and poultry products will also be for sale.

Anyone interested is welcome to come along, have a cuppa, see the birds and chat to the breeders.



FOR THE BEST HIRE EQUIPMENT IN TOWN

MARQUEES • MACHINERY HIRE
PARTY HIRE & SALES

HARRISON'S
hireMaster
WANGANUI
26 CHURTON STREET PH 345 7017



GREAT RANGE OF PORTABLE TOILETS AND SHOWERS



www.hiremasterwanganui.co.nz

DAVID JONES
MOTORS
Proudly Supporting The Community For **35 YEARS**



2016 SUZUKI SWIFT SPORT



Packed with punch! Body kit, duel exhaust, push start, bucket seats, alloys, only 23,000kms, fantastic value

NOW \$16,995

2012 VOLKSWAGON AMAROK



4WD, only 106,000kms, lockable hard lid, towbar, side steps, beauty in black.

NOW \$29,995

2006 MERCEDES BENZ SLK 200



1.8L petrol, convertible, only 93,000kms, leather & heated seats, alloys, luxurious vehicle, a real cool car.

NOW \$11,995

2012 SUZUKI SX4 LTD



2.0L, Auto, NZ new, 90,000kms, high seating, roof rails, alloys, great visibility, easy to drive, full service history, immaculate.

NOW \$13,995

2018 MITSUBISHI TRITON GLS



4WD, Black edition, manual, push start/stop. Reverse camera, blacked out, sports bar, side steps, towbar, Tonneau cover, only 25,000kms, a great buy.

NOW \$34,995

2008 SUZUKI SWIFT



Cheap & reliable runner, light blue, tints, high seating, fuel efficient & fun to drive

NOW \$7,995

2009 MAZDA CX-7



2.3L, loaded SUV, memory seats, only 86,000kms, Bluetooth, reverse camera, tints, top of the line cruising package.

NOW \$14,995

2017 SUZUKI VITARA JLX



1.6L, Popular SUV, fuel efficient, only 58,000kms, reverse camera, alloys, high seats, sporty SUV!

NOW \$19,995

2015 SUZUKI CELERIO GLX



1.0L, Manual, only 31,000kms, NZ New, economic & reliable, immaculate, great little hatch.

NOW \$10,995

2008 MERCEDES BENZ C63 AMG



6.2L, V8 super car! Serious machine, alloys, body kit, dual exhaust system, full leather, paddle shifters, sexy and loads of fun!

NOW \$34,995

2012 FORD FOCUS



1.6L, auto, body kit, only 76,000kms, DTM alloys, tints, big boot, sharp in white, great car, awesome buy.

NOW \$12,995

2012 MAZDA 6 GSX



NZ new, sleek in black, powerful & sporty, alloys, body lit, chain driven, only 114,000kms, great buy.

NOW \$12,995

Phone 06 345 5115 | www.davidjones.co.nz
276 & 330 Victoria Avenue, Wanganui

Mystery donation a boost for hospital art

A mystery \$5000 donation has delighted staff at Whanganui Hospital.

The anonymous donation arrived in the form of a cheque last month with instructions that the money should go to the hospital's Art and Archives Group.

"We are extremely

grateful for this generous gift," said Whanganui District Health Board Chief Executive, Russell Simpson.

"And we will make sure it is put to good use by our Art and Archives Group."

While the DHB is always working to keep people well in their homes, there

are times when people need to come to the hospital and it can be a difficult and daunting experience. Staff are always looking for ways to make it more friendly and welcoming.

The Art and Archives Group uses art and archival material (including photography and interpretation panels) to improve

people's experience of the hospital.

"Artwork is carefully chosen for each setting to help humanise the otherwise large and clinical corridors and spaces, anchoring the place in the district and community and to reflect the outside

environment."

Research has found using local art, images of nature, light and potted plants can improve the experience for people in a healthcare situation.

The group recently ran a public photo competition which attracted more than 200 entries, and is preparing

a number of submitted images to go on the walls of the corridor that serves the therapy departments. It was also involved in an archival display for Whanganui's Heritage Month.

Future plans include the development of a "memory hub" in the Assessment,

Treatment & Rehabilitation ward displaying 16 black-and-white photographs of Whanganui in the 1920s to 1960s. The hope is these prints will be of interest to patients, family/whānau and staff and may also stimulate memories for patients suffering memory loss.

Welcome to ARAMOHŌ

Aramoho Whanganui Rowing Club announces the 'Lloyd Thomson Coxswain Shield'

The 'Lloyd Thomson Coxswain Shield' to be awarded by the Aramoho Whanganui Rowing club (A.W.R.C.) came about when the extended Thomson family were looking at old family photographs and realised that their father and brother had coxswained for the Aramoho Boating Club winning crews in the Tesla Fours twenty years apart, 1932-33 and 1952-53.

The family approached A.W.R.C.

who was more than happy to accept the Thomson Shield to be awarded to the coxswain who accumulates the most points for A.W.R.C. in the Whanganui Rowing Association Winter regatta series.

The Thomson family has a long association with the Whanganui River and the Aramoho area. Lloyd senior, always known as Tommy, started his working life in the family bakery delivering bread around

Whanganui. Later he purchased a butchers shop on the corner of Caffray Ave and Somme Pde. The building is still there today.

On returning from WW2, Tommy bought a Fish and Chip shop next to the then Aramoho Hotel and in 1949 the

family home was built in Caffray Ave. In 1960 the family moved to Auckland but Tommy and Thelma moved back to Whanganui in 1971. He died in 1994.

Lloyd Junior was coxswain with The Aramoho Boating Club with a high degree of

success from 1952 to 1955 including winning the prestigious Red Coat NZ Championship Senior 4 at Wairau in 1955. The crew comprised, Max Lawrence - stroke, Bill Bennett, Mike Potaka, Ron Dempster and Coach, Les Clark - all well-known Whanganui identities.

Lloyd later lived in Christchurch, married and had a son Lloyd the third, who has an associate membership with A.W.R.C. today. He died in 2015.

There are other family connections to the river and rowing. Thelma Thomson's father, Mark Mikkelsen, was a river boat captain of the Waione and the Waimarie from 1928 to 1936.

The Thomson family's uncle, Raymond Mikkelsen, was a coxswain at The Wanganui Rowing Club. In 1932 he coxswained The Women's Eight Oar for McKenzies against

Woolworths. Both McKenzies and Woolworths were variety stores of the time.

While in Egypt during WW2 Raymond rowed alongside other N.Z. servicemen out of The Cairo River Club. The base camp was at Maadi and so the Maadi Cup came to be the prestigious rowing regatta for Secondary school rowing in NZ.

The Thomson family still have associate membership at the A.W.R.C. While they no longer live in Whanganui, they visit the

River City and enjoy a drive around to see what they remember.

The Thomson Shield will be presented on Sunday, October 13. Lloyd Junior's brother, Neil will be coming from Australia for the presentation, which will take place at the Union Boating Club about 11.00am/11.30am as it's their turn to host the morning tea and award the race place-getters, after the completion of the 6k Tonks small boats winter series regatta.



The Lloyd Thomson Coxswain Shield



Aramoho Whanganui Rowing Club

NEWLY RENOVATED LOUNGE FOR HIRE

- Conferences
- Meetings
- Regular Forums such as cards, music etc.

Lounge equipped wifi, 2 x large smart tv's, sound system & security. On site catering options.

Enquire Carolyn Wills copperdog2010@windowslive.com



COOPER TYRES
"Your Local Tyre Guy"
MAXXIS

FREE SET OF STEEL WHEELS WITH MAXXIS BIGHORN MT AND RAZR MT TYRES!

FREE STEEL WHEELS

OFFER VALID OCTOBER 2019. WHILE STOCKS LAST. CONDITIONS APPLY. SEE INSTORE FOR FULL DETAILS.

Phone 343 8706

191 Somme Parade, Wanganui

Churton School
Ki Te Ao Hou
To the New World

ENROL TODAY

(06) 343 9406 or email office@churton.school.nz
Burmah Street, Aramoho, Wanganui

Easi-stor SELF STORAGE

KAIKOKOPU RD WANGANUI

AGENTS: The Rent Centre MREINZ
PHONE 347 7867

A/h Tony Gnida 348 4933, Mobile 0274 975 445
18 Bell St, Wanganui. Fax 06 345 1527, Email: rent@xtra.co.nz

New Tylee resident announced

The Sarjeant Gallery has announced the latest artist in residence at Tylee Cottage for the period September 2019 – January 2020, Marie Shannon.

Photography and video artist, Marie Shannon's project while at Tylee, seeks to display the Whanganui River through a series of photographs and video work. Capturing the river mouth at different times of day and in different weather conditions, to encapsulate and convey mood and atmosphere. She plans to focus on the details of the water as opposed to the landscape or location.

While a resident at Tylee, she also plans to take advantage of the space around her, by photographing the interior details of the cottage and constructing models from these details.

Marie Shannon works in the media of photography, drawing and video. She graduated from the University of Auckland's Elam School of Fine Arts in 1983 with a Bachelor of Fine Arts. Her work frequently draws on her immediate environment and she is interested in presenting the seemingly mundane, or the easily overlooked aspects of everyday life.

She uses a large-format analogue camera and her still photographs are characterised by finely rendered detail.

Revisiting an earlier interest in text in images, she has in the last few years, made a series of loosely related video works that use text, either rendered visually on screen, or as voiceover sound.

The Tylee Cottage artist in residence programme is run by the Sarjeant Gallery and was established in



Marie Shannon

1986.

To date, over fifty artists have participated in the programme including many who have become some of New Zealand's most accomplished visual arts practitioners.

Several have made Whanganui their home. This latest round of artist submissions was called for in late March and the application period ended on May 25.

Three available residencies drew close to 50 applications. The programme is an opportunity for artists with New Zealand residency outside Whanganui, to develop a body of work while living financially unburdened at Tylee; their expenses covered by the Sarjeant Gallery in its role as a cultural facility of the Whanganui District Council.

A \$4000 monthly stipend is provided by Creative NZ. The aim is that the residency will culminate in a solo exhibition at the Sarjeant Gallery and a work from the residency will be donated to the Sarjeant Collection.

Scam of pig snouts and eels

During World War Two there was a superabundance of wild pigs around Te Maire on the upper Whanganui River. So many that the authorities placed a bounty on them to encourage the local farmers to cull the pigs. They could make money by bringing in snouts from those animals they killed.

However, a few of the local children discovered that they could make realistic looking pig snouts from eels. They would cut off segments of small eels, punch a couple of holes in them for nostrils and then dry them in the sun until they shrivelled up. The resultant grisly token looked so much like a dried pig snout that the authorities were fooled

for a while and paid up.

The scam was too good to last and eventually this source of pocket money

dried up for the children.

This article is from The Whanganui River Annual 2005.

Re-elect
ALAN TAYLOR
TO COUNCIL



IF you are still to vote... Alan TAYLOR believes in future proofing your water services, roads and footpaths.

Electing TAYLOR will ensure these concerns are brought to Council.

Authorised by A.R. Taylor, 28 Blueskin Road, Whanganui

Create the future you want!



AGC Training offers programmes in:

- Agriculture
- Milk Harvesting
- Animal Care (Equine or Companion Animals)
- Rural Animal Technology
- Vet Nursing Assistant
- Building & DIY
- Painting & Decorating
- Carpentry

Open Day!
Thursday 17 Oct, 10:30am

FEES FREE.
govt.nz

For more information call 0800-348 8215

www.agchallenge.co.nz



TRAINING
FOR INDUSTRY

CHALLENGE YOUR FUTURE | WHAKAAEHIA TO WERO

naturalwear

SPECIALTY FITTERS

POST MASTECTOMY BREASTCARE TEXTILES
COMPRESSION STOCKINGS AND ARMSLEEVES



Wanganui Cancer Society, 2 Koromiko Road
WEDNESDAY 16 OCTOBER

Call Kerilee on **0800 622 397** to book

REGISTERED PROVIDER **WWW.NATURALWEAR.CO.NZ**



WE HAVE MOVED

Now at 78 WILSON STREET

Signs & Engraving move to bigger premises

Signs & Engraving recently moved from Somme Parade to their new bigger and better

premises at 78 Wilson Street. The business itself has been around

for over 70 years with current owners Stuart and Sandra Wylie having bought it 20 plus years ago.

The new premises are not only more customer friendly but also make for easier, more efficient working. The main customer entrance is on Wilson Street, between A Plus Plumbing & Laser Electrical, where you can park in front of the reception doors. There is another entrance in Hardy Street to drop off and pick up larger items.

Signs & Engraving's range of services is extensive. In the



engraving side they

The Beetle and the van showing off 'Signs & Engraving'

can do: Trophy sales and engraving; Name badges; Memorial plaques; Door plates; Desk signs; Fire alarm panels; Stencils; Brass plaques and Commercial engraving.

Likewise with sig-

nage, they will supply building signs and for other sites, road and street signs, real estate signs, vehicles, billboards (they have been busy with the latest elections), whiteboards, digital prints, small

decals, vinyl lettering and banners. They also supply teardrop flags, sandwich boards, vinyl lettering, plus they will do your graphic design should you need help with designing your logo etc.

Congratulations with the move to your new premises Stu & Sandra!
From one Locally Owned and Operated Company to another!



Corner
Wicksteed & Ingestre Streets
www.rivercitypress.co.nz
Phone 06 345 3666



*Proud to be associated with
Signs and Engraving*

Specialist:

- Pipe Welders
- Fabricators
- Stainless Steel Fabricators
- General Engineering
- Factory Installations & Maintenance

Ph 06 344 5425 or 027 687 2733
email reeseng@xtra.co.nz

Cremate-a-Mate Pet Cremations

Individual cremation
Scatter box - Rimu box - or your own urn
2-3 days turnaround where possible
Pick-up & delivery included



Bryce & Sandy
06 348 0133

cremateamate@xtra.co.nz
Wanganui



Proud to be associated with
Signs & Engraving

*Congratulations
on your move!*

Plumber Dan

Registered Plumber

Plumbing, Gasfitting & Drainlaying
Daniel Goldsworthy 021 635 517

WE ARE MOVING

From October 31 we will be at
26 VICTORIA AVENUE
The old BNZ Building next to Embassy 3



Japanese Restaurant
Dine in or Takeaway

51 Victoria Avenue
BOOKINGS 345 0444



*Greg and staff congratulate
Signs & Engraving on their move!*

ph. 027 545 9020
greg@accessengineering.co.nz
www.accessengineering.co.nz

444 Heads Road,
Castlecliff,
Wanganui

TOWN AND COUNTRY TV and surveillance SOLUTIONS

Graham Palamountain
PO Box 729,
Wanganui
06 343 2152
0274 423 068
gpandga@xtra.co.nz

*Proud to be associated
with
Signs & Engraving
Congratulations
on your move.*



ABK (2010) Limited
Advanced Building Komfort

Refrigeration, Electrical & Air Conditioning Engineers



Phone 06 348 8424

Fax 06 348 8425

205 Guyton Street, Wanganui 4500

ADVANCED BUILDING KOMFORT

Robert Redford classic a success at Age Concern fundraiser

The fundraiser celebrating International Day of Older Persons on Tuesday was not just a money raising event, but an opportunity for people to connect with their community.

The Age Concern fundraiser saw 75 people, including one schoolchild, attend the screening of film classic, Butch Cassidy and the Sundance Kid and was a great success says Manager, Michelle Malcolm.

The film was followed by two raffles and afternoon tea, on Tuesday, October 1. Kath Bourne won first prize in the main raffle.

The event was organised by Age Concern board member, Jan Bullen and her colleagues in collaboration with Michelle and staff at the not-for-profit organisation.

Jan, a retired Justice of the Peace and active member of the community says based on the success of this event, they plan to organise other events like this in the future.

"Age Concern are not-for-profit, so fundraising is a crucial activity for us and we are very grateful to all those who contrib-

uted."

All tickets to the event were sold and all funds go towards supporting the work Age Concern do in the Whanganui community. Age Concern works to enhance the wellbeing of older people by providing a range of services, relying on a committed team of paid staff and volunteers. Service provision includes, among other things, advocacy support; abuse response service; mobility assessments; health promotion.

In 1990 the UN General Assembly established October 1 as the day to celebrate and say thank you to all older people around the world. The date is celebrated across the globe and this year's theme is 'the Journey to Age Equality'.

"Here in Whanganui Age Concern wanted to take this opportunity to show their appreciation to all their members, friends and volunteers," Jan Bullen said.

"Without your support we wouldn't be able to do so much."

In her speech Jan thanked the various people who helped make this afternoon possible, including colleagues on the board she worked with.



Kath Bourne (right) won first prize in the main raffle.

Accountancy firm Spooner, Hood & Redpath contributed for advertising; Steve Caldwell Photography for the film; Lyn Wickham real estate agent, donated afternoon tea while Bayleys real estate provided the premises for the screening.

RCP - the good news paper



Age Concern board member, Jan Bullen hands out raffle tickets

**Vote #1
Tanya Brown
for
Whanganui DHB**



tanya brown for whanganui district health board

Make it Better Together

Authorised by Tanya Brown, 8 Western Line, Whanganui

3 Course Christmas Themed Dinner
\$55 per person
FRIDAY 21 NOVEMBER
Dinner at 6.00pm



The Grand Hotel is proud to present
ANDREW & KIRSTEN LONDON

with Special Guest
WAYNE MASON
(writer of 'NATURE', voted NZ song of the century by APRA)



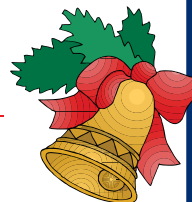
BOOKINGS ARE ESSENTIAL

WORK CHRISTMAS FUNCTIONS

Some dates still available
Menus from \$28pp

CHRISTMAS NIGHT BUFFET

Some spaces still available



WESTPORT WHITE BAIT

is back at the Grand Hotel Irish Bar

Single fritter salad and fries with a slice of bread

\$20

Two fritters with salad and fries and slice of bread

\$30

For a limited time only



THE GRAND HOTEL

Cnr Guyton & St Hill St, Wanganui
Ph 0800 The Grand, (06) 345 0955

Golf results

Castlecliff 9 Hole Club
Thursday 3rd October, MC Medal, **Ladies:** Joanne Knapp 34, Rawinia Connors 35, Pauline Grant 37.

Men: George Flintoff, Kevin Burke 37, Kevin Speer 38.

Raffle: George Flintoff.

Tawhero 9 Hole Golf Results

Metoo Competition: 8th October:

Men's Division 1: Ray Rahui 22, Sam McGregor 35, Peter Granger 36.

Men's Division 2: Leo Boyle 16, D. Johnston 30, Geoff Clark 30.

Ladies Division 1: Kaye How 21, Bev Shingles 22, Judy Hardaker 26.

Ladies Division 2: Joan Ogilvie 25, Maureen McIntyre 33, Jackie Downes 36.

for forgiveness if I did something wrong and forgive people if they have done me wrong. All these things I try to do with my music."



La Fiesta! Expressions of interest are now open

Pitched as New Zealand's coolest little festival, Whanganui's own unique celebration of women and community, "La Fiesta", is set to roll from 14 February to 8 March in 2020. The Women's Network coordinates this event every year, with the festival being the brainchild of its Manager and festival coordinator, Carla Donson. Invitations to participate in La Fiesta's eleventh festival celebration are now open to the public. If you have a great idea for an activity, or would like to run one, the Women's Network would love to hear from you. All activity and event ideas need to be submitted by 22 November. Previous festivals have featured food demonstrations, theatrical productions, documentary screenings, creative opportunities, musical performances and a host of activities to get people moving and having fun.

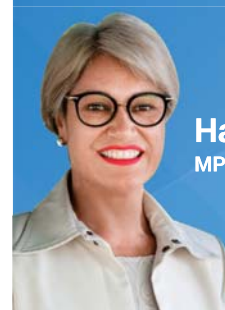
Ms Donson is thrilled that the programme continues to capture the imagination of people in Whanganui. It has also attracted visitors from across the North Island, as well as visitors from England, Germany, Australia, Canada and the United States of America. The festival earlier this year featured presenters from the Manawatu, Taranaki and Wellington regions. Ms Donson stands by her claim that La Fiesta is unique in New Zealand, and the line-up has previously featured some award-winning female musicians such as Anna Coddington, Amiria Grenell, Jess Chambers and Lisa Tomlins; with award-winning comedian Michele A'Court headlining the festival in 2016 and returning again in 2019.

One of the major focal points of the events programme is its celebration of International Women's Day [IWD] commemorated annually on 8 March. IWD was established in 1911 and is officially sanctioned by the United Nations as a day to reflect on women's progress and to continue challenging for change. Celebrated as a national public holiday in almost 30 countries around the world, IWD continues to be an important day for political mobilisation and consciousness-raising.

"La Fiesta provides opportunities for our community to meet incredible women going about their

ordinary lives in truly remarkable ways, demonstrating their can-do attitudes, courage and profound wisdom. It also showcases some men that are hugely supportive of women and women's leadership" says Ms Donson. The diverse people of Whanganui are the inspiration for La Fiesta and everyone is welcome to join the party. For more information about the festival programme or to register your expression of interest, contact the Women's Network ph [06] 345 6833, email: womnet.whanganui@gmail.com or visit the official festival website: <http://lafiestanz.com>

Proudly supporting our region.



Harete Hipango
MP for Whanganui

Suite 7
210 Victoria Avenue
Whanganui
Phone 06 348 9150

International Blues artist performing in Whanganui Friday

The sounds of the Deep South will be resonating along Wilson Street this Friday, October 11.

Lucky Bar host Blues musician, Greg Cope-land, as he makes his way across New Zealand one show at a time. Music starts at 8.30pm, tickets are \$15.

He is pairing up with Steve 'Guitar' Gilles (Gil-berg) for 27 shows across the country in little more than a month.

This is the second time the duo have toured New Zealand together, the first

in 2016, having met briefly almost 30 years ago. It will be their first time playing in Whanganui together.

Greg is reportedly going back to his roots with an up close and personal acoustic journey.

He brings with him his latest CD titled "Brown-eyed Handsome Man", released in March 2019.

Greg pays his dues to the originals and forefathers of the Blues from deep down South, channelling the spirit into his own material and style.

You'll hear warm embraces with Sister Soul and a tip of the hat to Brother Funk.

His sidekick, Steve 'Guitar' Gilles, will be playing acoustic and resonator steel guitar, while wailing on the Blues Harp, also known as the 'Mississippi saxophone'.

Greg was born in Portsmouth, Virginia (USA). While growing up he was, and still is, heavily influenced by artists such as James Brown, Wilson Pickett, Robert Johnson, Howlin' Wolf, Leadbelly

and many others.

These influences have helped Greg to develop his own unique style, based on Blues and taking in Soul and Funk elements.

Based in Germany he regularly performs across Europe and has been touring as far afield as Israel.

Greg is also an accomplished songwriter and has produced several CDs.

"When I sing I want you to feel my hurt, my pain, my happiness and my sadness. I want to ask



Everyone welcome at Club Metro's restaurant

You don't need to be a member at Club Metro to enjoy their tasty, good value meals. Head Chef, Darlene Hall says, "We are becoming a lot busier especially from walk-ins. Word of mouth feedback is encouraging non-members to come in either for lunch or for dinner." (You do have to be a member of Club Metro or an affiliated club to drink alcohol, however).

They have an extensive menu as well as cabinet food, covering starters, entrees, mains and desserts as well as their blackboard specials. You can mix and match - have a garlic bread starter and a shrimp cocktail entrée and/or a main and select one of their appealing desserts.

Darlene says their burgers, especially the Southern Cluck complete with their own seasoning, are especially popular. The salads include Asian beef or chicken. "The most popular desert," Darlene says, "would be the roulade." (Like a Swiss roll).

The prices are very reasonable. The desserts by themselves are only \$5. With cream and ice cream they are still only \$8. On Saturdays they have an offer of buy one meal at normal price and a second meal will be 50% off. A main dish to consider is their lamb shanks, a full meal



Darlene in the main restaurant

at \$25.50. They also have a kids menu.

Darlene advises, "The restaurant can host 130 in a range of rooms as well as another downstairs for buffet meals, another 70." She adds, "We had 40 school hockey players last Friday with most of them wanting burgers, as well as our normal Friday customers."

Opening times are for lunch - 11.30 to 2pm, Tuesday to Saturday and for dinner - 5.30pm to 8pm although Darlene says, "If there are customers there we will open longer." On the third Monday of the month they have a 'Seniors lunch' which is very popular. Another innovation is their frozen meals of different types of roast. They cost \$8 if you are a member, \$10 if not and "they are a good portion size."

If you are thinking about a Christmas function at Club Metro, book now as they are getting full, especially if you want a separate room.

Delicious North Indian Takeaway

OPEN 7 DAYS
Monday to Saturday, 9am - 9pm
Sunday, 4pm - 9pm

A GRADE 51F Abbot Street, Gonville Shopping Centre, Wanganui
Phone orders 06 344 7838

BREAKERS
Cafe and Bar

Childrens meals from \$7
Birthday Party Specialists

THE GRAND HOTEL
Cnr Guyton & St Hill St, Wanganui
Ph 0800 The Grand, (06) 345 0955

CLUB metro 13 Ridgway Street, Wanganui
349 0149
RESTAURANT | BAR | GAMING

Lunch 11.30am - 2pm
Dinner 5.30pm - 8pm
TUESDAY - SATURDAY

AMALGAMATION OF WANGANUI
RSA + **Wanganui Economic Development Club**
Members and Bona fide Guests Welcome

Located in the Wanganui i-SITE building
mud ducks. 31 Taupo Quay. Ph 06 348 7626

NEW MENU OUT NOW!
SUNDAY - WEDNESDAY, 8.30am - 5pm
THURSDAY - SATURDAY, 8.30am - 8pm

www.mudducks.co.nz Email: info@mudducks.co.nz

Talking rubbish - report on the Science Forum

NZ play gives an insight on what it is like to live with Dementia



A dead albatross chick on Midway Island in the Pacific showing the plastic rubbish which it ingested causing its death

Ben Knight is an oceanaholic. As a job he works with the charitable trust, "Sustainable Coastlines" finding ways to get plastic pollution off beaches and out of the sea. When the organisation was set up in 2009 it soon became obvious that working toward cleaning up the sea also involved looking at the waterways that feed the sea. Outside working hours Ben immerses himself in the ocean as often as possible as a compulsive sub-aqua diver. His work mixes the aesthetic with the scientific and mathematical with a hint of spiritual thrown in. His organisation appreciates the uplifting beauty of our coasts and waterways and works on developing practical approaches to getting rid of the litter.

Jacques Cousteau's statement "People will protect what they love" provides the basis of the philosophy of Sustainable Coastlines. This means that a large part of their work is aimed to get people (citizen scientists) engaged with the work of monitoring pollution, tree planting and other forms of remedial work.

Ben showed slides of beaches covered with plastic litter and asked the question of how it got there. The problem is brought home by lifting

the lid on a stormwater drain to find it brimming with plastic rubbish. The drain shown was in Auckland but the story would be much the same in the drains around our fair city of Whanganui and across the country. The next rain-shower washes all of this into the river and thence to the sea which dumps some of it on the beaches. That which is not dumped on beaches circulates in the oceans where it is ingested by fish and sea birds. The non-biodegradable plastic sticks in the animal's digestive tract preventing normal nutrition and killing the animal. Unfortunately the trade winds that drive floating plastic into giant eddies or gyres in the oceans also drive huge amounts of fish food into the same areas. This concentration of food attracts marine animals to areas where the plastic is also concentrated thus amplifying the numbers of creatures lost to the pollution. According to UNESCO at least 1 million seabirds and 100,000 marine mammals are killed by plastic pollution per year.

OK we can ask and plead that people do not drop litter (and especially plastic litter) but Sustainable Coastlines goes the next step back in the non-food chain and finds the sources of the plastic by organising rigorous

surveys of the litter on beaches and in waterways. This data must be sufficiently robust to be used as a basis for local and national policy development. To ensure this level of reliability, Sustainable Coastlines works with Statistics New Zealand and the Department of Conservation to develop data gathering methods which meet the levels needed for official government reporting. This interaction is further encouraged by training teachers so that they can work with their students on finding this data. Sustainable Coastlines is also working to develop ways of working with people or companies found to be sources of plastic pollution. The aim is that, as near as is possible all, parties should come out of the process feeling they have made things better.

This is a great move towards citizen scientists generating robust data that is used by government departments to drive better policy decisions. This is coming full circle on Jacques Cousteau's vision. The interaction with the environment involved in clean-ups and data collection increases the love of the environment and encourages protection.

The Keys Are in the Margarine is a visceral theatrical examination of the impact dementia has on sufferers and their loved ones with a uniquely realistic composition format.

'The Keys in the Margarine' will be staged at the Royal Whanganui Opera House on Sunday, 20 October at 7.30pm. A unique form of stagecraft, the play has been created from interviews with people with direct experience of the disease - caregivers, family members, doctors and support workers.

In performance, actors re-present the edited testimony from those interviews. With the audio playing in their ears, they relay the original words and how those words are spoken - every vocal inflection, intonation and hesitation, every physical gesture and facial expression.

Their stories communicate the all-encompassing effect dementia has on the lives of people living with the disease and the lives of everyone around them.

"The Keys in the Margarine interweaves hilarity with heartbreak to poignant effect, while providing deep insights on what it means to be human. 'Verbatim' or 'documentary' theatre is real, mesmerising, and truthful. The play has been described as profound and enlightening."

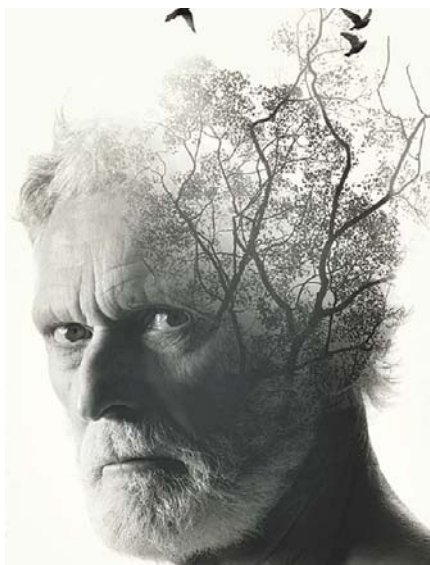
Today, more than 60,000 New Zealanders live with Alzheimer's disease or a related dementia - a number that is expected to triple by 2050. It is a condition none of us can ignore. The play is the result of collaboration between Arts on Tour New Zealand and Brain Research New Zealand and is directed by Cindy Diver.

Arts On Tour NZ (AOTNZ) is a trust which organises tours of outstanding New Zealand performers to rural and smaller centres in New Zealand. Funded in part by Creative New Zealand,

among other supporters, AOTNZ liaises with local arts councils, repertory theatres and community groups to bring the best of musical and theatrical talent to country districts.

Brain Research New Zealand - Rangahau Roro Aotearoa is a national Centre of Research Excellence undertaking ground-breaking research on the ageing brain and ageing-related neurological disorders. They bring together New Zealand's leading neuroscientists and clinicians and work with the community to combat disorders like stroke, Alzheimer's and Parkinson's disease.

Book your ticket for the show at the Royal Whanganui Opera House today.



Pigeon racing results

The St Johns Club Wanganui Pigeon Racing Adjunct held its fourth race in the 2019 Old Bird Season with a race from Hamilton. The race attracted 123 pigeons from 8 flyers. The winner from the loft of Jim Pullins covered the 245km in 3hr 8min 16sec, with an average speed of 1303.37 meters per minute or 78kph. The pigeons experienced

mixed weather conditions on their flights to Whanganui.

Results were: Jim Pullins 3hr 8min 16sec; Don Lacy 3hr 9min 3sec; Dave Lacy 3hr 10min 17sec; Shane Gudopp 3hr 13min 10sec; Geoff Underwood 3hr 16min 39sec; Klem Ryder 3hr 19min 57sec; B and A Fairweather 3h 20min 56sec; Robert Barnes 3hr 25min 32sec.

Water Softeners

Microlene Kinetico Water Softener - Non Electric

This is a non electric water softener that uses kinetic energy of moving water to power its system instead of electricity.

Ideal for reducing Calcium, Magnesium, Manganese and Iron from water sources to supply soft water to:

- Make cleaning easier
- Make clothes and Hair softer
- Reduce scale in pipes and appliances



MACHINERY MAINTENANCE LTD

Ph 348 9239 99 RIDGWAY ST WANGANUI

"Let us relate to each other"

Vote Vijeshwar Prasad for Council

Interested in your well being

Authorised by V. Prasad, 136 Anzac Parade, Whanganui



RRP \$1100
NOW ONLY \$999



RRP \$800
NOW ONLY \$699

Furniture Done
Locally Owned & operated

OPEN 7 DAYS
151 St Hill Street Wanganui
Phone 06 345 6084

Find us on Facebook
All major credit cards accepted. Finance available.
Layby GE Money

WANGANUI BEDROOM Specialists

Artwork by Jasmine Couper

hospice
whanganui



Light Show

family fun for everyone

14th OCTOBER
6.30pm COOK GARDENS

Checkout hospicewhanganui.org.nz

Proud to support
Hospice Whanganui

ANDERSONS

Menswear

65 Victoria Avenue, Wanganui
Ph 345 5220

Bringing music and lights together with magical Light Show this Monday

Hospice Whanganui is getting ready to launch a laser light extravaganza on Monday, 14 October at Cooks Gardens (1st day back at school after the holidays).

The event will bring the magic of lights and music together, but not before an evening filled with other entertainment. Starting with the beat of the Japanese Drum Team as you arrive, their energetic display will get you in the mood for the following performances by the Whanganui High School bands and then the grand finale Laser Light extravaganza put together by Flying Pictures.

Flying Pictures is a New Zealand company who have created spectacular shows throughout New Zealand, Australia and beyond since

1986. Come along and experience the magic, bring a picnic dinner (although food/coffee trucks will be available on the night).

This fund raising event for Hospice Whanganui helps continue to provide specialist care at no cost to members of our community with a life-limiting illness. We also provide support for the carers and family of those affected. Hospice Whanganui has to raise around \$1.5 million every year to keep our service operating so events like these play an important role in

supporting the shortfall of funds provided by our Government.

Tickets are available from the Opera House and/or gate sales. Please be aware that there may be a queue for gate sales.

Click on the 'Buy Tickets Now' button and go straight to the ticketing site.

Adult: \$10; Child: \$5 (5-12 years); Child: Free (under 5 years); Family: \$30 (2 adults & 3 children).

Note: Tickets purchased at the Opera House will incur a small administration fee.

* Entry is through the

Cooks Street entrance only. There will be an express entry for those who have pre-purchased tickets.

* Cooks Gardens has a non-smoking/vaping, non-alcohol and no glass policy.

* Please refrain from smoking/vaping while in the grounds.

* Bags will be checked on entry.

Billboard competition winner

Jasmine Couper has created our fabulous billboard artwork. Her original artwork has been incorporated into our billboard resulting in an eye catching, fun

design.

Not only will Jasmine see her art on display around Whanganui, but she will also receive free tickets for herself and family to the Laser Light event at Cooks Gardens.

Display Associates have generously provided the billboards that you will see around town as part of their contribution to this fund raising event.

Thank you everyone for assisting us to get our event profile up and running.

Please support this family friendly community event.

Driving Miss Daisy is NZ's number 1 friendly and reliable companion driving service.

Driving Miss Daisy can help with:

- School pick up/drop off
- Clients with special needs
- Appointments while rehabilitating
- Any outing you may choose!
- Wheelchair Accessibility

ACC registered vendor.

Total Mobility Cards accepted.

Bookings are essential. Call Clive today.

Ph: (06) 347 9100

Mob: 021 503 313

Email: whanganui@drivingmissdaisy.co.nz



Driving
Miss Daisy

Jackson's
Flooring Design

Service and Excellence You Can Trust!

Pleased to support Hospice Whanganui

Corner of Wilson & Ridgway Streets

P 06 345 9059 • whanganui@flooringdesign.co.nz



ZERO COMPROMISES

- Demolition consent applications
- Service location and disconnections
- Traffic management
- Asbestos & hazardous material sampling & removal
- Technical planning
- Methodology statements
- Structural engineering advice
- Concrete cutting
- Partial demolition
- Industrial demolition
- Commercial demolition
- Residential demolition

We specialise in large industrial demolition and undertake projects of all sizes including internal and partial demolition.

Our work is always undertaken with minimal disruption to neighbouring properties and business activities.

We specialise in asbestos removal and are fully supervised.

For all quotes contact David Jurgens
Email: david@jurgensdemolition.co.nz

0274 437 000



Kiri SPANNZ
NEW GENERATION BUILDINGS

136 Guyton Street, Wanganui

Bruce 344 5160
Alex 281 3438

in association with
MORRIS & SON BUILDERS - WANGANUI

We are proud to support
Hospice Whanganui

Artwork by Vasmine Couper

hospice
whanganui



Light Show

family fun for everyone

14th OCTOBER
6.30pm COOK GARDENS

Checkout hospicewhanganui.org.nz



Hospice Whanganui cares for anyone with a life-limiting condition

• Hospice Care is free of charge for patients and their families

We are able to keep the care and services we provide free of charge through the generous gifts from the people in our community who give so freely. Dona-

tions of money, time or support are all gifts we value and appreciate as it is these gifts that allow us to do what we do, without any cost to the people in our care.

• Hospice is not just a Building; It is a Philosophy of Care



Hospice cares for the needs of our patients and their family/whanau, whether those needs are physical, emotional, social, cultural or spiritual. As part of the Hospice programme care is to offer support in whatever way we can. This enables our peoples' end of life journeys to be comfortable and peaceful. We are far more than just a building.

• Hospice cares for anyone with a life-limiting condition

Many people believe that Hospice only cares

for people who have cancer. In fact we provide our specialised care for anyone who has a life-limiting illness. Whether young, middle-aged or older, whether men or women, around 30 in every 100 patients we care for have an illness other than cancer. Some of our patients have heart or kidney failure; some have illnesses such as Motor Neurone Disease, or respiratory conditions. It's important to remember that the palliative care that Hospice provides, is for anyone who needs it.

• Hospice cares for people in any place they call home

Hospice Whanganui has five inpatient beds in its facility, but a number of our patients are never admitted here. If they are, it's often just for a few days for symptom or pain management. Once these are controlled they return to wherever they call home. Supporting patients through their journey which may include end of life care, is mainly provided in whatever place they call their home.

• Hospice helps people live every moment, in whatever way is important to them

Hospice provides care for people at the end of their life, but we are very much about maximising the quality of that life. Our care includes supporting people to be well enough, whatever their life journey is, to enjoy the things that are important to them.

Those things are different for everyone and Hospice care acknowledges, embraces and supports that.

Call in and see us today!



Proudly supporting
**HOSPICE
WHANGANUI**

- Security Doors
- Fly Screens (Windows & Doors)

Andrew Alexander
Director

**OJ Andrews
Engineering**

177 Mosston Road
Ph 344 2710 or 027 471 6445
ojandrews@xtra.co.nz

**WAT'S ON
building**

For quality and care

We are very proud
to support

**HOSPICE
WHANGANUI**



2 Pehi Street, Wanganui 4541

Telephone: **06 343 2439**

mikewatsonbuilders@xtra.co.nz

www.watsonbuilding.co.nz

**LOADERS
WANGANUI**

www.loaders.co.nz

Proud to support
Hospice Whanganui

- Drainage • Roading
- Earthworks
- Traffic Management
- Hydro Excavation
- Machinery Hire & Transport

06 348 9034 info@loaders.co.nz



CIVIL ENGINEERING • EARTHMOVING CONTRACTORS



ATL allan tong ltd

Since 1945

Asbestos Management Survey • Asbestos Management Plan
Asbestos Demolition Survey

Phone (06) 345 2743

Email: allan.tong@xtra.co.nz



GRAHAM BULL

**CERTIFYING PLUMBER
& GAS FITTER,
Reg. DRAIN LAYER**

Phone (06) 347 8705 Fax (06) 347 8706

Graham 0274 434 065 Keith 021 605 296

Jeffrey 027 481 8090 Kirk 021 622 460

Proud to support Hospice Whanganui

111 Glasgow Street, Wanganui
PO Box 7349, Wanganui 4541
E: gbplumbing@vodafone.co.nz



Deborah Wai Kapohe returns to sing for the Sarjeant along with Donald Trott and Ingrid Culliford

On Sunday, October 13, Deborah Wai Kapohe will come 'home' to Whanganui, reunite with fellow musicians Donald Trott and Ingrid Culliford to present an hour of music as part of the 'Musicians for the Sarjeant' series. They will be accompanied by talented young pianist, Avinda Wu.

The series was initiated by Debbie back in 2013 and this will be the ninth time she has performed for it. There have been 43 concerts so far. She is coming up from Christchurch where she is studying to update her law degree, especially for the concert, as she had a weekend free.

She told the RCP that, "I will be singing the same songs that I have been practising for a special concert in South Africa, at which I will be accompanied by a choir from a township close to Stellenbosch,

not far away from Cape Town where I now live." The songs will focus on easy listening items.

Debbie adds, "The concert will also help me get back into form for performing 'The Messiah' at the Christchurch Town Hall in December. This will be the first year since the earthquake that The Messiah will be performed in the CHCH town hall. It will be a very emotional time for all and I will be the soprano soloist."

She is very supportive of the Singers for the Sarjeant and encourages local music teachers to encourage their students to be involved and "to push themselves to perform."

Donald admits to having his arm twisted to perform. His last public singing was at the 'Burns Night' in 2018. He is planning on singing an aria from the Marriage of Figaro, among other songs. He did say, "Ex-

pect a bit of humour."

Debbie was particularly keen to have Donald involved saying that he "has done so much for my singing, has always been encouraging. It is lonely work, especially for a soloist. Donald fills this void. It really means a lot that he is there."

Ingrid will accompany Debbie on the piano and flute for some songs as well as doing a solo flute piece. Advina will also accompany and play two solo piano pieces. Debbie says, "Ingrid is such an incredible musician and every time I perform with her she lifts my performance."

Debbie, now based in South Africa, says "I am very positive about the country. People are returning. Big investments are being made. It is on the edge ready to take off and boom. It is also an absolutely beautiful country. I have a lot of faith in it."

The concert is at the



Donald Trott and Ingrid practising in Debbie's absence

Frank Bar & Eatery, 98 Victoria Ave. Tickets cost \$20 or \$15 for Gallery Friends and Stars. You can purchase from the Sarjeant or by phoning 349 0506. There will be a cash bar from 4 to 4.30pm and during the interval. The programme will be for one hour.

Copyright:

River City Press produces and/or publishes advertisements strictly on the basis that River City Press is entitled to and owns the copyright in the advertisement so far as the copyright relates to publication or reproduction for publication in any newspaper, magazine or similar periodical or to broadcasting of the advertisement.


Open day at Croquet Club



Croquet is an ideal game for people wanting outdoor exercise, fitness, flexibility, friendship and fun. The only equipment required is a mallet and the club has spare mallets for new members to use. The only dress requirement is flat-soled shoes. If you are interested in checking out either Croquet or Golf Croquet, there is an Open Day for prospective new players on Sunday, 13 October 2019 at 1.00pm. The Club is at 11 Parsons Street (next to Victoria Park).

Both games are played by all generations, on flat lawns and there is plenty of exercise through walking. It is a sport where men and women compete on equal terms, as a handicap system is used, so that players of differing abilities can play against each other.

Club days are Wednesday, Thursday and Saturday. For more information, contact Cherie (06) 345 5801 or 027 3883780.



VOTE

Charlie Anderson

for DISTRICT COUNCIL ✓
and
DISTRICT HEALTH BOARD 1

INDEPENDENT

Authorised by: Charlie Anderson, 135 Union Line, Wanganui

QUALITY USED VEHICLES

 <p>07 MAZDA MPV 2.3L, auto, alloys, tints, very tidy, 8 seater.</p> <p>\$9,995</p>	 <p>12 TOYOTA AQUA HYBRID 1.5L, auto, Hybrid, tints, spoiler, tidy.</p> <p>\$11,995</p>	 <p>08 TOYOTA VOXY 2.0L, auto, tints, 8 seater, great family wagon.</p> <p>\$9,995</p>
 <p>08 HONDA ACCORD EURO 2.4L, auto, alloys, body kit, towbar, very tidy.</p> <p>\$9,995</p>	 <p>05 TOYOTA CAMRY ALTISE 2.4L, manual, drives great! Was \$4,995</p> <p>\$3,995</p>	 <p>10 TOYOTA COROLLA 1.8L, auto, very tidy vehicle.</p> <p>Was \$9,995 \$6,995</p>
 <p>06 NISSAN CUBE 1.5L, auto, tints, very unique looking vehicle, awesome black alloys.</p> <p>\$6,995</p>	 <p>07 SUBARU LEGACY OUTBACK 3.0L, auto, tints, alloys, very tidy car.</p> <p>\$8,995</p>	 <p>10 SUZUKI SWIFT 1.5L, auto, alloys, NZ new, spoiler.</p> <p>\$9,995</p>



Ph 06 281 3298 • 31 Heads Road, Wanganui
Uwynn 027 444 0507

*** FINANCE AVAILABLE**
* Conditions apply - Vehicles on special are not eligible for the \$2000 Minimum Trade Deal.

GET
READY
TO

Shake
Out



1.30pm
17 October
2019

Get a rattle on and sign up for ShakeOut

ShakeOut is the annual New Zealand-wide earthquake drill and tsunami hikoi (evacuation). This year's event takes place on Thursday, 17 October at 1.30pm and is intended to remind and educate

people about the right action to take in the event of an earthquake and tsunami.

Whanganui District Council's Emergency Management team will be out and about at schools around Whan-

ganui during the week of ShakeOut to get the "Drop, Cover and Hold" and "Long or Strong, Get Gone" earthquake and tsunami messages across to tamariki and beyond. The Rapid Relief Team charitable organisation will also provide catering support during the drills.

Council Emergency Management Officer, Anthony Edwards says, "ShakeOut is a very

effective way to educate our tamariki and people of all ages, about the need to be prepared in the event of a major earthquake and coastal inundation."

The schools being visited by the Council's Emergency Management team during ShakeOut week are:

- Putiki area – Monday, 14 October 2019 at 11.00am – evacuation muster point is at the top

of Putiki Hill

Te Kura Kaupapa Māori o Te Atihauunui-A-Paparangi, Putiki Kindergarten, Putiki Wharanui Te Kohanga Reo – up to 100 children and staff.

- Castlecliff – Tuesday, 15 October 2019 at 11.00am – evacuation muster point is to Lee Street

Te Kura Kaupapa Māori o Tupoho, Castlecliff School, Marie

McFarland Kindergarten – up to 450 children and staff.

- Castlecliff / Gonville – Wednesday, 16 October 2019 at 11.00am – evacuation muster point is at the end of Rogers Street

Te Kura o Kokohuia, Barsanti Kindergarten, Te Heti Kura Te Kohanga Reo – up to 260 children and staff.

The Council's Emergency Management

team urges all Whanganui schools, households, businesses and other organisations to sign-up to this year's ShakeOut so that they have a plan in place to protect and evacuate themselves in the event of an earthquake and tsunami.

To sign-up to ShakeOut 2019 and for more information, please visit: www.shakeout.govt.nz

Take five minutes to get your family prepared

Getting your household prepared for a disaster could take just five minutes, Minister of Civil Defence Hon Kris Faafoi says, and they could be the best five minutes you've ever spent.

"We all have people and things that are important to us – our family, our friends, our pets, our community and our homes. I'm appealing to everyone to think about how we protect those things the best we can – by ensuring we are prepared if a disaster should strike."

Mr Faafoi says he was concerned that many Kiwis are putting preparedness in the too hard basket, after reading a survey that shows a decline in the number of New Zealand residents who have taken steps to get prepared for a disaster. The 2018 Disaster Preparedness Survey was undertaken by Colmar Brunton on behalf of the Ministry of Civil Defence & Emergency Management (MCDEM). It shows that 50 percent of New Zealanders took steps to get prepared in the last 12 months, down from 57 percent in 2017.

"Following the Canterbury sequence of earthquakes, we saw a spike in people getting prepared, then it dwindled over time. We're seeing the same pattern emerge following the Kaikoura earthquake which suggests complacency is creeping in again."

Mr Faafoi said the message to Kiwis is simple: "Don't wait for a big emergency to get prepared – do it now. It's easier than you think."

"Getting prepared doesn't need to be a difficult or costly task. The most important thing you can do is have a five minute conversation with your family, whanau or flatmates, and make a plan. Ask a few simple questions – what do we need, where will we go? Think about who needs our help or who could help us?"

Mr Faafoi says radio remains comfortably the 'go to' source of information during and immediately after an emergency, followed by the Civil Defence website and television.

Sometimes it takes more than a band aid.

Would you know what to do if someone is injured?

First Aid Training

Whanganui: Wednesday 23rd Oct or Friday 29th Nov



Oct SPECIAL

Teachers First Aid Special - \$20 off per person or 10% off New Customers

Freephone: 0508 487 246

LINKS

We train, you gain!



training@links-ltd.co.nz
www.links-ltd.co.nz

WHEN AN EARTHQUAKE HAPPENS



DROP down immediately to your hands and knees. This protects you from falling and makes yourself a smaller target for falling and flying objects. Do not run outside or stand in a doorway.



COVER your head and neck with your arms and hands to protect vital organs. If possible, crawl under a sturdy table or desk for greater protection. If there is no shelter near you, crawl to an inside corner of the room.



HOLD on to your position or shelter until the shaking stops. If the shaking shifts your shelter around, move with it.

All of New Zealand is at risk of earthquakes. Knowing the right immediate action to take can prevent injury and save lives.

Make a plan today. Know where to go, and find out who can help you and who might need your help. Your local Civil Defence Emergency Management Group has information for your region. Visit www.civildefence.govt.nz to find out more.



WWW.CIVILDEFENCE.GOV.TZ



MIDWEST FERRIES Ltd
FREEPHONE 0800 15 10 40

**UP TO D
FOR**

Fully supportive of
this development at the
Whanganui Port

TestLab
WANGANUI

CIVIL ENGINEERING MATERIALS
TESTING SPECIALISTS

83 Putiki Drive, Wanganui
Ph 06 348 4199

Proud to support the
**Commercial Port
Development**

Plumber Dan
Registered Plumber

Plumbing, Gasfitting & Drainlaying
Daniel Goldsworthy 021 635 517

✓ **Vote for
Rodger
Anderson**

Candidate for
Wanganui City
Councillor



I support **MIDWEST FERRIES Ltd**
plans for the development of the
Whanganui port.

This is a vastly underutilized asset.

Proudly supporting
the new port
development.

51 Taupo Quay Whanganui 4500
P 06 345 7714

pb.co.nz
Property Brokers Ltd Licensed REAA 2008

**Property
Brokers**

Far reaching Whanganui Port Ec

Neville Johnson and his consultants have spent over nine years investigating and developing the Midwest Ferries Proposal to set up a daily alternative inter-island sea transport route between Whanganui and the South Island. It will also be an alternative inter-island connection should Wellington be taken out as predicted. He says, "The main aim has been to maximise the ongoing redevelopment and commercial use of the Whanganui Port to the benefit of residents of Whanganui and Motueka but also for the country as a whole, blended in with substantial recreational and cultural areas."

The benefits to Whanganui, especially to the Port are clear. Our port has been neglected over the last three decades, never having sufficient users to pay for the necessary dredging, repairs and maintenance as well as Port operating costs. The time has come for the neglect of our greatest asset to stop and to urgently promote full Port Development. Likewise, the benefits for the rest of the country are clear. The impact of the Kaikoura earthquake to the top of the South Island and to Wellington has made the reason for an alternative inter-island transport connection all the more urgent. This alternative link would be one of national significance, as Wellington continues to get more and more earthquake warnings and



resulting port damage. There would also be huge economic benefits in terms of savings in fuel and travel times for transport operators as a route through Whanganui from the North to Motueka through the Lewis Pass to Christchurch, which would lead to an average savings of four hours of road transport time between Christchurch and Auckland, as well as helping to decongest State Highway 1, from Taupiri in the North to Waipara in the South. There would also be a huge boost to West Coast tourism encouraging tourists to explore that side of the island rather than limiting themselves to Auckland/Rotorua/Queenstown

and Christchurch. Local Whanganui attractions such as the "Waimarie" and the Rewi Alley connection, appeal to Chinese tourists and the completion of Mother Susan Aubert of Jerusalem being made a saint, appealing to millions of Catholic visitors worldwide, who would benefit with improved river access and development. Reservations and ongoing myths in Whanganui about the proposal to setting up such a Modern Port and Ferry Service, can easily be answered as follows:

- Dredging the Whanganui River would be too costly. This was the case back in the 1980s/90s but no longer, thanks to modern technology. As Neville points out, "We

are aware of one modern dredging system that could handle the annual silt volume from the river in less than three days at a cost per cubic metre of approximately one eighth of the cost in 1990."

- Dredging is no longer a problem.

- There is not enough space in the river for a ferry to turn around. Modern ferries are able to turn in their own length and the proposal provides a 260m diameter turning basin, more than enough for a ferry or a 180m log export vessel.

- The Midwest Ferries proposals has been approved by Marico Ltd, worldwide marine engineers.

- The District Council's

proposals show large ongoing costs with no related income. The Mid West Ferry Proposal will carry out all initial and ongoing dredging as well as rebuilding the wharves as required. They will be able to offset these Port Development Costs by not paying berthage until their debt is paid and the result will be a modern operational Port for everybody to use.

- Returns/Profit will go to the Port owners.
- Will The Ferry Service be profitable? Midwest Ferries has planned for four crossings a day, initially with one vessel, increasing to two as demand increases. With a projected turnover of \$80 million annually and potential for 300



Financial Progress Ltd

IS YOUR MORTGAGE A LEMON?

Are you being squeezed out of existence by your BANK?

Rapid Repay Mortgage Specialists!



Proudly supporting the long overdue serious Port Commercial Development!

Please contact Neville to assess your mortgage
14 Rawhiti Place, Whanganui
Phone 06 345 0988, Mobile 021 447 935, Email info@njfs.co.nz



Looking forward
new port fa

- Suppliers of New & U
- Full mechanical
- Windscreen and glass

**Phone 06 34
Mobile 0274**

Email: sales@autoparts

**109 Somme Parade
Wanganui 4500, N**

DATE SUGGESTED **NEW** PORT PROPOSAL FOR DISCUSSION FROM MIDWEST FERRIES

Economic Development Plans



new jobs, the ferry project is showing a very strong profitable budget. Neville Johnson has a 30 year background in the transport industry and has already confirmed a huge demand from trucking companies who can see the savings that they will achieve. There will be a savings of 106,000 less truck hours on the road from the first 12 average size operators.

- 450,000 Fewer truck hours on the road saved per year, per ferry.
- The moles are too fragile. Midwest Ferries Project is to sheet pile the inside of both moles on the inside for permanent protection

so that no mole material can fall into the channel. Each mole would have a suggested 100metre wide external earth bank, people friendly, recreational area on the outside completing a 100% Mole Protection Plan. (See artist's illustration).

- This will result in no maintenance work or costs in the future.

There are also now 23 separate commercial projects or entities working with MWF showing interest to become users of the Whanganui Port and Ferry Project. Potentially huge spin-offs from the revitalisation of Whanganui's Port. These include:

- Log treatment, debark-

ing and export

- Small boat marina
- Power plant using excess log bark and landfill rubbish for fuel
- Providoring – supplying ferries and other boats
- Fishing ventures – now three
- Tourist projects such as the extension of the tram, development of river attractions and the possible building of a four star hotel
- New administration building at the port.

The SH4 rebuild is vital to Whanganui economy and the ferry project. It is our Northern doorway in and out of the city. These developments would lead to income

from port users of over \$200million annually, but would not happen if Midwest is not the catalyst to obtain maximum physical development and use of the port facility.

Other regional New Zealand ports are proving to be successful such as:

- Napier- Raised an additional \$200 million Share Float in three weeks
- Eastland Port (Gisborne) - In 2017 made a payment of \$9 million into the council from Eastland Group Ltd, the port owning company
- South Port (Bluff)- \$9 million profit last year
- Auckland - according to media, Auckland

District Council receives a \$50 million payment annually from the Port Company

- North Port (Whangarei), Tauranga, Nelson, Lyttelton, Timaru, Port Chalmers (Dunedin) and Port Taranaki are all showing ongoing strong economic growth and strong profit performance.

There is this chance for Whanganui to also be a successful port. For more information about this proposal and the other commercial projects, either as a group or individually, please contact Neville Johnson on 345 0988 or email him at info@njfs.co.nz

PACIFIC HELMETS

PROTECTING PEOPLE WITH THE **BEST** SAFETY GEAR.

FROM **WHANGANUI** TO THE WORLD.

WWW.PACIFICHELMETS.COM
PHONE (06) 344 5019
SALES@PACIFICHELMETS.COM

VOTE RAY ✓

BRIGHTWELL

FOR COUNCIL

Authorised by Ray Brightwell
28c Great North Road, Whanganui

Whanganui District Councillor

Charlie Anderson wholeheartedly supports the Whanganui Ferry & Port development.

Charlie Anderson

parts 2000

partsWorld

Right Service, Right Price

Forward to our port facility.

New & Used Auto Parts

Mechanical repairs and glass replacement

06 343 7644
0274 588 006
autoparts2000.co.nz

Parade, Aramoho, 500, New Zealand

ZERO COMPROMISES

- Demolition consent applications
- Service location and disconnections
- Traffic management
- Asbestos & hazardous material sampling & removal
- Technical planning
- Methodology statements
- Structural engineering advice
- Concrete cutting
- Partial demolition
- Industrial demolition
- Commercial demolition
- Residential demolition

We specialise in large industrial demolition and undertake projects of all sizes including internal and partial demolition.

Our work is always undertaken with minimal disruption to neighbouring properties and business activities. We specialise in asbestos removal and are fully supervised.

For all quotes contact David Jurgens Email: david@jurgensdemolition.co.nz

0274 437 000

Proudly supporting Wanganui and the Port Development

Palmer's Plumbing & Heating Ltd

WANGANUI

27 Heads Road, Wanganui
Ph. (06) 345 5891, A/hrs 0275 724 433
Monday - Friday, 8am-5pm

Proudly supporting the port development.

CASTLECLIFF

FOUR SQUARE

All you need

2 Bryce Street, Wanganui. Ph 06 344 4530

TOYOTA COROLLA SPECIAL

* Minimum Trade does not apply on these vehicles

2015 Toyota Corolla GX
ONLY 4 REMAINING!

NZ New, reverse camera, Bluetooth, cruise control

\$13,240

FINANCIAL
SERVICES



PRIUS SPECIALS

**1 YEAR WARRANTY
& 5 YEAR BATTERY
COVER**

**2013
TOYOTA PRIUS**

1.8L, auto, HYBRID,
awesome alloys.



Was
\$17,990 **NOW \$15,750**

**1 YEAR WARRANTY
& 5 YEAR BATTERY
COVER**

**2012
TOYOTA PRIUS**

1.8L, auto, HYBRID,
only 74,000kms,
tidy.



Was
\$17,990 **NOW \$16,250**

**2013
TOYOTA PRIUS**

1.8L, auto, HYBRID,
awesome black
alloys.



\$16,990

2009 TOYOTA IQ

1.0L, auto, hatch,
economical
vehicle.



Was
\$11,990 **NOW \$9,490**

2006 TOYOTA CALDINA ZT

2.0L, auto, tints,
alloys.



Was
\$11,990 **NOW \$9,990**

2010 SUZUKI SWIFT GLX

1.5L, manual, only
25,000kms, great
colour!



\$11,990

2016 TOYOTA COROLLA GLX

Reverse camera,
5 to choose
from.



Was
\$18,990 **NOW \$17,495**

2018 TOYOTA YARIS SX

1.5L, auto, only
10,500kms,
alloys.



Was
\$19,990 **NOW \$19,495**

2019 TOYOTA YARIS GX

1.3L, auto, our
demonstrator
model.



\$19,995

2015 TOYOTA COROLLA ZR

1.8L, auto, alloys,
tints, smart
looking.



Was
\$26,990 **NOW \$23,990**

2017 TOYOTA AURION AT-X

3.5L, auto, V6,
airbags, alloys,
parking sensors.



Was
\$27,990 **NOW \$25,990**

2018 TOYOTA RAV 4 GXL

2.0L, auto, petrol, FWD, only
33,000kms, tints, alloys,
lane departure,
adaptive cruise
control.



\$28,990

2017 TOYOTA RAV 4 GXL

2.5L, auto, petrol, AWD, tints,
alloys, foglights, reverse
camera.



\$29,990

2014 JEEP COMPASS ALTITUDE

2.0L, alloys, driving
lights, only
35,000kms.



\$19,990

2015 TOYOTA HIGHLANDER GX

3.5L, V6, auto, 7 seats.,
reverse camera, rear
air conditioning,
alloys.



**2 YEARS
FREE
SERVICING** **\$32,990** **3.9%
INTEREST***

2017 TOYOTA HIGHLANDER LTD

3.5L, auto, petrol, AWD,
alloys, tints, great
colour, stunning.



\$46,990

2015 TOYOTA HILUX

3.0L, 2WD, alloys, aftermarket
headlights,
tonneau cover.



\$24,990

2010 TOYOTA HILUX SR5

3.0L, auto, turbo
diesel, 4WD,
side rails,
tints.



Was
\$27,990 **NOW \$25,990**

2014 HOLDEN COLORADO LT

2.8L, auto, turbo diesel,
alloys, bullbars, 4WD
tuff deck.



\$28,990

2015 TOYOTA HILUX SR5

3.0L, auto, turbo
diesel, 4WD,
canopy.



\$35,990

2018 TOYOTA HILUX SR5

2.8L, manual, turbo,
diesel, 2WD, only
15,000kms.



Was
\$39,990 **NOW \$37,490**

2018 TOYOTA HILUX SR

2.8L, auto, turbo,
diesel, 4WD,
bluetooth.



\$47,500

2014 TOYOTA HIACE

2.0L, auto, petrol, tints, only
105,000kms.



\$21,990

2011 TOYOTA HIACE

2.7L, auto, NZ new, 11 seats, only
90,000kms.



\$28,990

2013 TOYOTA HIACE

3.0L, auto, turbo
diesel, 10 seat
minibus.



Was
\$34,990 **NOW \$29,990**

GUYTON STREET, WANGANUI

Phone 06 348 8850

www.wanganuitoyota.co.nz

Open: Monday - Friday 8am-5pm
Saturday 9am-3pm
Sunday by appointment

*After hours
contact...*

Wayne Brougham
027 326 7211

David Gibson
0274 759 650

Richard Nessling
0273 488 859

Todd Clark
0273 222 252



FINANCIAL
SERVICES



Jigsaw offering parenting courses to help your family thrive

Love your teenagers but feel challenged by them sometimes? Our teens are wonderful; zealous; edgy;

experimental. They can have great enthusiasm and passion. And, they can be very difficult. They can be

head strong, defiant, and know-it-all. Finding ways to communicate can be a huge challenge but reward-

ing when we get it right.

The White Water Years programme is a parent support and learning group for parents and carers of pre-teens and teens. This programme supports you to be the best parent you can be through:

- Understanding our teens and their development
- Respectful communication
- Managing challenging behaviours
- Exploring parental feelings, behaviours and expectations
- Building positive relationships in our whanau/families.

The White Water Years programme provides a safe and supportive space where parents and caregivers who are experiencing similar things, can gather together to explore and share strategies that can help to improve family relationships.

The programme has been developed locally by Jigsaw Whanganui. At Jigsaw we work with local families' strengths, resources and hopes to help build safe and nurturing environments for children and young people.

Here are some comments from past participants:

"This has been an amazing journey, we are all living now, not only for myself but our little whanau each day we wake up to enjoy the new day whatever it may bring".



"Thank you is not enough, is how I feel, all of the support and love that I have taken away from White Water Years has truly touched me, I have

never been one to open up about myself let alone my Whanau/Family. Family have become stronger in loving and caring for each other. Thank you White

Water Years xxx".

"There has been pleasant change in the atmosphere at home, we are communicating better. I feel more confident in my parenting skills."

"It's easier to find ways of doing things with the kids without yelling".
"It has been extremely helpful being reminded of what things were like for me as a teenager and pondering on how different – better I would like things to be for my teenager – and I can be the one making the positive change".

Sports Talk

with Mark Dawson

Ladies and gentlemen, Whanganui has a new world champion

And he has all the necessary attributes – he's young, fit, fast, good-looking, has about 900,000 Instagram followers and can talk the hind legs off a donkey.

You may not know the name Israel Adesanya and you may not know too much about his sport – mixed martial arts – but in the right circles this boy is hot to trot.

Nigeria-born, now Auckland-based, former Whanganui schoolboy, Adesanya won the UFC world middleweight championship in front of almost 60,000 fans in Melbourne at the weekend, knocking out Robert Whittaker in the second round.

For the uninitiated, UFC stands for Ultimate Fighting Championship, a Las Vegas business that has successfully propelled mixed martial arts into a showbizzy, money-spinning slice of highly athletic, highly

combative entertainment.

And for the equally uninitiated, mixed martial arts is what you get when you chuck boxing, wrestling, kick-boxing, Judo karate, kung-fu and all those other quasi-religious Oriental fighting styles into the back of a truck and let them scrap it out. Only the strong survive...

And those survivors then go head-to-head in an eight-sided cage with all the fanfare and hype we once associated with Muhammad Ali.

Israel started his career in the River City with Muay Thai kickboxing and was an immediate success. Moving into mixed martial arts, his championship triumph over Whittaker was his 18th straight win.

He has the classic ingredients of a great back story – subjected to racism and bullied at school, he found his fists were an effective way to shut up the bullies.

Of course, we may hesitate to hail a sportsman whose trade is inflicting physical damage on his opponents. You can get



Mark Dawson

hurt in most sports, but Adesanya's game has a particularly brutal edge.

Still, his proud mum has come to terms with it – and she's a nurse at Whanganui hospital.

And Israel has a pretty smart brain on his young shoulders, having invested his money in property and noting: "I'm not here for a long time; I'm here for a great time."

"After this, I might have my own production company and get into eSports or animation or voiceover acting."

But for now, his mantra is: "I fight like I'm broke".

AMERICA Nails

NAILS
EYEBROW MICROBLADING
WAXING & MORE SERVICES

**NEWEST PRODUCT
SNS DIPPING POWDER**

Contains Vitamin C & Calcium
Maintain Healthy Strong Nails
Lasts 3-4 weeks



DETOX PEDICURE

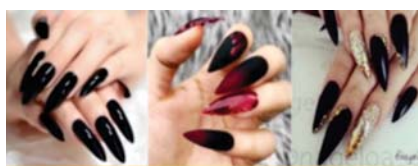
From the Dead Sea, the lowest point of the earth
26 minerals - Amazing for your health & skin - Paraben free
Safe - Allergy Tested - Cruelty Free - Doctor Recommended

SEACRET
MINERALS FROM THE DEAD SEA

136 Victoria Avenue. Monday - Saturday, 9am-6pm
Phone 06 347 2909

WANGANUI LUXURY NAILS

Come - Relax - Enjoy



Specials

- Acrylic Nails **\$50**
- Gel Polish **\$30**
- Spa Pedicure **\$35**
- SNS Nails **\$45**

Much more
in store

Walk-ins Welcome

73 Victoria Avenue, Wanganui.

Phone 06 345 6868



Find us on

Facebook

Wanganui Luxury Nails

Husqvarna products now in store!

including

- Ride-on mowers
- Outdoor power equipment
- Chainsaws & more!



Geoff Hume



Antony Gibbons

PARAGON

Motorcycles

72 WILSON STREET,
WANGANUI
PH 06 345 0001

Serving the Region Since 1973

Top Service



only a phone
call away!



- Lawn Mowing
- Rubbish Removal
- Section Maintenance
- Hedge Trimming
- One Off Clean Ups
- Green Waste Removal
- Residential and Commercial Properties
- Free No Obligation Quote
- No Job Too Small or Too Big



Family owned
and operated!



Rivercity Property Care

A cut above the rest

Phone 027 564 8339 A/h 06 927 5300

Email contact@rivercitypropertycare.co.nz



Providing quality care and education for 0-6
year olds in our friendly and welcoming centre.
Don't miss the boat!

20 HOURS
FREE
for 3 to 5
year olds

Opening hours are
6.30am-5.30pm
Monday - Friday

Call or visit us today

19 Tawa Street, Gonville. Ph 347 7941



f SIMPLY WROUGHT IRON LTD

DESIGNERS, MANUFACTURERS
& SUPPLIERS OF

Quality
WROUGHT IRON
PRODUCTS

GATES • FENCES • SECURITY • BALUSTRADES
GARDEN ART • SCULPTURES • LIGHT ENGINEERING

Graeme Kiff
OWNER/FABRICATOR

021 065 7868

graeme@simplywroughtiron.co.nz

06 344 1460

309 Heads Road

Wanganui



Stumpies Services Ltd.

Stump Grinding Services

Kerry & Lee-Anne Davies
15 Mitchell Street,
Aramoho

P: 06 343 7913

M: 027 612 5506

E: stumpies.nz@gmail.com

W: www.stumpies.co.nz

Find us on
Facebook

Stumpies
Wooden
Toys
Wanganui
06 343 7913



PATRICK'S PRE-READ BOOKS

New Zealand Classic and
Collectable Books

Monday to Friday, 10am - 4pm

DESPERATELY LOOKING FOR BOOKS

**BRING ME YOUR BOOKS or
I CAN VISIT YOU & APPRAISE THEM**

BUY • SELL • EXCHANGE

WE NOW HAVE A RELAXING LOUNGE!

- Movie Posters
- Collectable Comics
- Collectable Magazines
- NZ Māori Art
- Paraphernalia
- Transport

PATRICK MCKENNA

65 Ridgway Street, Whanganui - Ph 027 231 6610

email: patrickhenrymckenna@gmail.com

JOE LETT LTD.

Mobility



SCOOTERS • WHEELCHAIRS
WALKERS • STICKS



PLUS MUCH MORE
AVAILABLE AT...

11-13 Churton Street, Wanganui.
Ph. 345 8599

Top Service



only a phone
call away!



Ray White

Thinking
of selling
your home?

Looking for a Real Estate Agent?

Take advantage of our free marketing package or get a 10% discount on commission as a Gold Card Holder*

*Terms and Conditions Apply

Param Singh

021 263 4263

paramveer.singh@raywhite.co.nz

Licensed Salesperson REAA 2008



ARBORIST

A specialist who cares for, and maintains trees.
If this is what you need, call the experts for
"Quality Service at Affordable Prices!"



BAZ BROADHEAD

Qualified Arborist

Ph 021 287 3330, A/H 06 347 8221
for your FREE no obligation quote

Happy Feet

MOBILE SERVICES

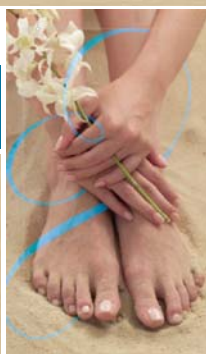
- Pensioners -
Cutting of fingernails
\$25.00

Cutting of Toenails
\$35.00

or both for \$45.00

Includes
Foot Soak, Nail Cut/File and
Foot Massage

Personalised Gift Vouchers
available for Men & Women.



Carlene Sykes

Phone 06 344 6075

Mobile 027 250 9998

Proud to be
Concreting Wanganui's future...
Driveways, Paths, Patios, Floors



For a prompt, friendly, professional service for all
your concreting needs call Stu today

**WANGANUI CONCRETE
CONTRACTORS LTD**

Phone 027 490 5580 or A/H 343 2291

Home Maintenance & Glazing Services LTD

Locally Owned

Repairs to

- Broken Windows
- Steel Window Repairs
- Handles & Door Roller
- New Work
- Handyman Services
- No Jobs too Small

Ph: 06 342 4780

Mob: 027 237 0562

Email: HMGS@inspire.net.nz

ALL WINDOW AND DOOR MAINTENANCE

The Canvas Man W A N G A N U I



- * PVC Drop Curtains
- * Caravan Awnings
- * Crate Covers
- * Trailer Covers
- * Truck Tarpaulins
- * Ute Covers

- * Stone Chip Guards
- * Motorbike Seat Recovering
- * Custom Car/
Motorbike Covers
- * Boat Covers
- * Custom Boot Liners

14 Halswell St, Wanganui.

Phone 06 343 8286 Mobile: 021 022 38519

Email: kazeet@xtra.co.nz



**BANK LOAN
POLICY
CHANGES
AFFECTING
YOU?**

"finance solutions made easy"

Low equity lending still available.

06 345 7089

Margaret Johnson: 027 450 9456

Robert Puklowski: 027 223 2324

51 Wilson Street, Wanganui

hometrustwanganui@xtra.co.nz

EASTSIDE FIREWOOD

**ALL TYPES OF QUALITY DRY FIREWOOD
SHED STORED**

WINZ QUOTES AVAILABLE

ph 343 8466

ONE STOP SHOP FOR ALL YOUR FIREWOOD NEEDS



- ▷ Plumbing
- ▷ Gasfitting
- ▷ Drainlaying

- ▷ Roofing
- ▷ Central Heating



**Considering a central heating system?
Call for your free quote.**

Accredited Radiator and under-floor installers

Daryl Taylor

Certified Plumber, Gasfitter & Drainlayer

027 466 9808 or 06 392 8014

daryl@taylordplumbing.co.nz

www.taylordplumbing.co.nz



TRAFALGAR SQUARE

Celebrating **30** years



Join us for our 30th Birthday **30 DAYS OF GIVEAWAYS**

*Spend \$20 in any store at Trafalgar Square from
October 8 - November 6, 2019 and go in the draw to
WIN a share of 30 giveaways!*

**PLEASE JOIN US ON OUR BIRTHDAY FOR
THE CAKE CUTTING CEREMONY**

10am - 12pm

Wednesday 6 November, 2019



**100 Taupo Quay, Whanganui
Ph 06 348 0314**



“Campbell here, on Campbell Island” - Nature Talk next Tuesday

At the beginning of this year, Jim Campbell, Senior Ranger/Supervisor—Recreation and Historic in the Department of Conservation’s Whanganui Area Office, led a six-person team on a three-month trip to Campbell Island/Motu Ihupuku. The aim of the visit was to study pup production in the New Zealand sea lion/ rāpoka population on the island, focusing particularly on early pup mortality and its causes. The New Zealand sea lion is currently classed as ‘Nationally Critical’ under DOC’s Threat Classification System and Campbell Island is home to the second-largest breeding population of the species.

In this month’s Nature Talks, Jim will describe his experiences on the island, focusing broadly on the island’s unique fauna and flora. Campbell Island is the most southerly of New Zealand’s Sub-antarctic Island territories and the second largest behind Auckland Island. Together with the Antipodes, Snares/Tini Heki and Bounty Island, these islands and the marine environments up to 12 nautical miles offshore



Southern Royal Albatross on its nest on Campbell Island, home to almost all breeding pairs of this naturally uncommon species
- (Photograph by Jim Campbell).

form New Zealand’s Sub-Antarctic UNESCO World Heritage Site.

They host a diversity of wildlife, including large-leaved mega-herbs with their spectacular showy flowers and several bird species that breed only on the island and nearby offshore rocks. Several species have increased since the early 2000s, when rats were removed (at the time the largest such rat eradication project in the world).

Jim’s talk will be given in the Davis Lecture Theatre, Whanganui Regional Museum, on Tuesday, 15 October, starting at 7:30 p.m. Entrance is free but a koha is always appreciated from those who can afford it, to help cover costs.

Nature Talks is a series of monthly talks offered by three local environmental groups—the Whanganui Museum Botanical Group, the Whan-

ganui branch of Forest & Bird, and Birds New Zealand (Whanganui Region), in conjunction with the Whanganui Regional Museum—on topics related to New Zealand’s environment and natural history and their conservation. The talks are normally held on the third Tuesday of each month. For more information, contact Colin Ogle, (06) 347 8547 or by email robcol.ogle@xtra.co.nz.

Red Rose Day - order your roses to support Red Cross

The New Zealand Red Cross has run ‘Red Rose Day’ for the last eight years. Each participating local Red Cross branch can choose any time in the second half of the year to run one. In Whanganui it will be on Friday, October 19.

Trudi, from the Red Cross says, “It has been really successful for us in Whanganui. We always sell out and pre-sales make up a big percentage of that.” She adds, “It is a favourite time for many of our volunteers who do the deliveries as they bring so much happiness.”

The cost of the fresh cut red roses are:

- Bunch of six - \$10.
- Bunch of 12 - \$20.

There is free delivery in Whanganui. To order you can either call into their bookshop at 110 Guyton Street (opposite the District Council) or phone 345 3761. You can also email Wanganui.branch@redcross.org.nz.

Trudi says that the money raised will go to support local programmes such as the Baby CPR programme. This is a two hour programme run in conjunction with Plunket, free for new parents and caregivers on what to do if the baby has medical issues.



The local branch also helps with goods for refugee resettlement, previously in the Manawatu, but from 2020 for the refugees who will be coming to Whanganui. Another important service the Red Cross carries out is through their Disaster, Welfare and Support Team, who respond to disasters such as the 2015 Whanganui flood, locally and nationally. The team trains weekly to prepare themselves for the possibility of an urgent call.



RED ROSE DAY

NEW ZEALAND
RED CROSS
HŌKIA WHIRIO KOTIRAKA

Fresh cut Red Roses

Bunch of 6 - \$10.00
1 Dozen - \$20.00

Friday 18th October 2019
Pre-Order now - Free Delivery in Wanganui

To order: call into the Red Cross Bookshop
110 Guyton St, opposite council or Phone 345 3761
or Email: wanganui.branch@redcross.org.nz



YOUR LANDSCAPING INSPIRATION STARTS RIGHT HERE THIS LABOUR WEEKEND!

Get everything you need and more to turn your garden into a land to be proud of at
Sort It Out Landscape Supplies.

-  Bulk Landscaping Supplies
-  Bagged Garden Products
-  Wrought Iron Features
-  Certus Pavers
-  Outdoor Art

Sort It Out
LANDSCAPE SUPPLIES

19 Rakau Rd (off Mill Rd), Wanganui.
Tel. (06) 345 5494 or 027 641 6245
www.sort-it-landscape.co.nz

Hours: Sat 8-4pm, Sun 9-3pm, Mon-Fri 7.30am-5pm

**Don't forget, we are open
on Labour Day too!**



THE NEW ZEALAND
BREAST CANCER
FOUNDATION

PINK RIBBON APPEAL

This Friday & Saturday

Please give to this worthy cause!

Nine women a day diagnosed with breast cancer

Breast cancer is the most common cancer type for Kiwi women, with 3,300 women a year – or nine a day – diagnosed. Around 40 women a year are diagnosed in the Whanganui DHB area.

Breast Cancer Foundation NZ (BCFNZ) is asking Whanganui locals to take a stand against breast cancer on Friday, October 11 and Saturday, October 12 for Pink Ribbon Street Appeal. Collectors will be shaking their pink buckets at six sites across Whanganui, aiming to raise funds for ground-breaking research into new targeted treatments,



medical equipment for hospitals, innovative

education programmes and vital support for Kiwis going through breast cancer.

Whanganui volunteer collectors will be at two sites at Trafalgar Square Shopping Centre as well as at Mitre 10, New World and Pak n Save from

around 9 through to late afternoon and on Saturday, at the Riverside Market.

Last year, Whanganui people donated more than \$3,300 to the Pink Ribbon Street Appeal for Breast Cancer Foundation NZ's vital work.

Cancer Action Plan welcomed by Breast Cancer Aotearoa Coalition

The Breast Cancer Aotearoa Coalition (BCAC) welcomes the announcement of the Government's Cancer Action Plan on 1 September 2019.

'We are pleased to see the Prime Minister acknowledge that New Zealanders with cancer deserve world-class care and outline a number of steps towards that,' said Libby Burgess, BCAC's Chair.

The increase in funding to PHARMAC is encouraging, but \$60M over two years represents only a 2% per annum increase which falls well short of the OECD average for pharmaceutical spending. The additional funding will bring NZ's per capita pharmaceutical spend to \$212 while Australia's is more than double that at \$466 and the OECD average is \$950.

BCAC is very pleased to see the Plan intends for PHARMAC to consider new medicines at the same time as Medsafe examines their safety and efficacy. We are hopeful this will mean a reduction in waiting times for funding of medicines.

We are pleased to see the establishment of a Cancer Control Agency aimed at providing system-level leadership and accountability. This should drive quality performance and help to overcome regional inequities. However we are concerned that the Agency will be embedded within the Ministry of Health, thus losing the benefits of independent oversight.

BCAC is glad that prevention, screening and early detection are part of the plan in addition to treatment and care. We're pleased to see there will be action to extend the breast screening age from 70 to 74 years but this should be implemented immediately rather than progressively. Work to achieve equity of screening, particularly for Maori women will continue under the plan and we believe this should intensify and include consideration of screening at a younger age than the current 45 years. The plan flags consideration of establishing a service for women with BRCA mutations at high risk of developing breast and ovarian cancer and we hope this will proceed rapidly.

As with any plan, specific targets and timelines and adequate resourcing in terms of capability and facilities, will be vital. Implementation is now key and this will require significant, sustained investment.

You can also text PINK to 4499 to make a \$3.00 donation.



Proud to support the Pink Ribbon Street Appeal



SILKS AUDIT
Chartered Accountants

156 Guyton Street, Whanganui
Phone 06 345 8539
www.silksaudit.co.nz



Quality Decorating

Servicing Whanganui for over 20 years.



Proud to support the Pink Ribbon Appeal

0274 998 610

migg@xtra.co.nz
www.qualitydecorating.co.nz



P.E.R.T.H. CONCRETE



Proudly supporting the Pink Ribbon Appeal

Ph 06 347 7717
info@perthconcrete.co.nz
1B Airport Road, Whanganui

H&A
—PRINT—

CALL NOW FOR A FREE QUOTE

Ph 06 345 3145
info@haprint.com
www.haprint.com



WELCOME TO FAITH CITY CHURCH
A PLACE FOR YOU

BUILDING ON CHRIST

BONDING IN HIS LOVE

BLESSING THE FUTURE GENERATIONS

SERVICE DETAILS
127 SPRINGVALE ROAD 8.30AM - 10.30AM - 6.30PM

web: fcc.net.nz
phone: (06) 345 2065
email: office@fcc.net.nz



BULLOCKS

Proud to be family owned and operated since 1928

www.bbullocks.com

- Drainage
- Subdivisions
- Forestry Roding
- General Contracting
- Concrete & Aggregates



Proud to support the Pink Ribbon Street Appeal



THE NEW ZEALAND
BREAST CANCER
FOUNDATION

PINK RIBBON APPEAL

This Friday & Saturday

Please give to this worthy cause!

New Breast Cancer Foundation app puts power in Kiwi women's hands

This October, your breast health is in your own hands – literally.

Pre Check, an innovative app from Breast Cancer Foundation NZ – launched to mark the start of

Breast Cancer Awareness Month – will take women into a whole new world of breast health awareness. Visual, tactile and audio cues help you search for signs of breast cancer on screen. When you find one, you can learn more about it before being invited to look for other signs.

Once you've explored all the symptoms, a 'how-to' guide will teach you what to look for when self-checking. You'll even have the option to set your own reminder for regular self-checks. This will send a push-notification to your phone, urging you to 'touch, look and check' and showing you how.

"Pre Check is a significant new wellbeing tool for women in New Zealand," says Breast Cancer Foundation NZ's Chief Executive, Evan-

gelia Henderson. "It's an innovation that empowers women and gives them confidence to take control of their own breast health."

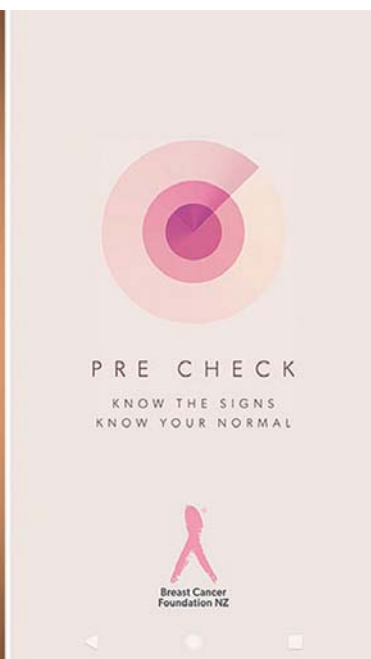
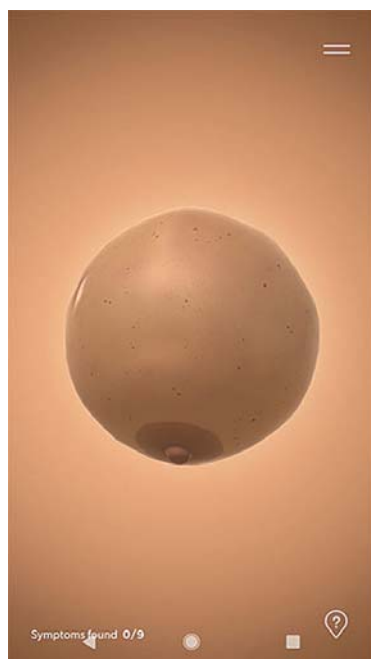
The information has been available before but this is a new way of putting it in people's hands, Mrs Henderson says.

"We encourage everyone from the age of 20 to 'know your normal'. We urge women of breast-screening age to stay vigilant between mammograms and younger women to be breast aware at all times. The beauty of Pre Check is that it puts vital information, quite literally, at people's fingertips.

"Because it's totally portable, you can check whenever and wherever it suits. It's such a great way to be proactive with your breast health. And because it's accessible to everyone, it transcends age, cultural background, income and education levels," she says.

"Breast cancer is most treatable when it is found early, so early detection is your best protection.

That's why it's vital to



know the signs and 'know your normal' – and if you notice any changes, see your doctor immediately.

"If Pre Check encourages women to be more alert to breast changes and

to see their doctors earlier, we believe it will save lives."

Sarah Gandy, who was diagnosed with breast cancer in January this year at age 36, says the new app is a safe, credible source of information that will get people away from 'Doctor Google'. "Having something that gives you the confidence to know you're self-checking properly and reminds you to do it regularly, is amazing," Sarah says.

You can download Pre Check for free from the App store or Google Play, or go to www.breastcancerfoundation.org.nz/pre-check

About Pre Check:

A sensory mobile interface leverages the power of touch, sight and sound

to help women gain a better understanding of nine symptoms of breast cancer. Each symptom has been recreated using haptic feedback technology to add to the experience.

The educational tool allows users to feel around the screen in search of breast cancer signs. You're then prompted to "get to know your own normal". Through an

easy-to-follow visual guide, women are taught how to do a self-check. Personalised monthly reminders ensure these self-checks become routine.



DOYLE
+ associates
THE ACCOUNTANTS

Proud to support the Pink Ribbon Appeal

Whanganui Office

32 Taupo Quay
PO Box 641, Whanganui 4540
Ph: 06 349 0466

Turangi Office

Shop 74, Town Centre
PO Box 13, Turangi 3353
Ph: 07 386 8900

www.doyles.co.nz



Physiotherapy Hand Clinic

IN GOOD HANDS

Juliet Brodie and Lynne Powley

NZ REG. PHYSIO AND HAND THERAPISTS

Ike Crous

NZ REG. OCCUPATIONAL THERAPIST

We specialise in the treatment of elbow, wrist and hand injuries & conditions.

p. 06 345 1198 • 76 Wilson Street, Wanganui

Paul Neal & Associates Ltd
Accountants ~ Wanganui

Your Complete Accounting
Care Providers!

PROFESSIONAL SERVICE!

LANGUAGE YOU CAN UNDERSTAND!

FRIENDLY STAFF!



Proud to support the
Pink Ribbon Appeal

Making Accounting less Taxing!

Unit 3, Suite B, Wicksteed Tce

E-Mail: pneal.ltd@gmail.com

Phone 06 348 9989 Fax 06 348 9939

campbell
AUTO REPAIRS



ANTONY COUPER

134 Guyton Street, Wanganui

Ph/Fax (06) 345 0375

Mobile 027 491 5454

Full Mechanical Repairs

WOF & LPG Specialists

The Best of Old Fashion Service
& Modern Know-How



KJ
& Co

KATE JOBLIN
& CO LTD

CHARTERED
ACCOUNTANTS

10 Wicksteed Terrace

PO Box 7070, Whanganui 4541

T: 06 348 7000

E: hub@teamkj.nz



Pleased to support the
Pink Ribbon Appeal



CHARTERED ACCOUNTANTS
AUSTRALIA • NEW ZEALAND



Jumbo crossword

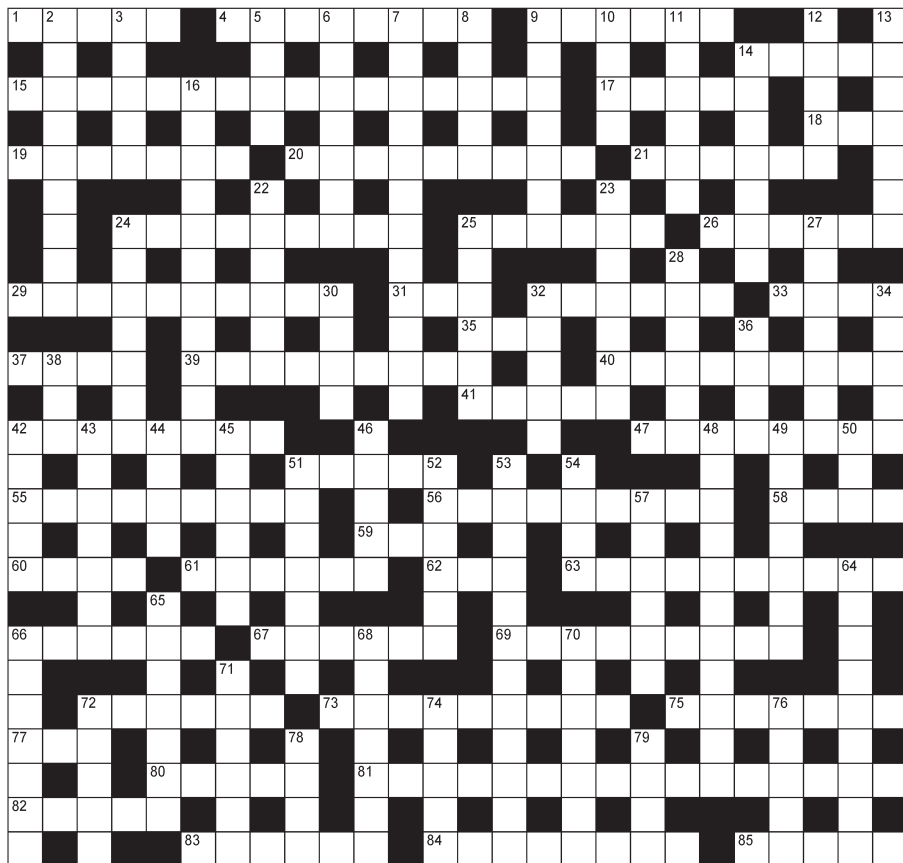
ACROSS

- 1 Seller's patter (5)
4 Patched (8)
9 Scared (6)
14 Lucky accident (5)
15 With unexpectedly rapid progress (2,5,3,6)
17 Pip fruit (5)
18 Bridle mouthpiece (3)
19 Two-wheeled transport (7)
20 Pleasure (9)
21 Attractive (6)
24 Put out of joint (9)
25 Elbow room (6)
26 Amalgamated (6)
29 Accountable for (10)
31 Speck (3)
32 Song (6)
33 Prima donna (4)
35 Self-image (3)
37 Explosive noise (4)
39 Infamous (9)
40 Marching musical group (5,4)
41 Behind time (5)
42 Jail (8)
47 Luxuriously self-indulgent (8)
51 Plans secretly (5)
55 Spinning blade (9)
56 Brickbat (9)
58 Velocity (4)
59 Affectedly shy (3)
60 Appearance (4)
61 Grab (6)
62 Finish equal (3)
63 Robot-like (10)
66 Dismal (6)
67 Ring (6)
69 Related (9)

DOWN

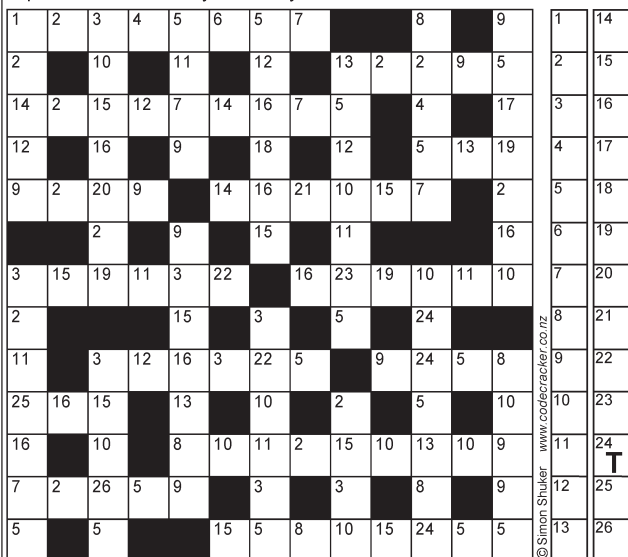
- 2 Doctor (9)
3 Foe (5)
5 And others (2,2)
6 Supplementary additions to a book (7)
7 Evergreen flowering shrub (12)
8 Durable fabric (5)
9 Non-existence (7)
10 Tangible (4)
11 Polluted (6)
12 Military fur hat (5)
13 Came to rest (7)
14 Plume (7)
16 Exert personal influence unofficially (4,7)
22 War (6)
23 Jumping marsupial (7)
24 Wordage (anag) (7)
25 Most modern (6)
27 Make a face (7)
28 Grand residence (6)
30 Cereal heads (4)

- 32 Lodging and meals (5)
34 Accounts check (5)
36 Largest continent (4)
38 Intention (3)
42 Drive forward (5)
43 Advertise (7)
44 Thought (4)
45 Rectangular (6)
46 Long seat (5)
48 Laser-read record (7,4)
49 Soiled (7)
50 Remaining after all deductions (3)
51 One trip (anag)(7)
52 Reaping implement (6)
53 Disillusioned, let down (12)
54 Movie (4)
57 Moved very slowly (6)
64 Landslide (9)
65 Ironed (7)
66 Widened (7)
68 Traversed (7)
70 Impartial (7)
71 Conundrum (6)
72 Plant life (5)
74 Power cables (5)
76 Serenity (5)
78 Strong desire (4)
79 Forewarning (4)



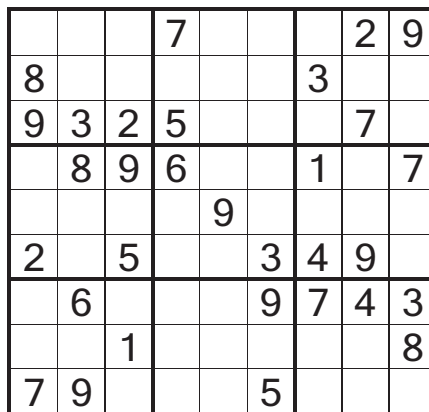
SIMON SHUKER'S CODE-CRACKER Extra 557

EACH number in our Code-Cracker grid represents a different letter of the alphabet. For example, today 24 represents T, so fill in T every time the figure 24 appears. You have one letter in the control grid to start you off. Enter it in the appropriate squares in the main grid, then use your knowledge of words to work out which letters should go in the missing squares. As you get the letters, fill in other squares with the same number in the main grid and control grid. Check off the list of alphabetical letters as you identify them. Visit www.codecracker.co.nz



A B C D E F G H I J K L M N O P Q R S T U V W X Y Z

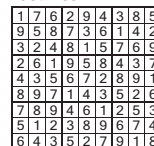
Sudoku



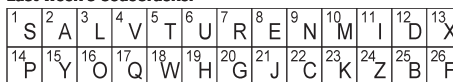
EASY

Fill the grid so that every column, every row and every 3x3 box contains the digits 1 to 9.

Last week



Last week's CodeCracker

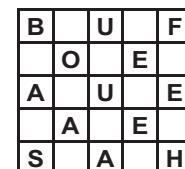


All puzzles © The Puzzle Company
www.thepuzzlecompany.co.nz

Last week's crossword solution

ACROSS: 1 Swing, 4 Under the weather, 14 Shrub, 15 Mania, 16 Negotiator, 17 Model, 19 Nut, 20 General, 21 Digitalis, 22 Prepay, 25 Masculine, 27 Strain, 28 German, 33 Regulating, 35 Lur, 36 Canopy, 37 Drab, 39 Eel, 41 Aspirin, 42 Outfit, 43 Faltering, 44 Caddy, 45 Toughest, 50 Ph, 51 Nostrils, 55 Drier, 58 Brainwave, 59 Earthy, 60 Torment, 61 Bet, 63 Exit, 64 Legato, 65 Eve, 66 Procedures, 68 Brewer, 69 Closed, 71 Dramatist, 76 Sipped, 77 Promenade, 79 Ice cube, 81 Nap, 84 Ratio, 85 Encouraged, 86 Dated, 87 Nudge, 88 In the near future, 89 Tryst.
DOWN: 2 Weaken, 3 Noise, 5 Need, 6 Emotion, 7 Trivia, 8 Extra, 9 Earlier, 10 Tame, 11 Endure, 12 Crony, 13 Abstain, 14 Slipper, 18 Saccharine, 23 Plait, 24 Signify, 26 Amusing, 27 Stretch, 29 Martini, 30 Gets to, 31 Aloft, 32 Apollo, 34 Glue, 36 Clyde, 38 Bogus, 40 Deft, 45 Table, 46 Unlike, 47 Hang, 48 Shared, 49 Limbo, 50 Pretend, 52 Smokestack, 53 Rumours, 54 Linked, 55 Default, 56 Order, 57 Chop, 62 Roomy, 67 Respire, 68 Burning, 70 Surgeon, 72 Radiant, 73 Beaten, 74 Engulf, 75 Abbess, 76 Spade, 78 Mecca, 80 Chair, 82 Moth, 83 Beer.

5x5



Insert the missing letters to complete ten words — five across the grid and five down.
More than one solution may be possible.



Last week

COME FLYING WITH US!

THE SKY IS NOT THE LIMIT!

Experience flying with our introductory trial flight from only \$95
or for \$125 bring two friends!

Ph: 06 345 0914

www.wanganuiaeroclub.co.nz

Package deals, Solo Aircraft Hire and Instructor Hire.
See our website for more information.

SITUATIONS VACANT

GENERAL ENGINEER

**Trade Qualified
Full Time, Permanent**

We are looking for an experienced General Engineer to join our small team based at our workshop in Wanganui and outwork in the surrounding districts.

We need someone with some or all of the following skills:

- Mig and Tig welding
- Machining - Lathe and Mill
- Sheet metal, guillotine and press brake experience
- Factory general maintenance and general shutdown work
- Forestry and farm machine maintenance
- Good work ethic
- Reliability
- Ability to self manage
- Good communicator
- Clean Drivers Licence

Skills and qualifications that are desirable but not essential:

- Working at heights
- Confined space and gas detection
- Mobile elevated work platform

We are a drug free workplace to meet our client's expectations. NZ Residents only to apply.

If you think you would suit our team working on a wide variety of projects, send us a cover letter and CV to
admin@ljengineering.co.nz

Applications close **FRIDAY 25/10/2019**

LJ CALMAN ENGINEERING LTD
8 George Street, Wanganui 4500

CARPENTER

We are looking for the right applicant having been in the building industry for at least 5 years.

- Do you prefer not to be stuck in one place on the same old repetitive task every day but prefer variety to keep life interesting?
- Can you do a wide range of tasks?
- Are you confident in producing a quality job and making happy customers?

Then you are the person for us.

We are a busy company that covers a wide variety of tasks. We specialise in medium and smaller type carpentry and building jobs.

We have a great team spirit here at Saul and a good sense of humour goes a long way.

Please call me today and have a confidential conversation. I'd love to hear from you.

The position will stay open until we find the right person. However we are urgently needing the position filled with immediate start.

Phone Warren 027 499 0073
Or email warren@saul.co.nz



**RCP -
locally owned
& operated**

SITUATIONS VACANT

GET paid to exercise! Pamphlet Distribution require reliable runners to deliver RCP and brochures each week. Phone Bubs on 343 2010 or 027 218 2010. **NANNY** required starting from January 2020. Twenty hours a week 3:00pm to 7:00pm Monday to Friday. Email CV to amshah19@gmail.com



Keith Street School

Te pono me te kore matakau e | Truth without fear

Scale A Teachers

Two Fixed term maternity leave positions

Commencing term 1, 2020 to end of term 4, 2020
Decile 2 U4 school

- Are you passionate, relationship focused, restorative, with a growth mind-set?
- Have you high expectations and practice that reflects current pedagogy?
- We welcome applicants to join our vibrant team of teachers.
- We are a community of professional learners with a supportive board.

Applications close **3pm, Friday 25th October 2019.**

For an application pack please email
lireton@keithst.school.nz

Find us on Facebook - River City Press Wanganui

Copyright:

River City Press produces and/or publishes advertisements strictly on the basis that River City Press is entitled to and owns the copyright in the advertisement so far as the copyright relates to publication or reproduction for publication in any newspaper, magazine or similar periodical or to broadcasting of the advertisement.



Sadly passed away recently...

Graham Walter Alan (Tommy) BATES,
aged 83 years, died 3 October 2019.

Christina Mary, (nee Hughes) BLAIR,
aged 94 years, died 5 October 2019.

Desmond James CHURCH,
aged 72 years, died 7 October 2019.

Edwina DOVE,
aged 89 years, died 4 October 2019.

Kenneth Basil (Ken) GWILLIAM,
aged 75 years, died 9 October 2019.

Barney HEMOPO,
aged 74 years, died 1 October 2019.

Peter Wayne KARATAU,
aged 61 years, died 6 October 2019.

Ngairie Enid KEARSE,
aged 91 years, died 3 October 2019.

Lilian Ruihi MANAWAROA,
aged 99 years, died 5 October 2019.

Rhoda Jean McCLURE,
aged 81 years, died 5 October 2019.

Feona Kotahi Marie McKAY-PATEA,
died 3 October 2019.

Noel Needham MEEK,
aged 79 years, died 29 September 2019.

Tina Louise MOCHAN,
aged 52 years, died 4 October 2019.

David SAINSBURY,
aged 84 years, died 29 September 2019.

MACHINE OPERATORS

Do you enjoy working in a fast paced environment, are physically strong, self-motivated and switched on.

Pacific Helmets NZ Ltd is a successful helmet manufacturing company that exports its product around the world. We currently have two positions available for Machine Operators to join our production team.

These roles are full-time positions:

Monday to Friday with shifts between 6am – 6pm

Key Responsibilities:

- Set up machines to start a production cycle
- Control and adjust machine settings
- Follow technical work instructions exactly
- Able to manufacture product to a high standard
- Keep records of production
- Maximize efficiency

To succeed in this role you must be a team player, have a high attention to detail and be flexible. While previous experience in a manufacturing environment is advantageous, it is not essential for the right candidate as on the job training will be provided.

Pacific Helmets is committed to helping employees learn and grow. There is the possibility for you to learn different skills and progress into different roles.

If you would like to be considered for this role, please email your CV to reception@pacifichelmets.com

FACTORY WORKERS ON CALL CASUAL

Do you enjoy working in a fast paced environment, are physically fit, self-motivated and switched on.

We currently require a pool of Casual On Call factory workers to work in our production team due to an increase in orders.

We are looking for people who can:

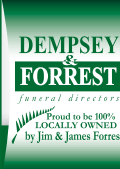
- Work a full 8 to 10-hour shift available between 6am to 6pm
- Able to stand for long periods
- Be prepared to pitch in wherever necessary, including cleaning
- Able to follow Health & Safety procedures, work safely
- Will pass and continue to pass drug screening
- Be reliable and willing to learn
- Able to read and follow detailed work instructions
- Able to be contacted via text or email

Applicants for this position should have NZ Residency or a valid NZ work permit.

If you would like to be considered for the casual pool, please email your CV to reception@pacifichelmets.com



A Personal Way To Say Goodbye



The Forrest Lounge offers a warm, intimate setting for smaller funerals, to share your final goodbyes with those closest to you. Arrange a visit today and meet our friendly team.

Phone 349 0202 (any time, day or night)
www.dempseyandforrest.co.nz

Anderson Memorials
Your loving memories set in stone +100 YEARS 1914-2014

HEADSTONES

Family owned for 105 years



For all
monumental
work in all
cemetries

462 Somme Parade, Wanganui - opposite the cemetery.
Tel (06) 343 8708, Email: info@anderson-memorials.co.nz
Showrooms in Feilding & Palmerston North
www.anderson-memorials.co.nz

Your first choice in funeral care

Cleveland

Funeral Home

facebook

(06) 345 5522

173 - 179 Ingestre Street

River City Press

*Circulation
around 19,000
covering
Wanganui,
Ratana,
Whangaehu,
Turakina and
fully viewable
online.*

52 Ingestre St
Ph 345 3666
Email:
[rivercitypress](mailto:rivercitypress@xtra.co.nz)
[@xtra.co.nz](mailto:rivercitypress@xtra.co.nz)

TRADES AND SERVICES

Quality VEHICLE VALET

Phone STU for an appointment on
027 348 5649



Wanganui Motors

82 Ridgway Street | Wanganui
P 06 349 0930
www.wanganuimotors.co.nz



Sue's Thai Massage

Relieve Stress, Pain, Improve Circulation, Feel Better



Ph 06 777 3105
022 001 6476
180 Wicksteed St.

1/2 hour \$35
1 hour \$60

Web suesthaimassage.wanganui.com

100% locally owned



**Furniture removals door to door
National and international**

390 Heads Rd, P.O. Box 5042 Wanganui
Phone: 06 344 7002 Email: darrell@hoskincarriers.co.nz



06 345 0924

thompsonplumbing@outlook.co.nz

thompsonplumbing.co.nz

CHIMNEY NEED SWEEPING?

Chim Chim Choo

CHIMNEY SWEEP

Over 35 Years Experience

Parts & repairs our speciality

BOOKINGS NOW AVAILABLE

Ph 06 343 1454
Mob 027 555 3074

TRADES & SERVICES

DECKS, gates, trellis, fencing pergolas, odd jobs. No job too small. Yardiez Maintenance. Mobile 0278439392. Give us a call.

PETS AND LIVESTOCK

DOG grooming at Pet Dog School. All breeds, all styles from simple to stunning. Get the look you want. Ph: (06) 345 2553.



Hypoallergenic Steam Cleaning - Pure and Simple

We specialise in cleaning:

- ✓ Walls & Ceilings
- ✓ Venetian Blinds
- ✓ Windows
- ✓ Ovens
- ✓ Kitchens
- ✓ Bathrooms
- ✓ Glass Water Stains
- ✓ Tiles & Grout

Locally Owned & Operated

For a free no obligation quote, contact Dean today:

06 347 9049 | www.puresteam.co.nz

REPAIRS OF SAGGING HEADLINERS RIPPED & TORN CAR SEATS



p: 06 347 2114
m: 027 275 0833
e: shaun.terrey@slingshot.co.nz
w: www.shaunterrey.co.nz
11 Purnell Street, Wanganui 4500



FREE Quotes

- Full Tree Stump Removal
- Full Site Clean Up
- 7 Days a Week - Hours to suit you.

Ph 0274 88 90 90
A/hrs 06 347 9405
www.stumpgrinding.co.nz
bazwatt127@gmail.com



Baz's Stump Grinding

TO LET

FLATTING too expensive? Try a portable cabin. Warm, comfortable, self-contained sleepout, delivered. Phone/text 027 450 4965 or (06) 348 7887, www.ptlportables.co.nz.

River City Press

- the good news paper
52 Ingestre Street
phone 345 3666

Guided by Stars - Wayfinding of our Ancestors talk this Thursday

As part of the Museum's Spring Lecture Series, running on Thursday early evenings in October, there is a talk on 'Guided by Stars - Wayfinding of our Ancestors,' this Thursday, October 10.

Whanganui Regional Museum kaitiaki taonga Māori and kaiwhakaako Māori Awhina Twomey will dispel common myths about Pacific voyaging. These myths include:

- Polynesian voyages to New Zealand were only one way
- They reached this country by accident, by drifting off course
- They arrived here close to death, not having prepared adequately for the trip



Traditional Maori Waka

Awhina will also talk about the role Captain Cook's Tahitian navigator and translator, Tupaia, played in enabling Cook to navigate, draw up maps, meet and talk with Maori. She welcomes any questions.

The talk is in the Museum's Davis Theatre from 5.30pm to 6.30pm. All welcome. Free entry. Koha always appreciated. Refreshments provided. Nau mai, haere mai.

PUBLIC NOTICES

SECTION 101 SALE AND SUPPLY OF ALCOHOL ACT 2012

Bricklane Limited, 1-5 Maria Place and 98 Victoria Avenue, Wanganui has made application to the District Licensing Committee at Wanganui for the renewal of an On Licence in respect of the premises situated at 1-5 Maria Place and 98 Victoria Avenue, Wanganui, known as **Mint Cafe & Bar and Frank Bar & Eatery**.

The general nature of the business conducted under the licence is a on-licence tavern.

The days on which and the hours during which alcohol is sold under the licence are: **Monday to Sunday, 8.00am to 2.00am the following day.**

The application may be inspected during ordinary office hours at the office of the Whanganui District Licensing Committee at 101 Guyton Street, Wanganui.

Any person who is entitled to object and who wishes to object to the issue of the licence may, not later than 15 working days after the date of the publication of this notice, file a notice in writing of the objection with the Secretary of the District Licensing Committee at PO Box 637, Wanganui 4540.

No objection to the renewal of a licence may be made in relation to a matter other than a matter specified in section 131 of the Sale and Supply of Alcohol Act 2012.

This is the second publication of this notice.

The first notice was published on 3 October 2019.

SECTION 101 SALE AND SUPPLY OF ALCOHOL ACT 2012

Dale Thomas Pullen, 791 Rangitatau East Road, Kai Iwi, has made application to the District Licensing Committee at Wanganui for the issue of an On Licence in respect of the premises situated at 791 Rangitatau East Road, Kai Iwi, known as **Bushy Park Homestead**.

The general nature of the business to be conducted under the licence is as a **Home Stay and Function Venue**.

The days on which and the hours during which alcohol is intended to be sold under the licence are **Monday to Sunday, 11.00am to 1.00am the following day.**

The application may be inspected during ordinary office hours at the office of the Whanganui District Licensing Committee at 101 Guyton Street, Wanganui.

Any person who is entitled to object and who wishes to object to the issue of the licence may, not later than 15 working days after the date of the publication of this notice, file a notice in writing of the objection with the Secretary of the District Licensing Committee at PO Box 637, Wanganui 4540.

No objection to the issue of a licence may be made in relation to a matter other than a matter specified in section 105(1) of the Sale and Supply of Alcohol Act 2012.

This is the only publication of this notice.

SECTION 101 SALE AND SUPPLY OF ALCOHOL ACT 2012

Chahal NZ Limited, 88 Guyton Street, Wanganui has made application to the District Licensing Committee at Wanganui for the Renewal of an ON Licence in respect of the premises situated at 88 Guyton Street, Wanganui, and known as **Tandoori Bite/Spice Bar**.

The general nature of the business to be conducted under the licence is a Restaurant and Bar.

The days on which and the hours during which alcohol is sold under the licence are: **Monday to Sunday, 9am-12 midnight.**

The application may be inspected during ordinary office hours at the office of the Whanganui District Licensing Committee at 101 Guyton Street, Wanganui.

Any person who is entitled to object and who wishes to object to the issue of the licence may, not later than 15 working days after the date of the publication of this notice, file a notice in writing of the objection with the Secretary of the District Licensing Committee at PO Box 637, Wanganui 4540.

No objection to the renewal of a licence may be made in relation to a matter specified in section 131 of the Sale and Supply of Alcohol Act 2012.

This is the first publication of this notice.

FOR RENT

FREE electricity. Secure, quiet, friendly. Furnished flats and caravans. Bignell Street Motel & Caravan Park. Ph. 0800 244 635.

WORK WANTED

CAR cleaning wash and wax. Inside vacuumed. Tyre shine. \$30. Phone Warren 0221703024.

GARDENING: Experienced, reliable, courteous gardener seeks clients (casual or regular). Please phone Michael 022 3529144 evenings.

HOME maintenance and shifting. House clean-up, gardening, lawnmowing, water-blasting, spout cleaning, de-cluttering, anything considered. Ph Ray 027 2807015.

MOBILITY Scooters. Sales, service, repair, rental wheelchairs, walkers, ramps. Call Graeme 021 1195118 or (06) 347 6927.

STUMP Grinding, lawnmowing, section clearing. Free, no obligation quote. Clean and Tidy Lawnmowing. Phone 344 2441.

PROPERTIES FOR SALE

Thinking of selling?

Call me today for your Free Market Appraisal.



Ananda de Koning
027 563 3414

BAYLEYS

BARTLEY REAL ESTATE,
Licensed REAA 2008

HEALTH & BEAUTY

JADE Traditional Thai Massage. Excellent massage at reasonable prices. 64 Guyton Street. Phone 348 8466 for an appointment.

JAX Hair Studio. Latest edition GHD in store. Open 6 days, late night Thursday. 51A Ridgway Street. Ph: 3472008.

ONLINE SERVICES

WHANGANUI News Online. Over 12,000 users. www.whanganuinews.nz or find us and others at www.onlineservices.nz. Just click the wanted site.

NEED HELP?

Emergency 111
City Mission/Foodbank 345 2139
Women's Refuge Wanganui 344 2004



CLASSIFIEDS

52 Ingestre St Ph 345 3666
Email: rivercitypress@xtra.co.nz

Nominate someone you think is deserving of our **Bouquet of the Week!**

Email or facebook message us with your nomination and reason why they deserve to win!

email: rivercitypress@xtra.co.nz
facebook: River City Press Wanganui



ENTERTAINMENT / PUBLIC NOTICES

Rotary Rotary Club of Wanganui



Annual MID YEAR BOOK FAIR

Help us to help others!

Thursday 10th to Sunday 13th October

All proceeds in support of the new Wellington Children's Hospital
Some homes will receive complimentary book marks within the RCP this week.

Venue: Old Farmers Homeware Building St Hill St

BUYING and SELLING USED FURNITURE



Phone 345 3154
54 Maria Place Extn
Email: ginza2@xtra.co.nz

PERSONAL

FREE, confidential health checks, STD and HIV screening. Outpatients Department, Wanganui Hospital. Monday and Thursday from 5pm - 6pm. Phone 348 1775.
PREGNANT? Worried? Need to talk? We care, listen and help. Ph. 348 0008 or 0800 PREGNANT 24/7.
TAKE a break. Bignell Street Motel, two hours, \$55. Phone 0800244635.

LAWNMOWING

AFFORDABLE lawns, great quality service, great price. Pensioner rates available. Call Paul on 021 245 4999.

LAWNS NEED MOWING?



- Locally owned & operated
- Pensioner discounts
- WINZ Quotes
- Ride on work

Wayne Bishop
Ph 06 343 1454
Mob 027 555 3074



CITY MISSION WHANGANUI

FOODBANK DRIVE Thursday 24 October

Get your team together and come and volunteer!

Phone in with your team
(06) 345 2139

www.citymissionwhanganui.org.nz

"Empowering people, encountering life"

PRODUCE

FRESH vegetables available, open Thursdays, Fridays and Saturdays. Laugeson's Gardens, Westmere Road.

FOR SALE

JOE Lett Ltd, all sorts of mobility aids including scooters, wheelchairs, available. Joe Lett Ltd, 11 Churton Street, ph 345 8599.

NEW Seasons fresh native and ornamental shrubs and trees from \$5.00 to \$15.00 for large grades now ready, fine landscaping grades, good hedge lines. Dried blood \$8.00 per kilo. Excellent for all garden use. Give your plants that boost now. Parnells Quality Tree & Shrub Nursery, 102 Fox Road., Phone 344 6645, Est 1895.
REDRESS quality men's clothing XXXL to SM. Available at 61 Ridgway St. Ph: 348 7939.
SHEEP manure \$6 per bag. Buy 5 bags, get 1 free delivered. Phone 344 8128 or 027 3934495.
WINZ quotations available with us. Redress, 61 Ridgway St. Ph: 348 7939.

WANTED TO BUY

GINZA. Always buying, always selling. Good used furniture, antiques, china and collectables. Call Ginza 345 3154.
STOVES. Good used condition. Ph 344 7503 or 021 08236124.

PSYCHIC CONSULTANT

SPRING has sprung - bringing new thoughts of possible changes for yourself/business/family. I can help you see more clearly. Sandra Singleton - Numerologist (35 years exp). Private appointments (06) 345 3803 - Text 0274807990. Check me out on YP.

ADULT ENTERTAINMENT

MAN to man massage. A masculine built guy offering full body therapeutic deep tissue massage. Quality service. Phone Robert: 028 4196506.

EMBASSY 3 October 10-16

ABOMINABLE (G) 1hr 47min Thur, Fri, Sat, Sun 10am, 2.05pm Tue, Wed 3.20pm*	Cinema 1:3
CAPITAL 21ST CENTURY (PG) 1hr 58min Thur, Fri, Sat, Sun 8.15pm* Mon 12.45pm*, 8pm* Tue, Wed 8.15pm*	NEW THE LOUNGE Cinema 2
DORA & THE LOST CITY OF GOLD (PG) 1hr 57min Thur, Fri, Sat, Sun 10.15am, 12.35pm* Tue, Wed 3.30pm	Cinema 1:2
DOWNTOWN ABBEY (PG) 2hrs 17min Thur, Fri, Sat, Sun 5.45pm* Mon 5.30pm* Tue 10.30am* Wed 10.25am	THE LOUNGE Cinema 2
GEMINI MAN (PG) 2hrs 12min Thur, Fri, Sat, Sun 12.30pm, 5.15pm*, 8pm Mon 12.45pm, 5.30pm, 8pm Tue, Wed 1pm, 5.45pm, 8.15pm	NEW Cinema 1:2,3
GOLDFINCH (PG) 2hrs 44min Thur, Fri, Sat, Sun 10.15am*, 7.45pm* Mon 1.30pm*, 4.30pm*, 7.30pm* Tue 10.15am, 7.45pm* Wed 10.15am*, 7.45pm*	NEW Cinema 1:3
GOOD BOYS (R13) 1hr 45min Tue, Wed 4pm*	THE LOUNGE Cinema 2
HUSTLERS (M) 2hrs 5min Thur, Fri, Sat, Sun 1.15pm*, 6.10pm, 8.30pm Mon 12.45pm, 3.05pm Tue, Wed 12.50pm*, 5.25pm*, 8.25pm	NEW THE LOUNGE Cinema 1:2,3
JOKER (R16) 2hrs 17min Thur, Fri, Sat, Sun 10am*, 2.45pm*, 5.25pm Mon 3pm*, 5.25pm, 8pm Tue, Wed 10.15am*, 1.25pm*, 5.45pm	THE LOUNGE Cinema 1:2,3
MAIDEN (M) 1hr 52min Thur, Fri, Sat, Sun 3.40pm* Tue, Wed 6pm*	THE LOUNGE Cinema 3
MOSLEY (PG) 1hr 51min Thur, Fri, Sat, Sun 12pm Mon 3.15pm Tue, Wed 3.40pm	NEW Cinema 2,3
SCARY STORIES TO TELL IN THE DARK (R16) 2hrs 2min Thur, Fri, Sat, Sun 3pm Tue, Wed 1.15pm	Cinema 3
UGLY DOLLS (PG) 1hr 43min Thur, Fri, Sat, Sun 4.10pm	Cinema 3

Times are subject to change - please confirm at www.embassy3.co.nz
office@embassy3.co.nz | info line 06 345 7958



WHANGANUI DISTRICT HEALTH BOARD
Te Paari Hauora o Whanganui

WHANGANUI HOSPITAL RADIOGRAPHER STRIKE

Medical Imaging Technologists (radiographers) will strike for 24 hours beginning 7am on **MONDAY 14 OCTOBER** and beginning 7am on **WEDNESDAY 16 OCTOBER 2019.**

- People directly affected by these strikes have been contacted.
- If you have been asked to get an x-ray at Whanganui Hospital, please don't come in on these days.
- Ultrasound appointments will continue as usual.
- 'Life and limb' services - which require medical imaging to prevent death or permanent injury - will continue through the emergency department.

(06) 348 1234 wdhb.org.nz

Better health and independence
He hauora pai ake, he rangatiratanga

PUBLIC NOTICES

COMMUNITY Event Services. Whanganui Sound Services 027-2644-399. Not in book.

FIREWOOD FOR SALE

AFFORDABLE firewood from \$60 a cube for sale. Please phone us on 06 3438466.

ROYAL WHANGANUI OPERA HOUSE

Booking Office
Ph. 349 0511

ONLINE BOOKINGS
www.whanganuivenues.co.nz



Booking Office Hours: Mon. to Fri. 10am-4pm

Booking/service fees apply - no refunds/no exchanges

Repertory Theatre

The Dignity of Risk

Thursday 10, Friday 11 and Saturday 12 October, 7.30pm
Adult \$25, Senior/Student/Rep Members \$20

Wanganui Competitions Society

October Dance Festival

Monday 7 to Friday 11 October

Festival Pass - Adult \$14.50/Child \$8.50 or per day - Adult \$8.50/Child \$4.50.
Or per session - adult \$5/Child \$3

Belmont Golf Club

After 5 with Marilyn Waring

Friday 11 October, 5pm. Tickets \$40

Cooks Gardens

Laser Light Extravaganza

Monday 14 October, 6.30pm

Adult \$10, Child 5-12 years, \$5. Family 2A + 3C \$30

Chamber Music Wanganui Subscription Series

Jacquin Trio

Prince Edward Auditorium, Thursday 17 October, 7.30pm
Adult \$35, Senior \$32, CMV subscriber \$20, Student \$5.

The Keys are in the Margarine

Sunday 20 October, 7.30pm

Adult \$25, Senior/Student/Friend OH \$20. Group discounts

The Boss - Bruce Springsteen Tribute Show

Saturday 16 November, 7.30pm. Tickets \$66

The Bee Gees - Night Fever

Tuesday 19 November, 8.00pm

Adults \$76.50, Group 6+ \$71.50, Child to 12 years \$35.50

Imperial Russian Ballet - Swan Lake

Thursday 28 November, 7.30pm

Premium & A Reserve seating

Adult \$95.75 - \$85.75. Senior/Student/Group 6+ \$85.75 - \$75.75
Child U18 \$65.75 - \$55.75. Family 2A+ 2C \$303.00 - \$263.00

Tina - Simply the Best

Thursday 26 March, 8pm

Adult \$76.50, Group 6+ \$71.50, Child to 12 years \$35.50

Menopause The Musical

Saturday 28 March, 7.30pm. Tickets \$69.90

The Ten Tenors - Love is in the Air

Tuesday 5 May, 7.30pm

Premium Adult \$121.60, Child U18 \$82.50

A Reserve: Adult \$92.50, Group 10+ \$82.50, Child U18 \$82.50

B Reserve: Adult \$82.50, Child U18 \$82.50

Book early for the best seats. Gift vouchers available.

River City Press - the good news paper

FOR LEASE

OFFICE FOR LEASE 396 VICTORIA AVENUE

Consisting of large:

- Reception
- Boardroom
- Kitchen / Lunch room
- Two toilets
- 3 huge offices
- Storeroom - alarmed

Also has:

- 4 carparks
- Air-conditioning & heating
- Accessible ramp & toilet
- Sunny deck

Your neighbours are:

- Subway, Public Trust, Pak'n'Save, AON & Mad Butchart

Price by negotiation
Ph/Text THE LOCAL LANDLORD
0274 434 432

Alcoholics Anonymous

Phone 0800 229 6757. If you have a drinking problem maybe we can help. AA Wanganui area meeting list: Sunday, St Johns Lutheran Church Hall, 51 Liverpool Street, Wanganui, 9am; Monday, Friendship Hall, Morris Street, Marton, 7.30pm; Tuesday, 12.30pm, St Johns Lutheran Church Hall, 51 Liverpool Street, Wanganui; Wednesday, St Luke's Church Hall, 34 Manuka Street, Castlecliff, 7.30pm; Thursday, St Johns Lutheran Church Hall, 51 Liverpool Street, Wanganui, 7.30pm; Al Anon, Tuesday, Quakers, 256 Wicksteed Street, 7.30pm; Friday, Gonville Library meeting room, 12.30pm. Ph 0508 425 266.

At Wisdom is Yours - Wellbeing Centre

Open Night "Learn Meditation" its benefits and how it can help you - Thursday, 17th - 7pm. Guided Meditation Saturdays, 10.30am. Open to all, cost is a donation. For more information contact (06) 3455002 or 0272531858, or pop into 200b Victoria Ave. We are open Monday to Saturday.

Building Awesome Whanau

Beginning Tuesday, 22 October 10am - 12.30pm. Call Jigsaw Whanganui for more details - 06 3451636.

Clairvoyance Demonstration

Clairvoyance, philosophy and healing at the Wanganui Spiritual and Awareness Centre. Our mediums this week are Grant & Glen Richardson from Wellington. 25 Tawa Street, Wanganui. Sunday's 7pm. All welcome. Cost by donation. Like our Facebook page or contact Robert on 345 6308.

Fr Chris Skinner S.M. Performing Live

At a fundraising concert at St Mary's Catholic Church on Saturday, 12 October 2019 at 2pm. Tickets \$25 each and \$20 gold card holders. Purchased from the parish office Monday - Friday, 9am - 3pm or door sales.

Jigsaw Exchange

Previously known as the Jigsaw Club, bring along or take away as many jigsaws as you like. Approx 400 to choose from, no cost involved, free exchange. Meet at 379 Somme Parade, Saturday, 12 October @ 10am. Contact Jack - phone 343 1404 or 021 02775391 or email rega21@xtra.co.nz.

Liturgy - Green Women

Sunday, 20 October, 4 - 5pm. To Register please call Pam on 345 5047 ext 3, or email pam.hopper@sosj.org.au.

Living and Dying Well Workshop

Advanced Care Planning (ACP) to meet individual wishes at end of life. Discussion with new ideas for you and your family to consider. Multiple resources and videos available during the day. All welcome. Saturday, 12 October, 10am - 3.30pm. BYO Lunch, \$20 with Ann Jennison. To Register please call Pam on 345 5047 ext 3, or email pam.hopper@sosj.org.au.

Mainly Music

New term commences Thursday, 17 October 10.00am in St James' Hall. Music and movement - \$2 per child, morning tea included. Pre-school children and their caregivers welcome. Contact Pam 06 3438609 for more information.

Mandala Workshop

In this workshop we will make individual mandalas. This can be a meditative time using pattern, colour and texture. Also, it can be used to record what is happening in one's emotional life path as influenced by Jung. Input both ways will be offered. Saturday, 19 October, 10am - 3pm, \$20 with Trish Daws. To Register please call Pam on 345 5047 ext 3, or email pam.hopper@sosj.org.au.

MIST

Mental Illness Survivors Team, 315 Wicksteed Street, open 9.30am - 3.30pm, Monday to Friday. Closed statutory holidays. A place to share activities and socialise. We offer activities, acceptance and support.

NZ Society of Genealogists

Whanganui Branch meets in the Alexander Heritage and Research Library, Monday 14 October, 6.30pm: Speaker: Snr Constable Keith Thomson speaking about computer and personal safety. Individual research available from 5pm before the meeting.

Seminar: Getting to Know the Bible Better

7.30pm, Tuesdays, in the Christadelphian Hall, 138 Great North Road. Topic this Tuesday, 15 October: "The Final Week - Tuesday (Part 1)". All welcome. Supper and opportunity to chat. Sponsored by Wanganui Christadelphians. For more about us: www.thisisyourbible.com, or phone 342 7726.

Theosophy Whanganui

Exploring spiritual development, philosophy, religion, science and the arts. We have a small library, study groups and regular public discussions. Second Sunday monthly, 2pm. Back river entrance Community Arts Centre, 19 Taupo Quay. Contact Kirsty 021 2123819. TheosophyWhanganui@gmail.com.

Tui Motu Group

Tui Motu, an Independent Catholic Magazine, will challenge us to look with fresh eyes, with gospel eyes, at current social, ecological and spiritual values. Come along and contribute to the discussion-inter-church and inter-faith dialogue is welcomed. Wednesday, 16 October 4.30 - 6pm with Sr Rita Cahill rsj. To Register please call Pam on 345 5047 ext 3, or email pam.hopper@sosj.org.au.

Turakina's Kirkin O' The Tartan Service

Sunday, 13 October at 2pm at St. Andrew's Turakina celebrating Scottish heritage and the wearing of the Tartan. Afternoon tea following the piping in of the Haggis. All welcome.

U3A Local History & Beyond

Next gathering Thursday, 17 October, 2019 at Quaker Rooms, Wicksteed St, Whanganui. Commencing at 2pm. Speaker: Jennifer Taylor-Moore, Curator Sergeant Art Gallery. Topic: "Denton Collection". Gold coin collection. Afternoon tea.

Whanganui Country Music Club

Where: Girls' College Hall. When: Sunday, 13 October, 1:00pm - 4:30pm. An afternoon of country music singing with a live band, afternoon tea, raffles and sales table. Adults: \$4.00, children under 16: \$1.50, families: \$5.50. Come and join us for fun and fellowship. All welcome. Karen or Joey 343-2588.

Whanganui Tech, Boys & City College Past Students Association

Get-together and AGM Thursday, 31 October, 2019 at Club Metro, Whanganui at 12 noon. Please advise attendance for catering purposes. M.E. Farr, Secretary. Phone 06 3446334.

Whanganui IHC Association AGM

The Association will be holding its AGM on Monday, 14 October 2019 at 46 Alma Road, Whanganui, commencing at 5pm with finger food and beverages and finishing by 7pm. Speakers will talk about the 'People First' movement past and present. For more information, phone/text 021 230 4095.

White Water Years

Beginning Monday, 21 October - 5:30pm - 8pm. Call Jigsaw Whanganui for more details - 06 3451636.

What's On in the Community Notices

What's On in the Community notices are \$10 for up to 50 words with the option of a colour heading for an extra \$2 and/or a border for an extra \$10. RCP, 52 Ingestre St, Wanganui by Tuesday 1pm to place your advertisement.

The Dignity of Risk - an intelligent, dark comedy

A winning partnership between two locals - writer Joan Rosier-Jones and play director, Kerry Girdwood - came to fruition in the successful production of Joan's play - 'The Dignity of Risk.' It is about three 'refugees' from the mental health system searching for their Jerusalem and is on at the Repertory Theatre through to this Thursday, Friday and Saturday.

The two are good friends and when Kerry heard that Joan was writing the play, wanted to read it - and when she did, liked it. It was written originally as a film script so together they spent a long time reworking it to make it suitable for the stage. Both were happy with the end result and the Repertory wanted it produced.

Kerry says, "I am really proud to have been involved and I believe the production is stunning." As an experienced Play Director, she could see things Joan hadn't - and thus a winning combination resulted as the play is an intelligent, effective and very watchable production.

It is not an easy play to put on as the three central characters are on stage most of the time. It is a wordy play but Kerry is able to have the audience focus more on seeing the action rather than just hearing it.

The three leads are young but have had an association with theatre. Kerry says Ashlyn Morris as 'Brains' is able to bring her sense of stagecraft to the fore, while 'Dancer', played by Ronan Shaw, is able to shine. Kerry says, "I was thrilled with his performance." The third lead, Mack played by Thor Wigglesworth, who has never done acting at this level, is certainly not out of place. The three work really well together.

The sets used tie in with the story line. In the beginning it is bare and sparse. By Acts 2 and 3, the set mirrors what is happening to the characters and becomes quite chaotic.

Bookings are at the Royal Wanganui Opera House and at the door.

LETTERS TO THE EDITOR

STV or FFP the Difference

Dear editor
Single Transferable means only one vote and that is all everyone gets with STV, only one vote. If your 1st preference candidate polls poorly and is excluded, your vote may be transferred to another candidate.

As a voter the following is the best you can do in an STV election. Annette Main was the highest polling candidate in the 2016 Whanganui DHB election, with the greatest number of surplus votes to transfer. Her 'Keep Value' was .381436861 meaning the 4,235 voters who had her as their 1st preference, had .6185632 of a vote transferred to their 2nd preference candidate. If that candidate was duly elected, part of that .6185632 of a vote was kept by that candidate and the balance transferred to the voters next current preference etc. etc. (By then the 3rd and other preferences may have been excluded).

All other elected candidates had less votes to transfer with the last elected candidate having no surplus votes transferred.

The 833 voters whose 1st preference candidate came eighth in the poll failed to elect a candidate and none of their preferences were used.

With STV every voter is treated differently, with many failing to elect, or assist in electing a candidate. Compare this result to the 2016 WDC First Past the Post election, where instead of just one vote, the average number of votes cast by each voter was more than nine. Every tick is counted.

Why would we want such a complicated system as STV?

Data from the 2016 Whanganui DHB STV public report, was used to compile this letter.

Questions, comments. 027 4535 814.

- John Carson

Roading Disaster & Economic Crash Looming

Dear Editor,

Following on from the Manawatu Gorge Road failure, the arguably even more vital State Highway 4, Parapara section just north of Whanganui, a key link to the central North Island, is at severe risk of total failure - that risk might now be a reality following the slip reported on Wednesday.

These roads are in difficult terrain but after 100 years of use, the Parapara isn't failing for any reason other than massive underinvestment in resilience by Government via their agency New Zealand Transit Agency (NZTA) whilst at the same time allowing heavier loads under the H license. It is only a matter of time before both



Part of the slip with the road broken up on the Parapara. Photo Courtesy of Mark Brimblecombe

impact severely on all our roading networks and the Parapara is the next off the rank. Under-investment in maintenance gets more expensive and harder to fix the longer its delayed so further delay isn't an option.

The entirety of New Zealand should be seriously worried about this. The Parapara is a vital link between both ends of the North Island. When State Highway 1 is closed, then the Parapara is the only practical route. The central and lower North Island economy including tourism, farming and communities also rely on this vital transport link to towns and rural economies in South Taranaki, Ruapehu, Rangitikei, Manawatu and Whanganui. These regions make a significant contribution to New Zealand's GDP.

Under the current Government, rail was transferred into NZTA, making it a super agency. No problem with that but \$1B of funding was transferred from roading to rail without an increase in adequate budget. An annual budget blowout of \$1.5B in maintenance alone!

Major motorway development between Hamilton to Auckland and Wellington to Levin have also blown their budgets, putting further pressure on NZTA. Heavier truckloads under the H license is causing more road damage than previously, without an increase in road capability. With logging also on the rise, additional pressure will only cause more damage.

Politicians need to fund roading adequately. They must stop playing Russian roulette with roading - it's our most basic requirement for a robust economy - both profitability, national connectivity and resilience. The Regional Growth Fund and promises of supporting the provinces won't mean anything if the roading isn't functioning.

Money has never been cheaper to borrow and is likely to stay that way. Economist, Cameron Bagrie during his recent visit to Whanganui, would agree. New Zealand needs to get over its cringe about

debt, sideline the current policy on "Safer Roads" (a money pinching measure in political speak) and use cheap money to build resilience in vital infrastructure. Whanganui has a booming economy after years of hard work by business and council to stimulate growth. All that work might be for nothing if our roading resilience is not addressed urgently.

- Name supplied

Voice of Life

Dear editor

In response to Rhoba Vickoec,

Voice for Life aims to promote and protect the value and respect for all lives, born and unborn, from conception until natural death.

If you take a careful look at the proposed abortion law changes, you will see that VfL are not scaremongering, but simply educating. Even many staunch pro-choicers agree that the proposed bill is too extreme.

Yes, males do take part in 100% of pregnancies. However, in this enlightened age, let us not pretend that girls/women cannot nurture and protect their own children, once conceived, even without a man. However, yes, some women do struggle and that is where we should be increasing the support available, not offering the so-called quick fix of terminating a child's life.

Do not forget also the unborn females, and their worth.

Abortion has widespread implications for all involved. There are many ways in which women and families faced with an unplanned pregnancy need support and VfL aims to provide that to all involved, female and male.

VfL does not wish to cause 'distress in public', please reread the advert.

And finally, VfL is not affiliated to any religious group.

Please feel free to contact VfL online or in the local branch shop should you have any questions.

All the best,
Melinda Bolton

LETTERS TO THE EDITOR

Please keep Letters to the Editor to a maximum of 250 words. River City Press reserves the right to edit, amend or reject any letter. We will not publish abusive letters and will not act as a go-between, between disputing parties.
Letters can be emailed to rivercitypress@xtra.co.nz

**Racing every
Wednesday & Friday**
Come & join the fun!



Manawatu/Wanganui
Call to book **06 345 6794**

HATRICK
Christmas
— AT THE —
GREYHOUNDS

BOOK YOUR CHRISTMAS PARTY TODAY
ivan@wanganuigreyhounds.co.nz
027 484 7559

Looking for your Christmas party solution?

HATRICK RACEWAY
NOVEMBER 29 +
DECEMBER 6, 13 & 20

Christmas at the Greyhounds for food, live music and top-class racing

Hatrack Raceway are having three special nights at the Greyhounds on three Fridays - November 29, December 13 and 20 - and they are offering a complete package of food, live music, entertainment and top-class greyhound racing. It is designed for groups, especially businesses and organisations who want to thank their staff and have a "good ol' knees up to finish off

the year." Their 'santa-tastic' Party Package includes the following:
• A free drink on arrival
• Race book/pen to place a bet on some of the top greyhound racers in the country. There will be 36 races over the three nights.
• A two course buffet of top class food
• Live music by 'Three Screws Loose' from 7.30pm and an MC

throughout the evening till 9pm
• Full bar and TAB facilities
• There will be loads of prizes and a special visit by the one and only, Santa
• To encourage safe driving, sober driver refreshments will be complimentary
The venue has to be one of the best in Whanganui with the long dining room having full windows looking out over the race course, giving you the feeling of being so close to the action. Look up between races and you will see the Durie Hill Tower and the Bastia Hill Water Tower. The dining room, which can cater for up to 200, will be decked out with Christmas decorations.
The chances are that it will be a warm, pleasant evening making it a great opportunity to wander out onto the balcony, but even if there was rain



or wind, the venue is all indoors and out of the elements.

It is a chance to get amongst it by placing bets on the greyhounds. Bets start off as low as \$1 so it is a minimal cost to experience the thrill of watching your greyhound challenge for a win. Greyhounds are extremely fast - a 520m race will be over in less than 31 seconds and the 305m less than 18

seconds. Ivan Howe, Bar & Event Manager at the club says, "These will be the best nights to attend with the top greyhounds in the country competing showcasing the best of the best in our sport."

Gates open at 3pm and racing starts from 4.30pm to 5pm and will continue through to 10pm. But there is no need to go home then as the entertainment will continue through to at

least 11.30pm. Tables are already filling up fast so it would pay to make a booking sooner rather than miss out.

If the dates are not suitable for you, Greyhound racing takes place all year round with 104 race meets in a year - two each week. On Wednes-

days racing is between 12 noon and 4.30/5pm and on Fridays from 4.30 to 10pm. Hatrick Raceway is the second largest Greyhound racing club in the country.

For more information and to book phone 345 6794 or 027 484 7559 - but be quick.



We are proud to support
Hatrack Raceway

0800 80 8570
www.burgessmatting.co.nz
sales@burgessmatting.co.nz



Help your stars recover with an Exceed powershot!

contains bio-available:

- ✓ **Electrolytes**
- ✓ **B-Vitamins**
- ✓ **Creatine**
- ✓ **Omega 3 & 6**



A multi-vitamin & mineral liquid supplement for dogs to improve **endurance & recovery**, immunity, digestion, skin & coat and overall health while building muscle & strength.

Contact palaMOUNTAINS on 0800 484 276
or visit www.palamountains.co.nz

Sponsorship opportunities available

Every Greyhound race is named after a sponsor and is shown not just in the Race Book but on the TAB. Races are shown nationally and internationally through Australian Sky. Racing is all year round and in all weathers. The end result is great exposure for your business. It is also an opportunity to join other local and national companies in promoting your business and Whanganui.

Contact Ivan Howe, Bar & Event Manager at the Wanganui Greyhound Racing Club Inc on 345 6794 or 0274847559. You can also email him at ivan@wanganuigreyhounds.co.nz.

Stevos

DISTRIBUTORS LTD.

FOOD WAREHOUSE

Shop with us for our
famous Goofy Slab Cake
and Party Savoury supplies!

OPEN TO THE PUBLIC

15 Lowther Street, WANGANUI

Phone 06 343 8348 / Fax 06 343 8165

MACELL ELECTRICAL LTD TRADING AS

Absolutelyelectrical

Just the best service...absolutely.

**Reliable, trustworthy electricians
do exist you know. Absolutely.**

Think Absolutely Electrical, your Master Electricians around home, at work, on the farm, in the factory and at the rental property.

Talk to us today!

Call 027 443 0430
absolutelyelectrical.co.nz
info@absolutelyelectrical.co.nz



Adept
ACCOUNTANTS
EXPERT \ SKILLED \ PROFESSIONAL

184 Glasgow Street, Wanganui
06 348 2333 • info@adeptaccountants.co.nz
0800 4 ADEPT



Adept Accountants are pleased to be the chosen providers of accounting and financial advice for Hatrick Raceway

LANCE GREEN
Mob 027 321 0792 A/H 06 345 4424
Email: lance@adeptaccountants.co.nz

TARYN PHILLIPS
Mob 027 270 1261 A/H 06 345 7352
Email: taryn@adeptaccountants.co.nz

TREVOR YOUNG
Mob 021 776 231 A/H 06 342 5527
Email: trevor@adeptaccountants.co.nz



Proud to support our neighbours
Hatrack Raceway!



WANGANUI TOYOTA

We are proud to be a locally owned company
call us for a great deal!

GUYTON STREET, WANGANUI
Phone 06 348 8850



www.wanganuitoyota.co.nz



Property Brokers Limited Licensed Real Estate Agents Act 2008

Ritesh Verma 027 577 7938 Bruce McGhie 027 333 2587 Kayana Tahana-Hopkins 022 096 8310

Black and white



NEW LISTING

BUYERS \$399,000+
WEB ID WGU70920

GONVILLE 101 Alma Road

This wonderful family home sits proud on this large elevated section overlooking Gonville Kindergarten. Completely painted inside and out, you really can sit back and enjoy. This property has been tastefully renovated with the luxury of new carpet throughout. The kitchen, dining and lounge are well-appointed meaning you don't have to miss out on any action while you cook. With two double bedrooms and one single, this is a great family home you will be proud to call your own.

VIEW By Appointment

Ritesh Verma
Mobile 027 577 7938
Office 06 281 3721
Home 06 345 6006
teamritesh@pb.co.nz

Bruce McGhie
Mobile 027 333 2587
teamritesh@pb.co.nz



Perfectly positioned



OPEN HOME

\$569,000
WEB ID WGU69903

COLLEGE ESTATE 33 Grey Street

Character filled homes in great locations don't come along every day! This property exudes all the charm and grandeur of yester-year with amazing feature ceilings, leadlight windows and timber fireplace surrounds. The kitchen will be a pleasure to cook in for family and friends with modern Fisher & Paykel appliances, a fabulous centre island bench and views to the garden. The adjoining dining area has a lovely window seat and is the perfect place for evening dinner parties.

VIEW Sunday 13 Oct 2.00 - 2.30pm

Ritesh Verma
Mobile 027 577 7938
Office 06 281 3721
Home 06 345 6006
teamritesh@pb.co.nz

Bruce McGhie
Mobile 027 333 2587
teamritesh@pb.co.nz



Simply stunning



DEADLINE SALE

BUYERS \$489,000+
WEB ID WGU70806

SPRINGVALE 85 Surrey Road

To be sold by deadline sale - 2.00pm on Friday 11 October and will not be sold prior. The very reluctant owners are giving you the opportunity to purchase their much loved home. They have put their hearts into a beautiful renovation from top to bottom to make this a relaxing sanctuary to live in. If you love to entertain there's a custom made kitchen with a large bifold window that opens to the covered deck, Smeg cooking appliances, seamless acrylic bench, photographic splashback.

VIEW By Appointment

Ritesh Verma
Mobile 027 577 7938
Office 06 281 3721
Home 06 345 6006
teamritesh@pb.co.nz

Bruce McGhie
Mobile 027 333 2587
teamritesh@pb.co.nz



So much to discover!



BUYERS \$399,000+
WEB ID WGU70709

SPRINGVALE 14 Lincoln Road

Situated on an elevated, rear site this large 1920s bungalow is a special find! The home itself offers lots of living - the spacious lounge has the bonus of a nook large enough for an extra couch or office desk. The open plan kitchen and dining room spreads into an anteroom that leads you out to the patio area taking in the views across Springvale. Four bedrooms, the master with en suite and French Doors leading to a quiet courtyard garden and the smallest bedroom is every child's dream.

VIEW By Appointment

Ritesh Verma
Mobile 027 577 7938
Office 06 281 3721
Home 06 345 6006
teamritesh@pb.co.nz

Bruce McGhie
Mobile 027 333 2587
teamritesh@pb.co.nz



"The Hylton"



\$379,000
WEB ID WGU70854

ARAMOHO 33A Hylton Street

As you're driving down Hylton Street this home will not doubt catch your eye, with a pristine new paint job. This fully renovated home is now available for one lucky purchaser to reap the outcome of months of hard work. With new carpet, kitchen and full interior paint all this home needs now are new homeowners. Large spacious open plan living areas throughout, the new stylish kitchen, dining and lounge, make entertaining guests a breeze with room for everyone.

VIEW By Appointment

Ritesh Verma
Mobile 027 577 7938
Office 06 281 3721
Home 06 345 6006
teamritesh@pb.co.nz

Bruce McGhie
Mobile 027 333 2587
teamritesh@pb.co.nz



"Charmed, I'm sure"



BUYERS \$319,000+
WEB ID WGU70430

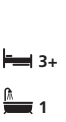
WHANGANUI CENTRAL 8 Plymouth Street

Calling all offers to be in by 4 pm, Friday 11th October 2019 and won't be sold prior. What a charming property this is! The historical three bedroom home has had some renovations done but it still oozes character showcasing the lovely polished wooden floors and feature ceilings. A wood burner in the lounge creates a warm and cosy ambience and in the summer, alfresco dining is a must on the deck, where you can enjoy the surrounds of the lovely brick paths, ponds and the gorgeous private garden.

VIEW By Appointment

Ritesh Verma
Mobile 027 577 7938
Office 06 281 3721
Home 06 345 6006
teamritesh@pb.co.nz

Bruce McGhie
Mobile 027 333 2587
teamritesh@pb.co.nz



Family focused



\$295,000
WEB ID WGU70495

CASTLECLIFF 6 Titoki Street

Get ready for summer and move your family to this great three bedroom home in Whanganui's favourite seaside suburb. The kitchen and dining area open straight out to the patio which is set up for barbecues and the garden beyond is a fabulously safe place for children to play. The separate lounge also opens to the outdoors - to a private deck just perfect for afternoon relaxing. In the cooler months the wood burner and the HRV keep everything cosy. The master bedroom has an extra area.

VIEW By Appointment

Ritesh Verma
Mobile 027 577 7938
Office 06 281 3721
Home 06 345 6006
teamritesh@pb.co.nz

Bruce McGhie
Mobile 027 333 2587
teamritesh@pb.co.nz



Easy living



BUYERS \$219,000+
WEB ID WGU70803

WHANGANUI EAST 130 Duncan Street

If you're wanting an easy living home with great yard space, garage plus workspace and close to all amenities, look no further! 130 Duncan Street presents as a 1+ bedroom that has a lot to offer. This home has had a spring clean with a splash of fresh paint around the exterior and interior. The large lounge has your main double sized bedroom off to the side, it then flows into your kitchen/dining space. From here your separate laundry flows into your bathroom, equipped with a wet-floor shower.

VIEW By Appointment

Ritesh Verma
Mobile 027 577 7938
Office 06 281 3721
Home 06 345 6006
teamritesh@pb.co.nz

Bruce McGhie
Mobile 027 333 2587
teamritesh@pb.co.nz

