

52 Ingestre Street, Wanganui. Phone 345 3666 or 345 3655, fax 345 2644, email rivercitypress@xtra.co.nz

# Rotary about to complete four year plus revamp of Bushy Park

BY DOUG DAVIDSON

Back in 2015, the Rotary Club of Wanganui North recognised that Bushy Park was in dire need of support and an upgrade of its infrastructure.

In case you haven't been to Bushy Park recently, it is a 98 hectare area incorporating a remnant of mature lowland forest, a beautiful wetland and a grand historic Edwardian homestead – and only a 25 minute drive north of Whanganui. It is free to visit and enjoy.

A 4.8km Xcluder pest proof fence was installed around the park and it successfully protects an abundant native bird life including the rare North

Island Robin, the saddle-back and the stitchbird or Hihi. The Park has been ranked as "one of Australasia's Top 25 Restoration Projects."

It is also an important outdoor education classroom for schools from Whanganui and the district, currently hosting up to 3000 students a year. Other than Forest Manager, Mandy Brooke, Bushy Park is totally run by volunteers, including the education programme.

Funding for a part-time educator is being sought at present.

The Rotary project began with the building of the wetland boardwalk and amphitheatre which can sit up to 60 students for school visits. This was largely funded by named wetland boardwalk planks at \$55 a plank, raising \$20,000. The club also had a raffle and the proceeds were matched by a District Matching grant. The walk and amphitheatre was opened by the Governor General at the time, Sir Gerry Mataparae.

The next step was building new and upgrading 1.5kms of forest tracks laid in shell rock. Fortunately one of the Rotary North members is Wilf Emmett who was able to bring in some large machinery to help the volunteer workers from the club.

Within the park is a large northern rata named Ratanui ('Big Rata') estimated to be between 500



Outside the new front entrance – Rotary members Wilf Emmett, Graeme Foster, Cranleigh and Bryce Connybeer

and 1000 years old and is 43 metres in height with a girth that exceeds 11 metres. A new viewing platform for Ratanui was completed.

Forest seating and tables were made from macro-

carpa milled on site and a giant shade sail, tane whakapiripiri, was installed just as you enter the forest, as a gathering point for student groups. The project kept rolling on with a new entrance gate at

a cost of around \$15,000, the stable was converted into a visitor centre and heritage display. A visitor kiosk has been set up next to the parking area. A new series of visitor pamphlets will be available. Just

to make sure you know where Bushy Park is, new highway signage is being installed and there is an easy to follow map before you get started on the tracks.

Continued on page 2

**1 Furniture 4one**  
**OPEN 7 DAYS**  
 Locally Owned & operated  
 151 St Hill Street, Wanganui  
 Phone 06 345 6084

**Time to Sell?** RayWhite  
**FREE MARKET APPRAISAL**  
**FREE MARKETING PACKAGE**

**Marion Farr**  
 Nat Cert in Real Estate  
**021 572 033**  
 marion.farr@raywhite.com  
 Licensed Salesperson REAA 2008

**Victoria Nails**  
 NAIL CARE & SPA

Healthy Natural Nails  
 Manicures  
 Pedicures

**MASSAGE**  
 Hot Stone Aromatherapy  
 Pregnancy Massage Sport Massage  
 Deep Tissue Massage

61A Victoria Avenue, Wanganui  
 Ph 06 348 9195 - Text 021 084 24610  
 OPEN 9am - 5pm, Monday - Saturday

**39th BIRTHDAY PARTY**  
 WIN THE LOT!

For each vehicle sold in SEPTEMBER we will put \$100 into the party hat & at the end of the month one lucky customer will

**ALREADY IN THE HAT \$0000**

Plus special birthday interest rate offer from **7.95%** on all vehicles financed in September. \$495 Oxford Finance fee applies

**Join the Party NOW!**  
 Antony - 0274 365 056  
 Murray - 021 254 3131  
 Graeme - 027 340 4340

**Harvey Round Motors**  
 44-50 Dublin Street  
 www.harveyround.co.nz  
 Ph 06 345 0233

**DEVON Homes**  
 More than just a house

**Victoria**

Floor Area: 157.6 Sq.Mtr  
 Garage Area: 36.3 Sq.Mtr  
 Verandah Area: 33.2 Sq.Mtr  
**227.1 Sq.Mtr**

**DEVON Homes**  
 More than just a house

**Bernard REUTERS**  
 165A Great North Road, Wanganui.  
 Phone: 06-345 2393  
 Email: reuters@devonhomes.co.nz  
 Mobile: 0274 495 125  
 www.devonhomes.co.nz

**DEVON Homes**  
 More than just a house



## Check out what's in this week's RCP

They might be an ageing group but the members of Rotary can still perform wonders. Their contribution to revamping Bushy Park is remarkable and much of the credit has to be given to the driving force behind the project – Cranleigh Chainey. (See our front page article).

This issue has a number of examples of the role of volunteers in our community. Helen Bourne is retiring after 10 years at Citizens Advice Bureau (page 3), volunteers at Kowhai-nui (page 40), the Airport runway fundraiser (page 30), a poetry and jazz fundraiser for Brain Injury Association (page 24) and a family Kite Day organised by another Rotary group – Day-break Rotary (page 9).

There are two articles on the work of the Whanganui Community Foundation – one on its finances and grants (page 6) and the other on three organisations which have benefited from Foundation grants (page 5).



**Doug Davidson,**  
journalist@  
rivercitypress.co.nz

There are four pages (18-21) devoted to Daffodil Day which is the major fundraiser for the local Cancer Society.

A new award has been launched. It is for a Recycling Champion. It will be monthly and the winner will receive a \$50 voucher to spend at Caroline's Boatshed. Nominations can be sent to the RCP but staff at the Recycling Centre will also be observing 'people doing the right thing for the environment' (page 8).

- Doug Davidson

# Rotary about to complete four year plus revamp of Bushy Park

*Continued from page 1*

In the process of cleaning out the stables, they unveiled a horse drawn wagon, had it restored and it will take pride of place in the Heritage Display.

Funding also came by grants from the Eleanor Burgess Trust, a Rotary raffle and a benefactor. The funds add up to \$120,000 not to mention the hundreds of volunteer hours. Cranleigh Chainey led the Rotary committee dedicated to the project and helped inspire the Rotarian and non-Rotarian volunteers. They would come out at least once, sometimes twice a week.

Fellow Rotarian and past Bushy Park Board member for six years, Dennis McGowan says of Cranleigh, "Without his passion, determination and perseverance, the project would never have succeeded."

"Bushy Park owes Cranleigh a big debt of gratitude."

At the same time a Rotary led six person

funding committee was formed for Bushy Park and raised, Cranleigh says, "A staggering \$1.1million from Trusts, lotteries and a benefactor as well as other sources, to renew the toilet block, build an implement shed and volunteer room, build a soon to be opened state-of-the-art Visitor Centre, Heritage Display and a complete renovation of the exterior of the historic stables and homestead."

Cranleigh adds this project "is one of the largest recent hands-on projects within Rotary District 9940, which covers the lower half of the North Island. Our club is proud to be involved in the Bushy Park upgrade, to benefit outdoor education, promote the forest and its birdlife and preserve the heritage buildings. But best of all were the working bees, comradery and the fun



**Hard at work – Rotary members Bryce Connybeer, Graeme Foster, Robin Paul and Colin Slaughter**

that we had."

The Visitor Centre and Heritage Display will be

opened officially by the Minister of Conservation, Eugenie Sage, along

with the Mayor, Hamish McDouall on Saturday, September 14.

## Choir Director needed for Grassroot singers

The Grassroot Singers are excited that their Director, Sue Thorby, has taken a new leap in her singing career. She is off to join the Gypsies. Well actually Sue is off on a seven month musical tour throughout Aotearoa/New Zealand with the Original Gypsy Fair, performing in Whanganui on 1st and 2nd February 2020.

But this means the Grassroots Singers needs a new Director. "We all love singing", said Lyn Pearson, "learning new songs and parts and generally having fun with music. That, after all is why we joined this choir."

The Grassroot Singers choir was started after Rhona Vickooc and Ruth Tidemann did a CES course two years ago led by Sue. And they wanted more. They had been in choirs before and



**The Duncan Pavilion – the home of joyful singing**

persuaded Sue to become a Musical Director, soon finding over a dozen people happy to join them for one evening a week, during term time, at the Duncan Pavilion in Castlecliff, a building with wonderful acoustics.

This choir has learnt

many songs from around the world and Aotearoa, including Negro Spirituals, songs by Fleetwood Mac and Queen, as well as the odd Sea Shanty. All in three or four part harmony with little or no accompaniment. Something some of them have never done before.

Marion Rainforth says, "I especially enjoyed the end of each term concerts, singing for members' birthday parties, the Feijoa Festival and UCOL Family Day."

Jo Anne Chyrtton said this was one way we "spread the joy we gain from our singing. The other is just going to weekly practices and singing with

this friendly group of welcoming people. And, of course, practicing at home during the week."

If you're interested in directing the singing of this group of joyful singers they'd love to hear from you. There is a remuneration.

There also continues to be a committee of members to support the group and negotiate with the Director and handle things like money, bookings and sweeping the floor.

To find out more about joining this group as the Director or a new singer contact rhonavickooc@gmail.com or phone 022369561.

imagine  
GST FREE\*  
comfort

\* Some exclusions apply



**STRICTLY  
LIMITED  
TIME!**



**DANSE  
MØBLER**

**WANGANUI FURNISHERS**

33 Victoria Ave | 06 345 4554

Open Mon - Fri 9am-5pm, Sat 10am-1pm

enquiries@wanganuifurnishers.co.nz

www.wanganuifurnishers.co.nz

**Need a  
dentist?**

**VICTORIA DENTAL**

Make an appointment today

**06 345 3222**

Visit us at Victoria House

1a Rutland Street, Wanganui

**KRISTY'S CAFE**

151A London St, Wanganui  
Phone 347 6030

**FAMOUS RAETIHI PIE**

**UNDER NEW MANAGEMENT**

**BRING THIS ADVERT IN TO GET A  
FREE COFFEE  
UNTIL FATHER'S DAY**



# Your chance to run on the airport runway - spot prizes up for grabs

The Runway Mile 2019 is being held on Sunday, September 8 at the Airport with five races being held between 9.30 and 10.50am. The venue will be open from 9am to 12 noon and the Airport Control Tower Cab will be open to the public from 10am through to 3pm. The event is part of the Whanganui Heritage Month programme and will be a fundraiser for the refurbishment of the Tower.

The Control Tower is a listed heritage building. The facade has been refurbished to what it was like when it opened on December 9, 1961. Work is now concentrated on planning and designing the interior with the plan of setting up an Aviation



Whanganui Airport runway

Museum and Education Centre. Much remains to be done but the Cab is open for visitors being very much as it was in 1989 when Air Traffic Control services at Whanganui Airport ceased.

The race sponsors are Jane Winstone Retirement Village, Mega Mitre 10 Wanganui, Columbus Coffee, Pacific Helmets and Loaders Wanganui. Major funding support is also coming from Whanganui

and Partners. On the day, Airport Staff and Maori Wardens will be helping out.

The first race at 9.30am is the Columbus Coffee Scooters and Skateboards and is for Primary / Intermedi-

ate students. This is followed by the Mitre 10 MEGA Wanganui Primary / Intermediate School Mile at 9.50am.

At 10.10am it is the turn of secondary school students with the Loaders Wanganui Secondary School Mile, followed by the Pacific Helmets Open Mile at 10.30am. The final race at 10.50am is the Jane Winstone Retirement Village Runway Walk. This is for participation rather than competition and is open to all.

The entry cost is \$5.00 for races one to three and \$10 for the Men and Women Mile race. For the Runway Walk an individual is \$5 and likewise for the first family or group member, with

each additional family member, \$2.50.

Spot prizes will be awarded to ten participants in each race and there will be 1st, 2nd and 3rd Certificates to be issued for each race.

These Spot Prizes have a collective value of over \$3,000 and have been donated by Air Chathams, Sanitarium, Jane Winstone Retirement Village, Wanganui Aero Club, Pak n Save, MARS Petcare, Harvey Norman, Bark and Boulders, McDonalds - Victoria Avenue, Embassy 3 Theatre, Rutland Arms Inn, Pizza Hut, New World, Toyota Wanganui, The Mad Butcher,

Scooters Sports Bar and Crystal Water.

Entry Forms are available from Sport Whanganui (Springvale Park), iSite on Taupo Quay, South Beach Café at the Airport and River City Press in Ingestre Street or may be downloaded from the Sport Whanganui Website [www.sportwhanganui.co.nz](http://www.sportwhanganui.co.nz)

Entries close at 5.00pm on Wednesday, September 4 and may be left at Sport Whanganui (Springvale Park), River City Press or posted to P.O. Box 545, Whanganui.

Late entries will be accepted up to 15 minutes before the start times.

## Helen Bourne bids farewell to Citizens Advice Bureau (CAB)

Helen Bourne has been with Citizens Advice Bureau (CAB) for 10 years, including four years as their Chair. But she is retiring to devote more time to other community voluntary activities.

Initially, 10 years ago she transferred downstairs from working with the Samaritans in the old house that used to occupy the spot on the corner of Guyton and Cooks Streets. They had moved out into the country and Helen didn't want to continue with night work with the Samaritans. She says, "I soon found out that the issues were similar and what was required was empathy."

Over the ten years, "the problems have become more involved, more complex and there are so many different angles. Previously we would be able to hand out a pamphlet, but now we spend more time using the computer."

Clients frequently will have 'consulted' the computer but want to talk to a person to run a prob-

lem past a representative of CAB and to be able to come to a conclusion.

The numbers coming for advice, are more or less static and the main issues are very much the same - tenancy, neighbours, trees and fences. Helen says she was doing some research for their 40th anniversary (now 45) and their first inquiry then was about a family of six living in a car shed, asking how could they get a house. Things haven't changed all that much.

CAB always needs more volunteers. Currently they have 23. A shift is for three hours although you can do more than one shift per week. If interested in helping out, contact them on 345 0844.

Helen finishes on August 30 but will be a community volunteer for Restorative Justice, something she has been involved in for the past three years. She is also a member of the Aged Concern Board and also had a long term involvement with Life Education Trust, being on the steering committee, then did the



roles of Secretary/Treasurer, Executive Officer, Chair and is a Life Member. She was also awarded life membership of CAB at their latest AGM.

**Thistles** 136 The Avenue Ph 345-0143  
PRINTED PHOTO ICING

Your Message Here

**In-Store Custom Service**

**Birthdays Weddings Anniversaries Photos & Logos**

**VOTE Ross Fallen for Council**  
A robust voice for our residents

From Community Advocate to the Council Chamber

Email: [dandc5821@gmail.com](mailto:dandc5821@gmail.com)  
Phone 022 430 5818

**Ross Fallen for Council 2019**

Authorised by Steve Selfe, 9 Tauapata Street, Whanganui

**Gonville superValue** just what you need

**THIS WEEK'S SPECIALS**

Beef Mince **\$7.49 kg**

\$20 Trays Chicken Schnitzel or Stir Fry **1/2 Price only \$10.00 each**

**WEEKEND SUPER SPECIAL - STARTS FRIDAY**

**Frozen Lamb Chops or Spare Ribs \$8.99 kg**

**NEXT WEEK'S SPECIALS - STARTING 2.9.19**

Frozen Pork Loin Chops **\$6.99 kg**

\$20 Trays Frozen Lamb Loin Chops **1/2 Price only \$10.00 each**

**Five \$5 Meat Packs still only \$20 (35 different choices)**

**Kumara 1kg bag \$3.00 bag**

**PRODUCE**

Whole Green Cabbage **\$1.69 each**

Kiwifruit Green 1kg Prepack **\$1.99 bag**

All items while stocks last (no rainchecks). Get in early.  
47 Abbot Street, Gonville. Ph 06 344 3002  
Open 7am-8pm - 7 days



# Volunteers bring spark to Whanganui elders

Enliven's Kowhainui Home is on the lookout for Whanganui locals who are keen to make a difference in elder's lives.

"Enliven volunteers make such an amazing difference in our homes," explains Enliven's Business Operations Manager, Suzanne Simpson. "They give much more than just time. Volunteers become friends and supporters; they bring diversity, spontaneity and excitement to our rest homes."

Volunteers of all ages are always needed to help out at Enliven homes and there's a diverse range of roles.

"Volunteers support residents to continue with their community engagements, meetings and groups and support them to keep up with their hobbies and interests," says Suzanne.

Enliven has volunteer gardeners, people who take residents on sight-seeing trips or to events, others who paint resident's nails or run pamper sessions, play music or provide entertainment. Some volunteers help out with recreation activities such as the men's shed or art and craft groups and others provide companionship. "They might visit with their children or



Kowhainui Home volunteer, Bernice

pets, or spend one-on-one time with a resident," explains Suzanne.

"We cannot thank them enough and we are always on the lookout for other dedicated people who want to spend time with elders at our homes or simply help out around the home."

Enliven, part of the not-for-profit organisation Presbyterian Support Central, operates Kowhainui Home and Village in Whanganui. To express your interest in volunteering at this unique home email [Kowhainui@psc.org.nz](mailto:Kowhainui@psc.org.nz) or phone 06 349 1400.



## More Progress in Castlecliff

At last week's well attended meeting held by Progress Castlecliff to present the new artist's impressions for the Platform and North Mole, the meeting nearly got hijacked by people telling their story (and their disgust) about the low life's that use the Morgan St area as their private tip. Progress Castlecliff President, Jamie Waugh and Project Champion, Dep Mayor Jenny Duncan, skilfully turned the conversation back to the important issue of the evening - the artists' impressions. The vision is simply superb and received unanimous support at the meeting. These fantastic community minded people gave us the Rangiora St redevelopment - now it's moving along to even greater things. These drawings are on display at the Rangiora St Community Library so take a look.

## Council has increased the Illegal Dumping Infringement Fee from \$100 to \$400

If you think you can get away with it - think again. There is a new tough attitude being



Artist's impressions for the Platform and North Mole

adopted by Council now - and my experience last week shows just how Council officers are stepping up to rid our community of polluters.

I had noticed these four black rubbish bags for a couple of weeks. They had obviously been dumped, so I thought I would test the system. Council has a new APP for your phone SNAP, SEND, SOLVE so I sent in a photo on the App wondering just how long away a reaction might be.

Within 30 minutes, Anne from the Council rang me saying Clive, the Compliance Officer, will be following it up.

Clive picked up the four bags and searched the contents. He found a name and paid them a visit. It turned out that the named person was from a Guyton St flat and had vacated the property several weeks before. She had dumped the cleanout contents. There wasn't a successful prosecution this time but this zealous enforcement action will eventually produce one. Some polluter will be \$400 lighter.



Dumped rubbish



Illegal dumping sign in New South Wales



Castlecliff Reserve dunes

## 4WD's and Sand Dunes - a bad mix

Last week I walked through the Castlecliff Reserve dunes in front of Seafront Rd. Vehicles and motorbikes are damaging the ecology

in this sensitive area. Volunteers, like Graham and Lynne Pearson, have spent a lot of time replanting grasses and trying to get the plants to regenerate - they deserve support for their

efforts. Council Compliance Officer, Clive Whitham, tells me that he is looking to shut off all entry for vehicles into these dunes - and it's not before time in my opinion.

**independence**

**purpose**

**trusted**

**community**

**variety**

**support**

**fun**

**active**

**caring**

**choice**

A REST HOME WITH SPARK  
**Kowhainui Home**  
88 Virginia Road, Otamatea, Whanganui

Offering rest home and hospital care, respite, health recovery and a popular day programme.

### An Elder-Centred Community

Kowhainui Home is more than just a rest home, it's an elder centred community that recognises older people as individuals and supports them in a way that's right for them. We offer companionship, choice, variety, meaningful activity, independence and fun.

### Family and Friends

Kowhainui Home is like one big family. Residents are encouraged to invite their loved ones to visit at any time; there's no set visiting hours.

### Pets Welcome

We believe pets can be both calming and energising. So, we welcome animals at our home. If you have a pet that's part of your family, ask us about moving to Kowhainui Home with them.

Free phone 0508 ENLIVEN or visit [www.enlivencentral.org.nz](http://www.enlivencentral.org.nz)

# COUNCIL BITS

A personal view from Whanganui District Councillor  
**ROB VINSEN**

## 125th Celebration

**WESTMERE SCHOOL WANGANUI**

**E-MAIL** [125@westmereprimary.school.nz](mailto:125@westmereprimary.school.nz)

**facebook** [Westmere School Wanganui - 125 Celebration](https://www.facebook.com/Westmere-School-Wanganui-125-Celebration/)

**WEBSITE** [www.westmereprimary.school.nz](http://www.westmereprimary.school.nz)

## LABOUR WEEKEND 2019

**Friday 25th October - Sunday 27th October**  
**REGISTRATIONS CLOSE - 20 SEPTEMBER 2019**



# Groups explain how they have benefitted from Community Foundation support

Three community organisations gave short presentations at the Whanganui Community Foundation's AGM, explaining how they have benefitted from Whanganui Community Foundation grants. They were Te Ora Hou, Te Pae Tata, Ohakune and Friends of St Mary's Church, Upokongaro.

Judy Kumeroa from Te Ora Hou said that their work is in "healthy youth and community led development." They have a range of groups but also do special mentoring including young people referred from Oranga Tamariki. In the wider community area they have been involved with the Stone Soup Community for 12 years.

They have been operating out of a small house opposite Tawhero School but have now been able to purchase the building with a plan to replace it with a purpose-built facility, hopefully by September 2020. She thanked the Foundation for being their first partner in the venture, saying it will encourage others to join.

Rachel Hoskin is from Te Pae Tata, which runs a Ruapehu Community Learning and Techni-

cal Hub in Ohakune. The technical focus for their activities includes the use of Virtual Reality, Graphic tables as well as teaching teachers on how to better use virtual reality, music, coding and gamification. In case you are slightly confused about gamification, as I was, it is defined as an "approach to motivate students to learn by using video game design and game elements in learning environments."

They were also able to have one student go to San Francisco to do a one month internship. Other activities include hands-

Judy, Rachel and John

on holiday programmes, computing coding and robotics. Stephen Brandon, Community Engagement and Grants Manager, commented that when he visited Te Pae Tata, it was made clear that they wanted "International Quality."

John Dalziel is Chair of the Friends of St Mary's Church at Upokongaro, the oldest church in Whanganui on its original site - 142 years old. Back in 2003 under the leadership of the late Wendy Pettigrew they had done some restoration work on the tower and the windows but by 2018 more

restoration work was required.

With the assistance of the Foundation, they have been able to repaint the church, repair weatherboards and spouting and also renovate the stain glass windows "using a very old Scottish recipe."

**River City Press - the good news paper**

# Nominations time for Whanganui Sports Hall of Fame

This year's nominations for the Whanganui Sports Hall of Fame close at 5.00pm on Friday, 20 September 2019. The Sports Hall of Fame recognises significant sporting achievements and contributions to Whanganui's sporting heritage.

An online nomination form is available at: [www.whanganui.govt.nz/sportshall](http://www.whanganui.govt.nz/sportshall)

For more information please email Nicky Malipaard, Sport Whanganui, at: [nicky@sportwhanganui.co.nz](mailto:nicky@sportwhanganui.co.nz) or call her on (06) 349 2880 or 021 246 6184.

Whanganui Mayor Hamish McD-

ouall, was appointed to the selection panel for the Whanganui Sports Hall of Fame at a Whanganui District Council meeting on Tuesday, 13 August 2019, following the passing of former Panel Chair, Sue Westwood.

Mayor McDouall will join Ron Palenski (New Zealand Sports Hall of Fame Chief Executive), John Phillips (Sports Journalist), Mark Stoneman (Multisport Event Organiser), Ken Mair (Whanganui Iwi Representative), Sue Haden (Whanganui Sports Representative - badminton, swimming and tennis) and Keith Smith (Hall of Fame Panel Chair) to select the 2019 inductees.

**HARRISON'S**  
**HireMaster**  
**WANGANUI**

LOCALLY OWNED & OPERATED  
SINCE 1975

26 CHURTON STREET PH 345 7017

**WEDDINGS**



SEE US FOR ALL YOUR WEDDING REQUIREMENTS

[www.hiremasterwanganui.co.nz](http://www.hiremasterwanganui.co.nz)



Phone 06 345 5115 | [www.davidjones.co.nz](http://www.davidjones.co.nz)  
276 & 330 Victoria Avenue, Wanganui

**Get into NZ's Hardest Working Range of Vehicles.**

**1.9%**

**APR FIXED FINANCE\***  
**ZERO DEPOSIT**  
**36 MONTH TERM**  
G10, V80, T60 D/CAB AND D90 RANGE.

\*Conditions Apply.



\*Finance offer available to approved applicants of UDC Finance Limited only and excludes all lease and fleet purchasers. Available on new LDV G10, V80, T60 Double Cab and D90 models only. 1.9% P.A. Interest fixed for the term of the loan. Loan terms of up to 36 months. No deposit required. \$100 establishment fee. \$10.35 PPSR fee, and Dealer origination fee of \$250. The GST component of the loan (if any) is repayable in the third month of the loan. Lending criteria, terms and conditions apply to any UDC loan. Offer valid from 19 August 2019 to 31 October 2019. Units must be registered by 31 October 2019. Offer cannot be used in conjunction with any other offer. LDV reserves the right to vary, withdraw or extend this offer. Any accessories shown are optional extras.

**COME AND SEE HOW HARD THE LDV RANGE CAN WORK FOR YOU.**

With only **1.9% Finance over 36 months** and **NO DEPOSIT**. We have Cargo Vans from \$25,990+GST & ORC and Double Cab Utes from \$29,990+GST & ORC. **OFFER ENDS 31ST OCT 2019 OR WHILE STOCKS LAST.**

**BOOK YOUR TEST DRIVE TODAY AT DAVID JONES MOTORS.**



**WORKING HARDER EVERY DAY**

**SAVING THE WILD**  
A DONATION FROM EACH RHINO SOLD WILL GO TO SAVING THE WILD.

**ALL NEW RHINO**

**LARGE**  
1300mm TRAY LENGTH

**XL**  
1600mm TRAY LENGTH

**BIGGEST DECK IN CLASS**

A STYLISHLY VERSATILE PICK-UP WITH GIANT-SIZED TOW CAPACITY. THE ALL-NEW RHINO CAN HANDLE WHATEVER YOU THROW AT IT OR INTO IT. THE NEW RHINO MAY BE A SERIOUSLY STRONG PICK-UP TRUCK. BUT IT DRIVES LIKE AN SUV. TRY IT FOR YOURSELF.

- Petrol or Diesel Engines • Automatic or Manual • 2WD or 4WD • Outstanding Tow Capacity • Full Rigid High Strength Frame
- 5 Seats • Superb Safety Systems • Beautifully Appointed Interior Materials • 8 inch high-definition touchscreen supporting Apple CarPlay and Android Auto • plus a whole lot more. **TEST DRIVE ALL-NEW RHINO AND RHINO XL TODAY.**

SsangYong Rhino from  
**\$25,990**  
+ GST & ORC

**SSANGYONG**



# Whanganui Community Foundation in a good financial position

The Whanganui Community Foundation was able to report an increase in investment income as well as an increase in assets at its AGM on Thursday, August 22. Net assets have increased from \$44,278,410 in 2018 to \$46,453,267 in 2019 while investment income increased from \$3,024,583 to \$3,502,821.

A total of \$1,029,849 was given out in grants with \$184,731 as Quick Engagement grants, which are less than \$10,000 each. Larger grants were made to the Sarjeant Gallery's redevelopment

ment project, Women's Refuge, Life to the Max, Whanganui Learning Centre, Jigsaw, Te Ora Hou Whanganui, Ngati Rangitikei Trust - Te Pae Tata and the Bulls & Community Trust.

In opening the meeting Acting Chair, Trevor Goodwin, noted that the Foundation had welcomed Soraya Peke-Mason, Mike Paki and Tim Easton as Trustees on 11 July 2019. At the same time the Foundation farewellled Julie Herewini, Alaina Teki-Clark and Marie Haira and Trevor thanked them for their contribu-

tion to the Foundation's success.

The Foundation had prepared a video that showed 32 recipient organisations describing how the Foundation had helped them to carry out their work which is so essential in improving the lives of so many people in our region. The video can be viewed at <https://tinyurl.com/wcf2019video> or by going to the Foundation's Facebook page.

After the video had played, Trevor noted that while the various organisations had expressed gratitude for the funds from the Foundation, the Trustees

were humbled by the outstanding work that those organisations carry out and delighted to be able to assist them." Stephen Brandon, Community Engagement and Grants Manager said that, "It was a privilege to serve."

However, Graham Adams did want to congratulate the Foundation for an "outstanding performance." Andy Watson, Mayor of Rangitikei said, "I have been asked by many organisations to thank the Foundation as your grants have, in many cases, been their life blood." On behalf of the Council and community he specifically thanked them for their support for the Bulls Community Centre.

Trevor followed up on a request made at last

year's AGM regarding their investment policies, by saying that the Board does not want to invest in areas which are "to the detriment of the planet or society." He was pleased to advise that investment returns, despite this restriction, "were actually performing better."

Regarding funding applications, he added that "we tend to get similar applications from similar organisations requesting the same things." As a result, they were considering multi-year funding but were concerned about committing future board members. He also advised that the Foundation would be encouraging more collaboration between community organisations.



Stephen Brandon

## Local branch of Warehouse Stationery voted best in the country



From left: Zoe, Russell Burney (store manager), Pete and Sue

Last week Wanganui Warehouse Stationery was awarded the Number One Warehouse Stationery store in the country.

At an event involving both The Warehouse and Warehouse Stationery stores, Wanganui Warehouse Stationery took out the award as the top Warehouse Stationery store.

The Warehouse National Operations Manager, Shane Nalder, said the Wanganui store stood out due to its growth and great customer satisfaction, along with good day to day store management.

The Wanganui team call themselves a

multi-skilled diverse lot who are incredibly proud of the win.

Wanganui Store Manager, Russell Burney, says this is the third time the store has seen a nationwide win. It was also named the top store in 2014 and 2015.

"We put the success down to the businesses and customers who have supported us and helped us to once again become the Store of the Year for the Whole of New Zealand!"

"We are stoked to be #1 again and we couldn't do it without our amazing team and our wonderful customers both driving our success."

## Jazz Quartet to perform in Whanganui this Sunday

The Wanganui Jazz Club & Whanganui Collegiate School are collaborating to bring yet another extraordinary jazz event to the River City. Jazz music in the 21st Century is as much about education as it is about group improvisation and virtuoso performance.

The Committee, a group of outstanding musician/educators, is the conception of bassist Mat Fieldes, one of Aotearoa's finest performing artists. He has assembled a quartet with three other like-minded and gifted artists - Roger Manins on saxophone, drummer Ron Samsom and Dixon Nacey on guitar. All four are currently based in Auckland and have been playing together since Mat returned earlier this year from New York City where he has been based for the past twenty-five years.

The Quartet fly into town on Sunday, 1 September. They will lead an afternoon workshop entitled 'Jazz in the 21st Century' at Collegiate from 2:30 to 5:00pm. Students from all over the region are invited to attend by first contacting Richard Ellsworth, Director of Music at the school. This visit is an exceptional opportunity for students, young and old, of all styles of music to learn from important international educators.

Then it is off to the St Johns Club where the band will perform for the Wanganui Jazz Club's September meeting from



6:30 - 8:30pm. Their repertoire covers a wide spectrum of the music, from both traditional jazz and contemporary styles. This will be a fantastic evening of entertainment for our jazz club members and also for those who are new to the music.

All are welcome, with \$20 tickets at the door. Jazz Club Members and students pay \$10. Doors open for meals at 5:30pm and memberships are available.

"Jazz is ... really about the human experience. It's about the ability of human beings to take the worst of circumstances and struggles and turn it into something creative and constructive".

- Herbie Hancock

## MAT FIELDS AND THE COMMITTEE

**St Johns Club**  
158 Glasgow St, Whanganui  
Sunday 1 September  
from 6.30pm-8.30pm

Doors open at 5.30pm for meals, snacks & bar.

Admission: Members-\$10 Non-Members-\$20  
Enquiries to Ken, phone 022 431 5434

[www.wanganuijazz.org.nz](http://www.wanganuijazz.org.nz) - All Welcome - Pay at the door.

"Bright, exciting, foot-tappin' fun."



## Water Softeners

Microlene Kinetico  
Water Softener - Non Electric

This is a non electric water softener that uses kinetic energy of moving water to power its system instead of electricity.

Ideal for reducing Calcium, Magnesium, Manganese and Iron from water sources to supply soft water to:

- Make cleaning easier
- Make clothes and Hair softer
- Reduce scale in pipes and appliances



**MACHINERY MAINTENANCE LTD**

**Ph 348 9239** 99 RIDGWAY ST  
WANGANUI



# **We're moving to 143 Victoria Ave**

**(old Ballentynes building)**

## **Monday 2 September**



## **Wanganui** *'Capturing Wanganui Since 1977'* **Camera Centre & Framing**

**Photo printing from Smartphones | Instant Passport Photos  
Large Format Printing | Custom Framing | Film Processing  
Photo Restoration | Personalised Mugs, T-Shirts & Calendars  
Photocopying, Printing & Emailing service | Trophies & Engraving**

***"Much more than a camera store"***



# **Cartridge World**

**WANGANUI**

**Recycle, Refill, Less Landfill.**

***All cartridges guaranteed!***

**Look out for our NEW bright yellow shop!!**



# Do you know a recycling champion worthy of an award?



Dale Cobb, Manager of the Whanganui Recycling Centre, Caroline from Caroline's Boatshed and Councillor, Rob Vinsen have announced the launch of the Caroline's Boatshed Recycling Champion Award. Every month someone who is doing something over and above to recycle, will be chosen to receive a \$50 voucher at Caroline's Boatshed.

The person can be chosen either by being nominated for the award or being identified by Dale and his staff at the Recycling Centre. As Dale says, "We know, as sorters and through our

interaction with regulars, who is going above and beyond. We appreciate those who are accurate when dropping off their recyclables into the different containers and those who are not afraid to ask the staff." Dale adds, "We see our role as educators and enjoy discussing recycling with the public."

The other way of choosing someone is for a nomination to be sent to the River City Press, either at the physical address of 51 Ingestre

Street or by email to [rivercitypress@xtra.co.nz](mailto:rivercitypress@xtra.co.nz), stating the reasons why. We will be looking for what the nominee is doing for recycling and how they are contributing to reducing waste and making Whanganui a cleaner, better environment.

The Recycling Centre and the River City Press, supported by Caroline's Boatshed, is keen to receive nominations with the first recipient to be announced as soon as possible.

Dale Cobb with Rob Vinsen at the Recycling Centre



## REVIEWS: Latest Books in the District Library

**Where the Crawdads Sing – Delia Owens**

For years, rumours of the 'Marsh Girl' have haunted Barkley Cove. So when Chase is found dead, the locals immediately suspect Kya, the so-called Marsh Girl. When two young men from town become intrigued by her wild beauty, Kya opens herself to a new life - until the unthinkable happens.

**The Bookshop of Yesterdays – Amy Meyerson**

Miranda grew up in the stacks of her eccentric uncle's bookstore, solving the scavenger hunts he created for her. But on Miranda's twelfth birthday, Billy has a falling-out with her mother and



suddenly disappears from Miranda's life. She doesn't hear from him again until sixteen years later when she receives unexpected news: Billy has died and left her Prospero Books, which is teetering on bankruptcy—and one final scavenger hunt.

**Six Minutes – Petronella McGovern**

One morning, Lexie leaves Bella in the safe care of the other mums in the playgroup. Six minutes later, Bella is gone. As the investigation continues, relationships start to fracture, online hate messages target Lexie and the community is engulfed by fear. Where is Bella?

**The Chain – Adrian McKinty**

Your child has been kidnapped and the stranger that calls you explains that their child has also been kidnapped, but by a different stranger. The only way to get your child back is to kidnap another child within 24 hours. If you don't kidnap a child, or if the next parents don't kidnap a child, your child will be murdered. You are now part of The Chain.

These books are available at all good bookstores, and of course, Whanganui District Library!

## Nominations open for Labour's 2020 candidate in the Whanganui Electorate

Nominations have opened for those who wish to be the Labour candidate for the Whanganui electorate in the 2020 General Election.

Bob Dempsey, Acting Deputy Chairman of the Whanganui Labour Electorate Committee said today: "Planning for the



2020 General Election is well underway and we look forward to selecting a

strong candidate to represent Labour in the Whanganui Electorate at the 2020 General Election."

Announcing the opening of nominations, Labour General Secretary Andre Anderson said: "Our focus is on electing capable, energetic candidates to join the Labour team in Parliament. We are committed to continuing the great work of the Government led by Jacinda Ardern."

Nomination forms and more information can be found at [labour.org.nz/party\\_resources](http://labour.org.nz/party_resources). Nominees must be members of the Labour Party at the time of submitting a nomination form.

Nominations for the Whanganui electorate close on 25 October 2019.

**Springvale Manor REST HOME**

We have a special dementia unit.

*If you want a lovely family caring atmosphere we are the place.*

You're welcome to call in to see what we have to offer.

**Call 348 8003**

47 Treadwell Street Wanganui.

**Resene cardholder special!**

**LOVE your Colour**

**25% off** Resene Premium Paint 10L

**Buy 1 Get 1 FREE** Resene Testpots 60-80ml

*Come in and see us today!*

**Whanganui Resene ColorShop**  
Cnr Wilson & Ridgway Streets, (06) 348 0048

**Resene**  
the paint the professionals use

Discounts off the normal retail price from 21 August - 9 September 2019. Valid only with cash/credit card/ETPOS purchase. Not available in conjunction with account sales, promotional vouchers/coupons or other offers. Excludes trade, ECS and Crown products and PaintWise buy. Offer for Resene ColorShop/DIY cardholders only. Sign up for a free card at your Resene ColorShop or participating reseller. Offer applies to 10 litre Resene premium paints, primers/sealers, wood stains and 60-80ml testpots only.

You may have noticed the hard working team from Beaver Trees working on your neighbours trees... Now is a great time to have all your tree maintenance taken care of, so why not take up our offer of a FREE Appraisal!

**BEAVER TREE SERVICE**

**VOUCHER**

This voucher entitles you to a **FREE TREE APPRAISAL**

**CALL US NOW** 0800 4 BEAVER | 0800 423 283

E: [office@beavertree.co.nz](mailto:office@beavertree.co.nz)  
[WWW.BEAVERTREE.CO.NZ](http://WWW.BEAVERTREE.CO.NZ)

*Your Trusted Professionals for over 50 years*

*A tree is a thing of beauty that adds value to your life, its worth spending money and time on.*

**Specialists in**  
Difficult Tree Removal  
Full Tree Maintenance  
Pruning & Thinning  
Tree Reduction  
Stump Grinding



# Let's go fly a kite at the Racecourse this Sunday

This Sunday, Fathers' Day, the skies above Whanganui Racecourse will come alive. Kite fliers from around New Zealand will bring their colourful creations to Whanganui for a fun family day.

It's Whanganui Daybreak Rotary's annual Monster Kite Day. Whilst the focus will be on the kites, the Club has planned a day of entertainment for everyone.

Whanganui Daybreak President, Raewyn Overton-Stuart, said that the Monster Kite Day was intended to be a fun day out for families.

"We have chosen Fathers' Day as an ideal day for families to get outside and have some fun with their dads and grandads" said Raewyn. "This year, Fathers' Day coincides with the

first day of spring, so it's a great chance to throw off the winter blues."

Local kite flyer and Rotary Club member, Geoff Campbell, is the driving force behind the day.

Geoff, who recently attended an international Kite Festival in Cervia, Italy along with his wife Debra, is a member of the New Zealand Kitefliers Association. They will be joined in Whanganui by a number of NZKA members with kites of all shapes and sizes.

The kite fliers will have a practice fly on Saturday, and Sunday's main event gets underway at 11am.

In addition to the kites, there will be plenty to do on the ground, with food caravans, displays from a wide range of local organisations, a bouncy castle, obstacle courses for children and

a Men's Health tent from the Whanganui Regional Health Network.

Families attending are encouraged to bring their own kites to fly and there will be kites available for sale on the day.

Whanganui Daybreak Rotary is grateful for the support they have received from More FM Whanganui and Sport Whanganui.

The Monster Kite Day will be held in the centre of the Racecourse, with access from Anson Street, off Carlton Avenue. Entrance will be by gold coin donation and Whanganui Daybreak Rotary will use the proceeds for youth projects in the Whanganui District.

**A large array of kites will brighten up Whanganui's skies on Sunday**



## 'Tranquillo' lunchtime organ recital next Wednesday



Organist Margaret Thompson pictured at St Stephen's Anglican Church in Marton

On Wednesday, September 4, Margaret Thompson is presenting a half-hour programme of relaxing music on the beautiful organ of Christ Church in Wicksteed St, Whanganui. This is the third of a series of lunchtime recitals running on the first Wednesday of the month, 12.15pm - 12.45pm. The organiser, Leonard Cave, reports that the series has been extremely popular so far, with varied and interesting programmes.

However, this recital is not going to be about the 'great and mighty' music for the organ. Margaret believes that moments of peace are essential to retain balance in our hectic lives and has prepared a beautiful collection of meditative music to break up a busy day. Mendelssohn's 'Andante Tranquillo' provides the title of the recital. Other pieces include an exquisite Bach chorale prelude based on 'O lamb of God' (the Lutheran Agnus Dei), Swedish composer, Oscar Lindberg's haunting setting of an old folk tune, Vierne's 'Berceuse' (Lullaby), a voluntary by Stanley and finally a 'Humoresque' by Italian-American composer, Pietro Yon, to send everyone out with a smile.

Margaret studied pipe organ under Anthony Jennings in Auckland and graduated with B Mus (performance). Further study followed in Dunedin at Otago University, graduating MA in musicology, and in England at the University of York. She then went secondary teaching, with her last post being at St Mary's Diocesan School for Girls (now Taranaki Diocesan) in Stratford. She has taken early retirement and is now based in Marton, where she has been involved in organising concerts to raise funds for the historic Norman and Beard tracker action organ at St Stephen's Anglican Church.



Formerly  
Hook,  
Line &  
Sinkers



**UNDER NEW MANAGEMENT**

**NEW MENU** at introductory prices

Gourmet Burgers  
Pork Spare Ribs  
Duck & Vegetable Spring Rolls  
Fish and Chips  
Takeaway Ebony Coffee



**OPENING  
SPECIAL**

**Gourmet Fish Burger  
with Homemade Tartare Sauce**

**ONLY  
\$6.50  
AND GET  
A FREE  
SPARE RIB**

Special valid until 1 Sept 2019

OPEN Tuesday to Sunday, 11am - 8pm  
209 Victoria Avenue, Whanganui  
Phone 06 345 8383



"Let us relate  
to each other"

**Vote**  
**Vijeshwar**  
**Prasad**  
for  
Council



**Interested in your well being**

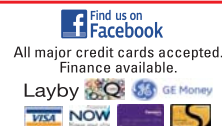
Authorised by V. Prasad, 136 Anzac Parade, Whanganui

*Indiana  
chaise suite*

This is available  
left or right hand.  
**only \$899**



**OPEN  
7 DAYS**  
151 St Hill Street  
Whanganui  
Phone 06 345 6084



**WANGANUI  
BEDROOM  
Specialists**



## Election candidate profiles

Published by the River City Press, 52 Ingestre Street, Wanganui, phone 345 3655.

**Copyright:** River City Press produces and/or publishes advertisements strictly on the basis that River City Press is entitled to and owns the copyright in the advertisement so far as the copyright relates to publication or reproduction for publication in any newspaper, magazine or similar periodical or to broadcasting of the advertisement.

*Election candidates for both the Wanganui District Council and the Wanganui District Health Board have been given the opportunity to submit a 'candidate profile' about themselves so the public have a chance to get to know a bit about them before the elections.*

*These will be published over the next few weeks in River City Press. Here are the first of the candidates to feature.*



James Barron

### James Barron - WDC and WDBB candidate

With 30 of my 52 years building deep business experience consulting and delivering real IT change to enterprise, local and central government, I understand management and change. With recent real success with Castletown's rejuvenation I've built a deep appreciation and affection for our Wanganui communities. I'll work to see Council developing agile, smart change and

engagement with residents, iwi, businesses, artists and all calling Whanganui home.

Housing focus – I believe we have a crisis and will look hard to find where council can make changes to see more good, affordable homes. Fixing delays, barriers and costs arising from the building consent process and encouraging more density to give us more affordable homes.

Community engagement focus – I've seen the value of real community engagement delivering real value from limited budgets.

Recent achievements (at no cost to the ratepayer):

- Housing: Bringing MBIE/DIA Healthy Homes working group to Whanganui & facilitating engagement with Council, tenants, landlords and iwi.

- Community: Building the Castletown Library delivering literacy, training, community space and services. Vision and support for church, Waka Ama, KASM making change at a local level. Council engagement. Secretary of Progress Castletown.

- Business: Building on success with Citadel Café, nurturing "Soul, Body, Beauty" Hairdresser with co-working hub to come. Assisting numerous local businesses with Google listings.

- Digital: www.Castletown.NZ/Facebook - that have been instrumental in building Pride in Castletown. CCTV. Various public digital access initiatives.

- Art: Inspired public spaces.

To take rejuvenation from suburb to city, I ask for your vote.

- James Barron

\*\*\*



Philippa Baker-Hogan - WDC and WDBB candidate

I've been on your Council and Health Board for over a decade and seen Whanganui go through its fair share of success and challenges but I am really excited to be putting my hand up again for both positions and my experience and work ethic is as important as ever in those roles.

I have battled to keep rates and debt down, ensure the sustainability of the NZ Masters Games, drive the Sport and Recreation Facilities Strategy with funding available for

our crucial sporting facilities, help drive an effective Housing Strategy and improve processes within our Alcohol Licensing area. I take every opportunity to ensure any commitment Council makes to grow our district filters down to those most at need in our Community and sit with the Mayor on Safer Whanganui to help drive this.

However, I am staking my election campaign on the "Velodrome Events Centre" and am determined to ensure Whanganui finally covers our World Class Velodrome and ensures its financial sustainability as a multi-purpose Events Centre, capable of holding large sporting and non sporting events and concerts, as there is an identified need for a large open air, covered space in our region.

Sport has been the poor cousin in Whanganui for too long and yet has a crucial role in the health and wider well-being of our families and plays a massive role in economic development for Whanganui. The Velodrome is a significant point of difference for Whanganui and it can't be left to deteriorate anymore. As Chair of the Project Control Group that is working hard on this project with Council and the Regional Velodrome Development Trust to oversee this project, I give you my wholehearted commitment to get this project over the line in the next three years.

Our former Mayor, Annette Main and Cycling guru, Ron Cheatley, have signed my Council nomination form, with both of them understanding the value of the Event Centre Velodrome to Whanganui and our region. Annette says "she has been frustrated that this significant asset hasn't been valued and covered yet, but sees in her role as Holdings Chair, the growth projections for Whanganui forward and believes the time is right". Ron, a former NZ Cycling coach says, "he is tired of the vital role of sport and recreation, particularly for our youth being undervalued and has seen other covered Velodromes flourish in regions like Whanganui".

I am the most experienced Health Board member and stand again to ensure our sustainability forward in the ever increasing deficit, workforce and high health needs environment we currently face.

I put my name forward again to represent you strongly and will always put the people first.

- Philippa Baker-Hogan MBE

Candidate 2019 Whanganui District Council and Whanganui District Health Board Elections

\*\*\*



Alan Taylor - WDC candidate

Alan Taylor is a fifth-generation Whanganui resident. He has served four terms (two as Chair) on the Whanganui Rural Community Board followed by this last term as a Councillor. He is married to Bronwyn.

Schooled in Whanganui and gaining a post-graduate honours degree in Climate Studies at Massey University, he then lectured in Earth Sciences at two Canadian Universities before returning to his Westmere farm.

From 1980-2000 agricultural politics called him to Federated Farmers leadership where he chaired the New Zealand Grains Council, assisting in the establishment of the Foundation for Arable Research and the Arable Food Industry Council.

This Council term has seen him instrumental in removing some inequity from the rating system through driving the move toward having logging truck damage to our roads more fairly paid by all road users. He has strongly supported changes to the District Plan to enable housing growth on our less productive land. His qualification as a Resource Management Act Commissioner gives him valuable understanding of how important a strong and workable District Plan in shaping the Whanganui District.

As Chair of Council's Infrastructure and Emergency Management Committee, he has overseen councillor input into the completion of the Wastewater Treatment Plant, the Airport Road Culvert and important links in our urban cycleways. He also co-chaired the Tamaupoko Link liaison committee during this term.

His principal focus, if re-elected, will be to facilitate improved funding mechanisms for Council (continued rate increases are neither sustainable nor fair) and advocating for infrastructure improvements and resilient community development as the onset of Climate Change impacts challenges everybody.

- supplied



## Alcohol Policy aims to reduce alcohol-related harm in Whanganui

Whanganui District Council's Local Alcohol Policy comes into force on Monday, 2 September 2019 after the provisional policy was adopted by the Alcohol Regulatory and Licensing Authority on Wednesday, 3 July 2019.

The policy aims to reduce alcohol-related harm in the Whanganui District by: considering the location of licensed premises in relation to sensitive sites such as schools; limiting the number of off-licenses (excluding supermarkets and grocery stores); a one-way door restriction for on-licenses where licensed hours exceed midnight; maximum trading hours for licensed premises; and, inclusion of discretionary conditions for the District Licensing Committee.

The one-way door policy and maximum trading hours for licensed premises will not come into force until Monday, 2 December 2019 – three months after notification that the Local Alcohol Policy has come into force.

Safer Whanganui spokesperson, Lauren Tamehana, says achieving a Local Alcohol Policy has taken a large amount of work and dedication from a number of organisations. "Safer Whanganui is concerned about the amount of alcohol-related harm in our community and we now have a locally-focused policy that will work towards minimising that harm."

The Sale and Supply of Alcohol Act 2012 allows councils to adopt a policy relating to the sale, supply and consumption of alcohol for their district.

The Council's Policy and Governance Manager, Stephanie Macdonald-Rose says, "The Local Alcohol Policy reflects the community's commitment to putting a policy in place to help reduce alcohol-related harm."

"Developing the policy has been a collaborative effort between the Council, iwi, Whanganui District Health Board, police and community and health groups as a substantive way to make a difference to the health of our community," she says.

The provisions of the Local Alcohol Policy include:

- The number of off-licenses in Whanganui District be limited to 14, excluding supermarkets and grocery stores and none within 100 metres of the legal site boundary to a sensitive site.

- Sensitive sites now include alcohol treatment centres and children's playgrounds as well as early childhood centres, primary and secondary schools, marae and places of worship.

- A one-way door restriction for on-licenses where licensed hours exceed midnight. This means anyone

exiting an on-licence won't be admitted or re-admitted one hour before the establishment closes.

- Maximum hours for on-licence tavern, bar, pub or nightclubs are 8.00am to 2.00am the following day. For clubs and on-licence restaurants, the maximum hours are 8.00am to midnight.

- Maximum licensed hours for off-licence grocery stores, supermarkets and bottle stores is 7.00am to 10.00pm. Maximum licensed hours for off-licence hotels, bars, taverns and cellar doors is 7.00am to 9.30pm.

The Local Alcohol Policy is available on Whanganui District Council's website [www.whanganui.govt.nz/local-alcohol-policy](http://www.whanganui.govt.nz/local-alcohol-policy) and can be viewed at Whanganui District Council customer services, 101 Guyton Street and the Davis and Alexander libraries, Pukenu Drive, Pukenu Queen's Park and Gonville Library, 44 Abbot Street, Gonville.

**Delicious North Indian Takeaway**

**OPEN 7 DAYS**  
Monday to Saturday, 9am - 9pm  
Sunday, 4pm - 9pm

51F Abbot Street, Gonville Shopping Centre, Wanganui  
Phone orders **06 344 7838**

**Breakers**  
CAFE AND BAR

**Childrens meals from \$7**  
**Birthday Party Specialists**

**THE GRAND HOTEL**  
Cnr Guyton & St Hill St, Wanganui  
Ph 0800 The Grand, (06) 345 0955

CLUB **metro** 13 Ridgway Street, Wanganui 349 0149  
RESTAURANT | BAR | GAMING

**Lunch 11.30am - 2pm**  
**Dinner 5.30pm - 8pm**  
**TUESDAY - SATURDAY**

AMALGAMATION OF WANGANUI  
**RSA** + **Wanganui Community Club** Members and Bona fide Guests Welcome

Located in the Wanganui i-SITE building  
**31 Taupo Quay.**  
**Ph 06 348 7626**

**NEW MENU OUT NOW!**  
**SUNDAY - WEDNESDAY, 8.30am - 5pm**  
**THURSDAY - SATURDAY, 8.30am - 8pm**

[www.mudducks.co.nz](http://www.mudducks.co.nz) Email: [info@mudducks.co.nz](mailto:info@mudducks.co.nz)



## Election candidate profiles



**Sharon Duff -  
WDC candidate**

Sharon Duff is standing for Whanganui District Council. She knows that the biggest problem in Whanganui is the availability of healthy housing for all. It's an issue that is escalating: "We don't have enough rental properties, buying a house is hard and our houses are often damp and cold."

Sharon has worked in emergency housing and healthy homes for over 15 years. Her experience includes brokering the deal to insulate the WDC pensioner flats at no cost to rate payers valued at \$600,000 and working for health and community partners to raise funding, which resulted in \$4.8 million being spent on insulation in our region. Sharon has worked on the Warm Homes for Elderly New Zealanders project, which led to the Winter Energy Payment being put in place for all super-annuants. "Opportunities need to be created to take advantage of the diverse government housing initiatives for social housing and inner-city development."

Sharon has held many governance positions and worked as a health promoter, business development advisor, business owner and student president. She supports Whanganui's incredible heritage plants, seeds and fruit trees projects, which has led to many happy hours giving out heritage tomato plants and Montys Surprise Apple trees at the market. She has brought up four children in Whanganui

and now has three children and grandchildren living here. Sharon is passionate about many aspects of Whanganui life, such as the great people who live here, our wonderful art and sport facilities and more recently, Cross Fit.

- Sharon Duff

\*\*\*



**Steve Baron -  
WDC candidate**

Our council's job is to set the strategic direction for Whanganui, monitor council management and ensure ratepayer money is used frugally.

Being a good Councilor is about listening to the community. It's about keeping an open mind and being prepared to change it when the facts warrant

it. It's about doing your research to make sensible decisions. It's about using commonsense and it's about commitment to the job, putting in the time and effort to do it right—at a minimum, that's turning up to meetings.

I believe these are the attributes I have to offer you and that's why I'm asking you to give me your vote again this election. I support changing the voting system to STV because I know it's the fairest system to elect Councillors and the Mayor.

My promise: "Community, Common sense & Commitment." I hold no political party or religious affiliations. [www.stevebaron.co.nz](http://www.stevebaron.co.nz) for more information.

- Steve Baron

## Over 100 attendees coming to Whanganui for educational hui

Te Hui-ā-tau o ngā Pouwhirinaki o te motu is a conference organised for Resource Teachers of Learning and Behaviour (RTL) around the country to meet on a national level to share, upskill and celebrate effective practices that accelerate learning and foster positive behaviour and wellbeing for tamariki Māori. The hui is being hosted by Te Tai Hauāuru (Whanganui RTL Cluster 25) at Whangaehu Marae from November 13th to the 15th.

Hui-ā-tau is an annual conference and each year is hosted by one of the 40 different RTL clusters around the country. This year, Te Tai Hauāuru will be hosting around 110 RTL and educators who will convene for this year's theme of, 'Nā tō rourou, nā taku rourou, ka ora ai ā tātau mokopuna' which translates to 'With your basket and my basket, our children will thrive'.

Kaupapa Māori is the foundation of the hui and Te Reo Māori me ona tikanga is encouraged and supported by all who attend. The annual Hui-ā-tau is funded through fundraising efforts and sponsors from the local community, with Education Services being a major sponsor of this year's hui.

On the first day of the hui, attendees will be welcomed to our region and will be taking a waka trip on the lower river and learn more about the history of the people and our region through an interactive visit to the Museum. Rowena Martin, one of



the organising committee members from Te Tai Hauāuru, says that this will provide a spiritual connection which will be the foundation to our hui, so our visitors will become one of us.

On the second day of the hui, there are local and national keynote speakers who will cover a range of topics including Literacy strategies for Māori, School-wide Kaupapa Māori approaches to managing behaviour and strength-based relational tools that enhance wellbeing. There are also two leading national academics participating. They are Sonja Macfarlane and Mere Berryman, both Professors at the University of Waikato who are both leading educators in the field of evidence-based approaches to supporting tamariki Māori. This day is open to all RTL and interested principals, teachers and local support agencies who want to register and attend.

On the final day, there will be a visit to Ratana Pā to be immersed in Ratana culture and following this, there will be the necessary AGM attended by RTL.

If you are interested in coming, or would like to become a sponsor for this valuable national conference, please contact Trish Biddle-Amoroa at [hui.aa.tau2019@gmail.com](mailto:hui.aa.tau2019@gmail.com)

## Play puts mental health in the spotlight



**Joan and Kerry**

Joining the Whanganui Literary Festival line-up is *The Dignity of Risk*, a new play by Joan Rosier-Jones, directed by Kerry Girdwood. The title has puzzled some would-be patrons and Joan explains: "It was the deeply cynical term used by the authorities when they disestablished mental institutions, such as Lake Alice, Sunnyside and Sealiff. It was intended to offer self-determination and the right to take reasonable risks to those who were living under "excessively cautious caregivers concerned about their duty of care."

In order for the scheme to be effective, there had to be support systems in place. This did not eventuate. The prisons began to fill and many people were left to drift. That was in the 1990s, but little has changed since then. Everyday we hear of mental health patients let down by the system which is supposed to cater for them. This play is about three of them, cast adrift by circumstances.

Originally the play was entitled *Crusade* because the Fourth Crusade of 1204 is an obsession of one of the characters. It was decided that the title needed to be changed after the events in Christchurch in March this year. How-

ever, that particular crusade is still a focus for this black comedy.

As the playwright points out, 'None of the Crusades were noble enterprises, but the Fourth Crusade was a disaster from the outset. Their goal was supposed to be Jerusalem, but the Crusaders did not make it past Constantinople, at that time the capital of the Eastern Christian Church. They killed their fellow Christians and ransacked the city mercilessly.' The ensemble of three refugees from the mental health system are also looking for their Jerusalem. The play follows them on the journey.

Director, Kerry Girdwood says of the play, 'It is topical, deeply layered, and often very funny. The characters are wonderfully drawn and believable. I have always admired Joan's writing; this play is no exception and I am enjoying bringing it to life on stage.'

**Repertory Theatre,  
Ridgway St. Opening night  
Thursday 3 October, 7.30pm.  
Also on 4, 5, 10, 11, 12 October.  
Bookings at the  
Royal Wanganui Opera House  
as well as door sales.**



**GRAHAM  
ADAMS**  
**Seeking  
Re-Election to the  
Whanganui District  
Health Board**

Undoubtedly the appointment of our new CEO Russell Simpson was the right one. He has settled in exceptionally well to an environment which needed change for the betterment of the 65000 population the WDHB serves. A significant number live in rural areas and I support 100% the Board's commitment to addressing the needs of those people as well as delivering a wide and increasing range of services for everyone.

I very much wish to continue my association with the Board for **one more term** in order that I may continue to encourage our CEO with the outstandingly beneficial changes he is implementing.

**GRAHAM ADAMS | YOUR VOICE | NUMBER 1 CHOICE**

Authorised by G Adams 29 Treadwell St, Wanganui

**Proudly supporting  
our region.**



**Harete Hipango**  
MP for Whanganui

Suite 7  
210 Victoria Avenue  
Whanganui  
Phone 06 348 9150



**6.95%  
INTEREST\***

## TOYOTA COROLLA SPECIAL

2016 GLX Toyota Corolla  
5 TO CHOOSE FROM

NZ New, reverse camera,  
Bluetooth, cruise control

were \$19,995

NOW

**\$18,995**

FINANCIAL  
SERVICES



### 2007 HONDA ODYSSEY

2.4L, auto, tints,  
auto headlights,  
bluetooth.



Was  
\$11,990 NOW **\$6,995**

**6.95%  
INTEREST\***

### 2006 TOYOTA PREVIA

2.4L, auto, 7 seater,  
very popular, great  
colour.



Was  
\$8,990 NOW **\$6,950**

**6.95%  
INTEREST\***

### 2006 TOYOTA CALDINA ZT

2.0L, auto, tints,  
alloys, only  
98,000kms.



Was  
\$11,990 NOW **\$9,990**

**6.95%  
INTEREST\***

### 2009 TOYOTA RACTIS

1.5L, auto, nice  
alloys, tints,  
sporty.



**\$9,995**

**6.95%  
INTEREST\***

**FREE  
WARRANTY**

### 2013 TOYOTA PRIUS

1.8L, auto, HYBRID,  
awesome  
alloys.



Was  
\$17,990 NOW **\$16,250**

**6.95%  
INTEREST\***

### 2018 TOYOTA YARIS SX

1.5L, auto, only  
10,500kms,  
alloys.



Was  
\$19,990 NOW **\$19,495**

**6.95%  
INTEREST\***

### 2015 TOYOTA COROLLA ZR

1.8L, auto, alloys,  
tints, smart  
looking.



Was  
\$26,990 NOW **\$23,990**

**6.95%  
INTEREST\***

### 2017 TOYOTA AURION AT-X

3.5L, auto, V6,  
airbags, alloys,  
parking sensors.



Was  
\$27,990 NOW **\$25,990**

**6.95%  
INTEREST\***

### 2016 TOYOTA RAV 4 GXL

2.5L, auto, only  
53,300kms.



Was  
\$29,990 NOW **\$27,990**

**6.95%  
INTEREST\***

### 2018 TOYOTA PRIUS SX

1.5L, auto, HYBRID,  
demonstrator,  
push button  
start.



**\$28,490**

**6.95%  
INTEREST\***

### 2014 TOYOTA HIGHLANDER GXL

3.5L, auto, tints,  
4WD, only  
102,000kms.



Was  
\$34,990 NOW **\$31,990**

**6.95%  
INTEREST\***

### 2019 TOYOTA C-HR LTD

1.2L, auto, turbo,  
demonstrator,  
petrol, alloys,  
tints.



**\$34,495**

**6.95%  
INTEREST\***

### 2016 LEXUS RX 350

3.5L, auto, F-Sport,  
only 41,000kms,  
stunning.



**\$69,990**

**6.95%  
INTEREST\***

### 2015 NISSAN NAVARA DX

2WD, manual, tuff deck,  
towbar, tonneau  
cover.



**\$16,990**

**6.95%  
INTEREST\***

### 2010 TOYOTA HILUX SR5

3.0L, auto, turbo  
diesel, 4WD,  
side rails,  
tints.



Was  
\$27,990 NOW **\$25,990**

**6.95%  
INTEREST\***

### 2013 TOYOTA HILUX

3.0L, turbo diesel, manual, 4WD,  
full service history,  
only 77,000kms.



**\$31,990**

**6.95%  
INTEREST\***

### 2015 TOYOTA HILUX

3.0L, turbo diesel,  
tints, roof racks,  
snorkel,  
canopy.



**\$35,990**

**6.95%  
INTEREST\***

### 2015 TOYOTA HILUX SR5

3.0L, auto, petrol,  
diesel, 4WD,  
canopy.



**\$35,990**

**6.95%  
INTEREST\***

### 2018 TOYOTA HILUX SR5

2.8L, manual, turbo,  
diesel, 2WD, only  
15,000kms.



Was  
\$39,990 NOW **\$37,490**

**6.95%  
INTEREST\***

### 2017 TOYOTA HILUX SR5 TRD

Alloys, TRD grill,  
2WD, hardlid,  
sports bar.



**\$37,990**

**6.95%  
INTEREST\***

### 2017 TOYOTA HILUX SR5

2.8L, turbo, diesel,  
alloys, 2WD, hardlid,  
side steps.



**\$38,990**

**6.95%  
INTEREST\***

### 2018 TOYOTA HILUX SR

2.8L, auto, turbo,  
diesel, 4WD,  
bluetooth.



**\$47,500**

**6.95%  
INTEREST\***

### 2015 NISSAN VANETTE NV200

1.6L, auto, petrol,  
tints, dual sliding  
doors, reverse  
camera.



**\$15,990**

**6.95%  
INTEREST\***

### 2011 TOYOTA HIACE

3.0L, auto, turbo,  
tints, very tidy,  
nudgebar.



**\$25,990**

**6.95%  
INTEREST\***

### 2013 TOYOTA HIACE

3.0L, auto, turbo  
diesel, 10 seat  
minibus.



Was  
\$34,990 NOW **\$29,990**

**6.95%  
INTEREST\***

6.95% ON ALL USED CARS WITH A 36 MONTH TERM. \* Lending criteria and other conditions apply. Only available until 31 August 2019

GUYTON STREET, WANGANUI

Phone 06 348 8850

www.wanganuitoyota.co.nz

Open: Monday - Friday 8am-5pm  
Saturday 9am-3pm  
Sunday by appointment

After hours  
contact....

Wayne Brougham  
027 326 7211

David Gibson  
0274 759 650

Richard Nessling  
0273 488 859



FINANCIAL  
SERVICES





## Whanganui Regional Museum Spring Lecture Series starts next month



Whanganui Regional Museum

The first of the Whanganui Regional Museum Spring Lecture Series, running on Thursday early evenings in September and October, starts on September 5. The lectures are from 5.30 to 6.30pm. All welcome. Free entry - koha always appreciated. Refreshments provided. The venue is the Davis Theatre Watt Street.

### September 5: New Wine in Old Bottles: Adaptive Use for Built Heritage in Whanganui

Whanganui Regional Museum Director, Frank Stark, gives some examples of successful building re-use projects and speculates about the future.

### September 12: Good Mourning

Whanganui Regional Museum Communications Coordinator, Rachael Garland, presents an overview of Victorian-era mourning culture encompassing costume, memento mori and ephemera.

### September 19: A Pūtiki Tour Through Time

Whanganui Regional Museum Public Programmes Presenter, Lisa Reweti, takes us on an oral history and pictorial tour

of her tūrangawaewae, Pūtiki, where she belongs through whakapapa (kinship).

### September 26: The 80th Anniversary of the Beginning of World War II

Whanganui Regional Museum Senior Curator, Libby Sharpe, acknowledges the anniversary of 1 September 1939 when war was declared and gives an overview of the effects on Whanganui of this new horror, from home and abroad.

### October 3: Good Books: Sacred Texts in the Museum Collection

Whanganui Regional Museum Archivist, Sandi Black, examines the religious texts held in the Museum collection and the history of religious publication.

### October 10: Guided by Stars - Wayfinding of our Ancestors

Whanganui Regional Museum Kaitiaki Taonga Māori and Kaiwhakaako Māori, Āwhina Twomey, dispels the myths and reveals the truths about Pacific voyaging.

### October 17: Tuna and Piharau

Lee Rauhina-August from NIWA outlines the issues facing New Zealand's culturally significant eel and lamprey species and the importance of restoring their freshwater habitat.

land's culturally significant eel and lamprey species and the importance of restoring their freshwater habitat.

### October 24: A Nice Day for a Wedding

Whanganui Regional Museum Collection Manager, Trish Nugent-Lyne, showcases the wonderful wedding dresses in the Museum collection and in our wider community. She discusses how they contribute to our knowledge of cultural and family history in Whanganui.

### October 31: The Whanganui Arts and Crafts Movement 1890-1939 - How it could define Our Place Today

Historian and Building Heritage Advocate, Scott Flutey, presents an architecturally affirmative lecture about how the Arts and Crafts Movement influenced the styling of Victoria Avenue. Why is this identity so important to our current streetscape?

This lecture will be followed by an open discussion chaired by Museum Director, Frank Stark. It will encompass how we view Victoria Avenue now and in the future. Supper will be served afterward.

Note that this session is from 5.30 to 7.30pm.



## GONVILLE LIBRARY'S 10th BIRTHDAY

Saturday, 31 August - 2pm  
Gonville Centre, 44 Abbot Street, Whanganui

Children's Entertainment • Free Sausage Sizzle • Hot Drinks / Snacks  
Prizes for Best Dressed Book Character

## All welcome to join Gonville Library celebration of 10th birthday this Saturday

Gonville Library – along with its co-tenant and community partner, Gonville Health – is gearing up to celebrate its tenth birthday. Everyone is welcome to join the celebration at the Gonville Centre, 44 Abbot Street, on Saturday, 31 August at 2.00pm.

Children are invited to dress up as their favourite book character, with prizes for the best dressed. There will be a free sausage sizzle, free vegetarian sandwiches, children's entertainment and a birthday cake. The library will stay open through the afternoon, with hot drinks and snacks available for purchase from the counter as usual.

Whanganui District Library Frontline Services Manager, Nicholas Keene, says this is an opportunity to acknowledge all those who have invested their time and expertise into the success of the Centre and to discuss hopes and plans for the future.

Mr Keene says the Gonville Library is a special place. "For ten years this small library has been providing locals with access to the latest books, audiobooks and magazines, as well as a welcoming environment for locals to meet and groups to come together. "More than half a million visits and a quarter of a million books issued tells its own story," Mr Keene says.

The library has been undergoing refurbishment in the past year, with a new front counter, shelving and furniture. Some features remain the same though – notably the expansive table, formerly Waitotara County Council's meeting table, resurrected from a Council store when the Gonville Library was built.

"We have taken a thoughtful approach to the renovation, where we have updated the look but kept the things people love, such as the popular table," Mr Keene says.

The manager of Gonville Library, Kat Schroyens, says she loves nothing more than "seeing book and games

clubs rubbing shoulders with knitting groups and Tai Chi practitioners, with the smell of great coffee always in the air".

Ms Schroyens says she is always looking for new ways for the Gonville Library to benefit the community. Library staff have recently been trained to sign families up for Spark Jump affordable internet and are also facilitating workshops that help people better understand how to use online banking and recognise and avoid online scams.

The Gonville Library will be open as usual from 10.00am on Saturday, 31 August and the party will kick off at 2.00pm.

Children's Librarian, Becky Stanley, invites kids to dress as their favourite book character for the party



## HAKEKE STREET

# Saturdays are here at last!

The Hakeke Street Library & Community Centre will be opening on Saturdays from 14 September to 2 November.

Special Whanau and Arts days for the whole family and community to enjoy; sausage sizzles, face-painting, story-times, hole-in-one, spot prizes, bouncy castles and more!

Watch this space and our facebook for more details!



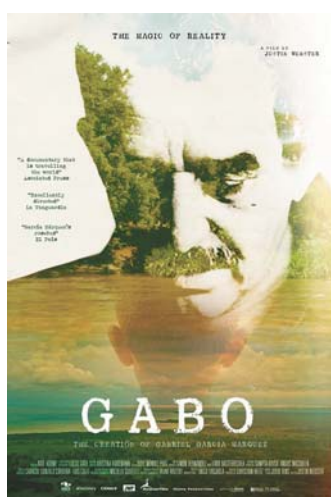
whanganuilibrary.com

## Opening film for the Latin America and Spain Film Festival

The opening film for the Latin America and Spain Film Festival in Whanganui is 'Gabo, the Magic of Reality', a documentary based on the life of the Colombian writer, Garcia Márquez. It tries to answer the question, "How did a boy from a backward town on the Caribbean coast become a writer who won the hearts of millions and whose works changed our perception of reality?"

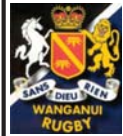
Produced in 2015, this 90 minute documentary, directed by Justin Webster, presents how the political struggles of Latin America in the 70s and 80s influenced Garcia's work, creating amazing masterpieces such as 'One hundred Years of Solitude,' but also strong testimonials of Colombia's contemporary history in 'News of a Kidnapping'.

It includes testimonials by family members, friends, co-workers, journalist and writers, who explore the significance of Garcia's journalistic writings, his personality and his perception of reality.



It screens at the Davis Theatre on Thursday, September 5 at 7pm. Entrance is free.





# Steelform Wanganui vs Thames Valley

Saturday, 2.30pm, Cooks Gardens



THINKING ROOFING?

**THINK WANGANUI  
STEELFORMERS**

- \* Cut to length
- \* Fast and efficient
- \* Long run roofing
- \* 4 Profiles available
- \* Free no obligation quote

**COLORSTEEL®**

**Zincalume®**

**Proud supporter of WANGANUI RUGBY.**

**STEELFORM**  
Wanganui Steelformers Ltd

380 Heads Road,  
Wanganui  
Ph 344 5142 or 344 4159  
Fax 344 6766  
or 0800 800 077

## First home game of the season with Wanganui vs Thames Valley

With seven Wanganui and Thames Valley players away with the New Zealand Heartland team in Auckland this weekend there will be extra pressure on the two champion sides at Cooks Gardens on Saturday.

The Valley Foxes upset defending champions Steelform Wanganui, 17-7 in the Mitre 10 Meads Cup semi-final here last season, carrying on to beat South Canterbury 17-12 in Timaru for a first Heartland title.

The Cooks Gardens victory over the unbeaten

Butcher Boys ruined the hopes of a four-peat winning sequence for the blue and blacks and was hailed nationally as the upset of the championship season.

It was also the second time that the Swamp Foxes had locally deprived Wanganui of a national title and ruined an unbeaten Wanganui record for the season.

The first occasion was in 1988 when Valley won 31-12 at Spriggins Park in what was the virtual final of the NPC Div. 3 round-robin championship.

The Foxes have only

snared three victories in 19 visits to Wanganui and won four times at home in 35 fixtures between the two unions since 1923.

Now they are back again in a bid to score back to back victories at Cooks Gardens.

Both teams were on the receiving end of surprise opening day defeats in the 2019 Heartland qualifying series last weekend – Wanganui losing the Bruce Steel Memorial Cup 18-28 to the Wairarapa-Bush Stags in Masterton and Valley losing 15-17 against Poverty Bay at Paeroa.

To make it a memorable start to the new season, when all four 2018 Meads Cup semi-finalists were beaten, South Canterbury lost the Hannan Shield 20-26 at home to North Otago and King Country crashed 27-56 away to West Coast.

It is the first time in the 14-year history of Heartland rugby that all four Meads Cup semi-finalists were beaten in the opening round the following season.

This has been a set-back for the Top Four 2018 unions and adds a lot more interest for two of them who meet here this weekend, especially with seven top players missing from the game.

Wanganui is without backs Lindsay Horrocks, Craig Clare and Penijamini Nabainivalu plus flanker Campbell Hart while Valley provides winger Harry Lafiuane, lock Brett Ranga and hooker Glen McIntyre to the national side.

Their absence will fully test the strength of reserves in the two squads and could open up opportunities for the fill-in players.

The quartet of Wanganui missing players have repped 124 times for the union and Valley's trio

have had 84 rep caps.

Although well beaten 62-12 by Auckland B in a pre-season match, the Swamp Foxes turned in a good Ranfurly Shield challenge against Otago, finally losing 21-41.

It was the most points any Heartland team has scored in 29 shield games since 2006 and matched the lowest losing margin (20) recorded by Wanganui (12-32) against Waikato at Cambridge in 2016.

The Valley forward pack has received technical advice from a French hero, hooker and ex skipper, Raphael Ibanez, this season.

He played 98 tests for the French and helped them twice upset All Black World Cup teams. Under his leadership France won the 1997 and 1998 Grand Slam titles and reached the 1999 World Cup final.

The most capped Valley squad member is 38-year-old utility back, Lance Easton (76 caps) who has scored 97 points for the union. Tallest player is 1.95m lock, Keegan Lewis and heaviest is 134kg prop, Sergio De La Fuente.

The Foxes have three loan players – Waikato prop, Nico Aandewiel, Bay of Plenty loose forward, Matty Axtens and Bay of Plenty mid field back, Danny Kayes.

Three quarter, Jason Laurich who has repped 22 times for the union, is a player of origin from Auckland.

Gloucestershire-born first five Reece Boughton, who kicked 11 points against Otago and has 102 points from a dozen games for Valley, is a former professional player.

– John B Phillips



**MITRE 10  
HEARTLAND  
CHAMPIONSHIP**

**SATURDAY 31 AUGUST**

**COOKS GARDENS**

1pm

**Wanganui Under 14s vs Horowhenua-Kapiti Under 14s**

2.30pm

**Steelform Wanganui vs Thames Valley**

Get your supporters T-Shirts NOW from the Wanganui Rugby Union Office, wear them on game day and get your ticket at half price!

GATES OPEN: 12.00pm

Gate Prices -

Adults - \$10.00

Students & Gold Card - \$5.00

Children 13 & Under - Free

Family Passes -

2 x Adults & 2 x Students - \$25.00

2 x Adults & 2 x Children 13 & Under - \$15.00



Everybody has a ball!



Suppliers / Fabricators and Welders of  
**Aluminium, Steel and Stainless Steel**

- Sheetmetal Workshop
- Waterjet Cutting
- Machining
- ASMI Certified Welders
- Factory and Field Maintenance
- Preventative Maintenance

**Designer / Draughting Autodesk Inventor**

Call us on 06 344 4108

or drop into ELITE

at 437 Heads Road, Wanganui  
enquiries@eliteengineering.co.nz

Proud  
supporters of  
**Wanganui  
Rugby**



# Victorian London a creative context for two Literary Festival authors

# Free one-hour courses start Monday for Festival of Adult Learning

Using Victorian England as a backdrop for their work is hardly a new practice for New Zealand writers but Albert Belz's play 'Yours Truly' certainly took it to a new level. 'Yours Truly' is set in London of 1888, the so-called "Autumn of Terror" when Jack the Ripper was committing his ghastly murders and people were fearful of being out in the streets at any time after dark.

Albert Belz is one of our invited authors for this year's Whanganui Literary Festival. When asked as to why he chose Victorian England as a context for his play, he replied, "Initially I read a graphic novel by Alan Moore called From Hell. I became obsessed with the Jack the Ripper theory it was based on..... what really drew me towards it was themes of wealth, poverty and the exploitation of the most vulnerable that allowed Jack the Ripper to never be caught".

The characters in the play are based on real people who existed at the time in Whitechapel, East London. Mary Kelly, the prostitute, was particularly at risk from becoming another of Jack the Ripper's victims. The story is well enough known that the audience themselves are fearful of Mary's destiny and it is this identification with the need to earn a living and the various risks that are inherent within this that help to bridge the gap between

East London of the 1880s and New Zealand in the 21st century.

Belz's play is not based on conjecture. He studied the topic to the point of knowing everything there was to know about the Jack the Ripper case. "I did a lot of research. My flatmate at the time and I spent about a week pouring through screeds of info on the period and on the crimes, determined to discover who the Ripper was. We eventually came to the conclusion that obsession is very, very unhealthy".

Another invited author to the Whanganui Literary Festival is Tina Makereti. Much of her latest novel, 'The Imaginary Lives of James Poneke' is also set in Victorian England. Like Albert Belz, Makereti has based her novel on a true story but, unlike Albert, her novel is a work of fiction, the plot very loosely based on the many Maori who took the opportunity to travel to England in the 1800s. James becomes an object of curiosity in London 1846 as he finds himself on display in the London Exhibition Hall, a living artefact to enhance his benefactor's paintings of Maori scenes on a recent trip to colonial New Zealand.

Talking about his own work, Albert Belz makes the observation that, "themes of colonisation and exploitation are millimetres from the surface in New Zealand and that one barely has to try to discover them". This question of exploitation of



Albert Belz



Tina Makereti

the unguarded in society – whether it be in 1846 or 1888 or 2019 – remains a relevant one to explore and to confront for both writers and readers alike.

Albert's session for the Literary Festival is on Saturday, 5 October at 10.00am and Tina's is on Sunday, 6 October, at 11.30am.

Starting on Monday 2 September, the Whanganui Learning Centre Trust (WLCT) is hosting a range of free events for the annual Festival of Adult Learning. Everyone is welcome to attend any or all of the sessions with just a koha (donation) for entry.

Monday 10-11am sees Lydia Harris share how she and her family of four managed to opt out of purchasing groceries for an entire year! That was back in 2017 and since then she hasn't looked back. Volunteer service abroad has brought her new ideas and determination.

Following the theme of self-help options, Anna-Mae Toa offers a "Make and Take" session from 1pm-3pm Monday afternoon where participants make herbal teas and bath salts. In similar vein, Sharon Semple from the Peoples' Centre has volunteered to talk to anyone needing advice and information when accessing Government agencies such as Work and Income and IRD (Tuesday 3 September, 1-3pm).

There are two self-empowerment events on during the week as well. On Tuesday, 10-11am, Emma Dickinson will share a taste of yoga with you—so be prepared and wear active wear. Kyle Gallacher also offers his experience in relaxation techniques through breathing exercises and guided meditation on Thursday 5 September, 10-11am.

Music, craft, food and

stories from the Cook Islands, Niue, Fiji and Samoa is an 11am-3pm offering next Wednesday at WLCT with Kiritahi Firman, a guest speaker. As a follow-up of sorts, there is a Pasifika Whakapapa Quilt-Making weekend beginning Friday 4.30pm. With limited spaces, you do need to enroll for this and there is a small entry fee of \$10.

Dr Nelson Lebo from the Eco School shares three areas of interest with us on Wednesday afternoon, 4 September. In his 3.30-4.30pm slot he looks at small backyard gardens followed by another hour talking about basic care for your fruit trees. Taking up Lydia's concern of

reducing plastic waste at home, his 6.30-7.30pm slot will also be devoted to more ways to divest ourselves of a reliance on plastic.

Last but by no means least, Lee Williams invites you to her korero, Friday 1-3pm. Here, she shares her journey from costume design for the movie "River Queen" to working on numerous projects at Wheta Workshop. From 2-3pm she also wants us to experience the beautiful yet haunting sounds of traditional Maori instruments with us in "Taonga Puoro".

The Whanganui Learning Centre is located at 232 Wicksteed Street. Come and learn something new. All welcome

**THE WHANGANUI LEARNING CENTRE**

invites you to its

**FESTIVAL OF ADULT LEARNING**

**Monday - Sunday**  
SEPTEMBER 2 -- 8

See the advertorial in this edition of River City for events and times or see our Facebook page. You can also phone 348 4950 for more information.

**ALL EVENTS KOHA ENTRY**

**232X Wicksteed**  
Whanganui Learning Centre

## BE QUICK - SALE ENDS THIS WEEKEND

**10 TOYOTA COROLLA**  
1.8L, auto, very tidy vehicle, great saving on this!

Was \$9,995

**\$6,990**

**07 TOYOTA WISH**  
1.8L, auto, tints, 7 seater, very popular and tidy.

Was \$9,995

**\$6,990**

**05 TOYOTA CALDINA ZT**  
2.0L, auto, alloys, tints, very popular vehicle.

Was \$9,995

**\$6,990**

**05 TOYOTA VITZ RS**  
Auto, alloys, tints and sporty!

Was \$9,995

**\$8,990**

**09 TOYOTA VITZ**  
Economical, great colour, tidy.

Was \$9,995

**\$6,990**

**06 SUBARU LEGACY**  
3.0L, auto, 4WD, alloys, tints.

Was \$9,995

**\$7,990**

**06 TOYOTA CAMRY**  
2.4L, auto, spoiler kit.

Was \$7,995

**\$6,995**

**06 KIA CERATO**  
1.6L, manual, diesel, alloys, great colour.

Was \$7,995

**\$6,490**

**05 TOYOTA WISH**  
2.0L, auto, tints, 7 seater, popular.

Was \$9,995

**\$7,990**

**04 HONDA ODYSSEY**  
2.3L, auto, tints, 7 seater and sporty.

Was \$7,995

**\$5,990**

**05 TOYOTA COROLLA FIELDER**  
1.5L, auto, tints, very tidy.

Was \$9,995

**\$7,990**

**09 TOYOTA RACTIS**  
1.3L, keyless start, very tidy car.

Was \$9,995

**\$7,990**

**09 HONDA CIVIC**  
2.0L, auto, alloys nice and tidy.

Was \$9,995

**\$8,990**

\*\* Sale prices available until end of August 2019



Ph 06 281 3298 • 31 Heads Road, Wanganui  
Uyynn 027 444 0507

**\* FINANCE AVAILABLE**  
\* Conditions apply - Vehicles on special are not eligible for the \$2000 Minimum Trade Deal.



# SADD

STUDENTS AGAINST DANGEROUS DRIVING



# STUDENTS A DANGEROUS

## Student solutions to shocking New Zealand road toll

From an artwork of 227 hearts symbolising the number of deaths on New Zealand roads so far in 2019, to challenging people to navigate an obstacle course while distracted – students across the country are coming together this September to highlight important road safety issues. Students taking part in SADD's (Students Against Dangerous Driving) SAFER September campaign hope their activities – some of which involve community partners such as NZ Police – will influence all New Zealanders to drive safely and make an impact on reducing road trauma. SADD National Leader, Ben Bonne, a year 12 student at Albany Senior High School where the heart artwork has been created, says they want to raise awareness of road safety issues throughout their community. "September is a very busy time of the year

and we want to empower every single New Zealander to be safe on our roads. By working together and raising awareness, we can make a significant positive difference and help reduce our large road death toll," Ben says. SADD National Leader, Holly Friedlander, a year 12 student at Columba College in Dunedin, says of SAFER September: "For me the SADD message is so valuable and it has been super rewarding thinking of new innovative ways to promote what it stands for to my school and community. The activities we have planned are a variety of fun and serious and we hope that SADD's values will be able to reach everyone in an individual way while spreading awareness." As of August 25 this year, there had been 11 road deaths among 16 to 19-year-olds – a drop of nearly 50% of deaths for the same period in the past four



Albany Senior High School's artwork with students. From left: Emily Caldeleri-Hume, Jess Darnley, Ben Bonne and Ayla Cathro

years. However, young drivers are still over-represented in some areas – for example, of fatal crashes involving cell phone use in the last five years 30% have featured a 16 to 19-year-old driver. SADD National Manager, Donna Govorko, says she's really impressed with the SADD groups' efforts to make a difference to these statistics.

"Having experienced the tragedy of road crashes first-hand as a police officer, it is heartening to experience the passion our SADD students have to help influence all New Zealanders to be safe on our roads.

"I also applaud the students' aspiration to help prepare their peers to be safe on our roads heading into summer and the end of the school year." AA Policy and Research National Manager, Simon Douglas, says the AA is right behind SADD and SAFER September.

"Seeing the number of deaths among young people nearly halve so far in 2019 is heartening, but at the same time young people are still getting hurt in ways

that can be prevented, like not wearing seatbelts, driving too fast for conditions, being drunk or drugged behind the wheel and using a phone featuring in so many deaths.

"These messages aren't just for teens. We can all do more to be safer on our roads in September, and from then on, to help reduce these devastating crashes." SADD charitable trust

is still going strong more than 30 years after it launched in New Zealand and has a presence in 75% of secondary schools, reaching more than 220,000 young people every year. SADD delivers against its vision through its student National Leadership Programme and its larger student membership. SADD works closely with New Zealand Transport

Agency, New Zealand Police and New Zealand Automobile Association

as well as maintaining strong links with local authorities.



On behalf of our students and their families we support

**STUDENTS AGAINST DANGEROUS DRIVING**

LEARNING • INTEGRITY • FELLOWSHIP • EXCELLENCE

**Wanganui Motors**

We are proud to support Students Against Dangerous Driving

82 Ridgway Street | Wanganui  
www.wanganuimotors.co.nz  
www.wanganuimotorsford.co.nz  
**Ph 06 349 0930**

**REPAIRS OF SAGGING HEADLINERS RIPPED & TORN CAR SEATS**

**Shaun Terrey**  
MOTOR TRIMMERS & UPHOLSTERY

p: 06 347 2114  
m: 027 275 0833  
e: shaun.terrey@slingshot.co.nz  
w: www.shaunterrey.co.nz  
11 Purnell Street, Wanganui 4500

**COOPER TYRES**

"Your Local Tyre Guy"

**Proud to support SADD**

Phone 343 8706  
191 Somme Parade, Wanganui

**CULLINANE COLLEGE**

Proud to support Students Against Dangerous Driving

Cullinane College, A school where children can learn to be successful in both Life and Faith.

Enrolments for 2019 are now being accepted. Call us on 349 0105 to request your information pack today.

15 Peat Street, Wanganui







# AGAINST SADD DRIVING



STUDENT ADVOCATES FOR  
EVERYONE'S ROAD SAFETY

## SADD's 6 principles



### 1. Sober Drivers

Over the last 5 years there has been a 60% drop in the number of drink drivers detected under the age of 20. The introduction of the zero-tolerance alcohol policy for drivers under the age of 20 has contributed to this. Sadly, it is still a leading cause of death and serious injury on our roads.

### 2. Safe Speeds

Speed has been a factor in more than

half (53%) of the fatal crashes involving young people. At 60kph it will take you 37m to come to a complete halt, whereas at 50kph the distance is only 28m. It's a limit not a target.

### 3. No Distractions

Younger drivers have the highest rate of distraction-related fatal and serious injury crashes. Research has found if you have your eyes off the road for three seconds or longer

you are 24 times more likely to crash.

### 4. Avoiding Risks

15-19 year olds are 7 times more likely to be involved in a crash than their parents. This is because they underestimate risky situations and don't spot potential hazards. Research shows that parts of the brain that assess risk and control impulses continue developing into a person's early twenties.

### 5. Driving to the Conditions

NZ can have some challenging weather conditions. Even light rain can affect visibility. Currently, three young

drivers every year are killed and 200 more injured due to the effects of adverse weather conditions. When roads are slippery there is less friction. This means your vehicle takes longer to stop and it is easier to lose control.

### 6. Building Experience

There is no greater reducer of crash risk over time than experience. Research has found that young drivers who clocked up 120 hours or more of supervised driving practice had a 40% reduction in crash risk. Yet, on average, learner drivers in New Zealand clock up less than 50 hours.

## Preparing for your full licence: the AA Driving School difference

- By Jayson Coneybeer,  
Whanganui AA Driving  
Instructor

At AA Driving School, we don't just teach learner drivers how to pass their tests, we help drivers at all levels to develop safe driving habits that will help to make the roads safe for all road users. Born and raised in Whanganui, I worked as a truck driver for several years before becoming an AA Driving School Instructor. Being behind the wheel of large trucks weighing thousands of kilograms required a high level of competency and necessitated being extremely safe and courteous at all times. It also gave me the opportunity to get to know New Zealand roads and their challenges really well. Deciding I wanted to use my skills and knowledge to help others with their driving, I chose to join AA Driving School because of its strong culture of professional development. I, along with my Driving School colleagues – many of whom have also worked as professional drivers or with organisations such as NZ Police – regularly undergo training and assessments to ensure the instruction we're delivering meets AA Driving School's high standards. Now, with more than 15 years' experience on our roads as a truck driver and then driving instructor, I relish helping others develop safe driving habits for life. It is recommended new learner drivers have around 120 hours

of supervised driving experience before taking the restricted licence test. We strongly encourage taking professional lessons from the get-go so drivers practice the right things from the start. To help with this, the AA offers three free driving lessons to AA Members, or drivers who have a family member who is an AA Member and have had their learner licences for less than a year via AA Ignition. Learning doesn't stop then – the first six to 12 months driving alone are the most risky for teenage drivers. A great way to continue learning is through taking a Defensive Driving Course with AA Driving School. These help drivers to become more knowledgeable,

able, aware and responsible, and they have the added bonus of reducing the time required to be on the restricted licence. For drivers under 25 the time decreases from 18 to 12 months, while for drivers 25 and over, the time drops from six to three months. When my students successfully pass the full driver licence, it's really satisfying to hear how grateful they are – not only that I've helped them to pass, but also that I've given them the confidence to be safe drivers on our roads. If you're learning to drive, or would simply like to take a lesson to check in on your driving, contact Jayson to book a lesson on 022 080 6257.

**AMT**  
Auto Electrical Ltd

Proud to support  
**SADD**

Phone: 06 345-5992  
Mobile: 021-215 6889

Address: 191 Guyton Street, Wanganui  
Email: amtautoelectrical@gmail.com  
Business Hours: 8.00am to 5.00pm

**River City Cabs 1996 Ltd**  
Proudly supporting SADD

Book your next taxi with  
**smarHAIL**  
Download the app on your phone NOW!

VANS - MOBILITY - SEDANS - HYBRIDS  
LUGGAGE TRAILER - CHILD CAR SEATS

**PH: 0800 345 3333**  
12 Hardy Street, Wanganui

**The home of the \$45 WOF**

**TOYOTA**  
WANGANUI TOYOTA  
Local, Loyal & Loving-it!

We are proud to support  
**SADD**

GUYTON STREET, WANGANUI  
Phone 06 348 8850  
www.wanganuitoyota.co.nz

**Panel Fix**  
**QUALIFIED PANEL BEATER**

Proud to support  
**SADD**

Rust removal •  
Restoration •  
Crash repairs •

**DAVID HOVEY**  
22 Churton Street, Wanganui  
office@panelfix.co.nz ph 06 347 7759 www.panelfix.co.nz







## ~ Daffodil Day - a month of activities ~

Daffodil Day is this Friday, August 30 but the Cancer Society has been busy all month in a variety of ways with different daffodil day fundraisers.

Counter boxes were delivered to 100 businesses complete with silk daffodils and their popular cancer pens. Last year the boxes raised \$4000.

The Daffodil Day pop-up shop was opened for August on the Avenue in the old Pumpkin Patch shop and Jane Beamsley, Manager at the Cancer Society says, "It is likely to be our best, most successful year for the shop, thanks in part to the location but also to the experience and enthusiasm of the volunteers."

They had a lot of good quality donations

with a considerable amount of new items as well as big items such as beds and sofas. The shop itself is larger than their normal shop and is light and bright. Jane says "We are very grateful to Nigel Auret for allowing us to use it free of charge." Last year the shop brought in \$17,000 and that figure has already been met this year.

On Friday, August 30, there will be a garage sale at the shop from 10am to 1pm. There will be nothing priced over \$5. A chance to get a real bargain.

Last Sunday, the Vintage Car Club organised the now annual Daffodil Car Rally. There was "a fantastic turnout" of around 120 cars and more funds were raised through a raffle and

from donations on the day. A highlight was the number of cars doing a 360° turn around the Watt Fountain – partly to earn extra points.

Yet another community fundraiser has been a number of local restaurants making a contribution over August. The St Johns Club donated \$5 from every chicken meal sold, the Country Café and Playground donated the proceeds from the sale of cupcakes and Fitzies made daffodil cupcakes and donated the sale proceeds. Vivo Hair Salon ran their own raffle with prizes worth \$300.



Gillian White, Jane Burgess and Kerry Dewson-Pratt wrapping daffodil bunches.

## Pre-orders for Daffodil Day

Many local businesses pre-ordered exclusive Cancer Society merchandise. These included the well-known Cancer Society bears. Each year for up to 15 years, a different Daffodil Day Teddy Bear has been produced, with collectors buying one each year. This year the bear's name is 'Simmons' – and he will be the second last one to be produced as next year will be the last for the bears. They cost \$10.

Other Cancer Society merchandise includes a 2020 calendar at \$10, pens at \$2, tote bags at \$6 and eco wind mills at \$2 (put together by Cancer Society Staff). These pre-orders to nearly 90 businesses,

were delivered on Tuesday thanks to the Vintage Car Club, and organised by Frank James from the Club. Before Daffodil Day

itself, the Society was able to pick daffodils from gardens and farms of locals. About 400 were supplied this way.



We are proudly supporting  
**Daffodil Day**

**ph 06 344 5153**  
**fax 06 344 5110**

**376 Heads Road, PO Box 844,**  
**Wanganui 4540**

[admin@wwconstruction.co.nz](mailto:admin@wwconstruction.co.nz)



Pleased to support **Daffodil Day**

**Telephone 344 4025**

**42B Fitzherbert Ave, Wanganui**



**SILKS AUDIT**  
Chartered Accountants

156 Guyton Street, Whanganui  
Phone 06 345 8539  
[www.silksaudit.co.nz](http://www.silksaudit.co.nz)



**Jackson's**  
**Flooring Design**

*Service and Excellence You Can Trust!*

Pleased to support **Daffodil Day**

Corner of Wilson & Ridgway Streets

**P 06 345 9059 • [whanganui@flooringdesign.co.nz](mailto:whanganui@flooringdesign.co.nz)**



**PROTECTING**  
**PEOPLE WITH**  
**THE BEST**  
**SAFETY GEAR.**

**FROM**  
**WHANGANUI**  
**TO THE WORLD.**

PACIFIC HELMETS NZ LTD IS PART OF THE  
PACIFIC SAFETY INTERNATIONAL LTD GROUP

**WELCOME**  
**TO FAITH**  
**CITY**  
**CHURCH**  
A PLACE FOR YOU

**BUILDING ON CHRIST**

**BONDING IN HIS LOVE**

**BLESSING THE FUTURE GENERATIONS**

**SERVICE DETAILS**  
127 SPRINGVALE ROAD 8.30AM - 10.30AM • 6.30PM

web: [fcc.net.nz](http://fcc.net.nz)  
phone: (06) 345 2065  
email: [office@fcc.net.nz](mailto:office@fcc.net.nz)





## Bouquet of the Week

This week's bouquet went to over 20 volunteers at the Cancer Society's Pop-Up shop. The Cancer Society Manager said, "The shop is likely to bring in record funds for our work and that is thanks to not only the generosity of the community in providing donations, but also and just as importantly, to the enthusiasm and happy approach of the volunteers."

Lynette Sanders and Shirley Delimere received the bouquet on behalf of all their colleagues and the flowers have remained at the shop through the week for everyone to enjoy. The beautiful bouquet was put together by Nicola and her team at the Flower Room, an Inter Flora Top 20 Club member.

They also received a voucher for lunch for two at the Grand Irish Pub and Lynette and



Lynette and Shirley – Cancer Society Shop volunteers

Shirley agreed that a group of them will enjoy

lunch together, using the voucher to subsidise the cost for all of them.

*Please give generously to this worthy local cause*

**C.J. Plumbers LTD**

*Pleased to support Daffodil Day*

Contact: Graham James

Mobile 027 445 7218

After hours 344 5713

## The contribution of the ANZ - principal sponsors

The local ANZ staff have joined in the fundraising venture on behalf of the Cancer Society with impressive enthusiasm. On Thursday, August 29 at 4pm, three staff members will be having their heads shaved. They are Andrea Heckling, Scott Carson, who might just be getting his beard shaved off as well and Toby Wells, known for his "very long hair". They have been raising funds for the last month with a degree of competition between them. Sam from Monahans Barber Shop, will be doing the honours.

On Friday there will be the last theatre showing in Whanganui of "The Lion King," arranged by the ANZ with all funds going to the Cancer Society. Tickets are available from Embassy 3.

At lunch time on the Friday, ANZ staff will be at Majestic Square cooking sausages and meat patties for another fundraiser.

The Cancer Society is grateful to the ANZ for all their support.



**Winner of 19 National Pie Awards**

**2019 Bakels NZ Supreme Pie Awards Vegetarian Category Silver Medal for our Vegetarian BBQ Cheeseburger**

We are proud to support **DAFFODIL DAY**

**Butchart's HOME COOKERY**  
"NZ Top 10 Pie-maker"

Off Heads Road, Corner 87-91 Tawa St & Kings Ave  
TREAT YOUR TASTE BUDS WITH BUTCHARTS

**KATE JOBLIN & CO LTD**  
CHARTERED ACCOUNTANTS



xero

Proud to support **Daffodil Day**

CHARTERED ACCOUNTANTS  
AUSTRALIA & NEW ZEALAND

T: 06 348 7000  
E: hub@teamkj.nz

**Kiwi SPANNZ**  
NEW GENERATION BUILDINGS

136 Guyton Street, Wanganui

**Bruce 344 5160**

**Alex 348 0339**

in association with **MORRIS & SON BUILDERS - WANGANUI**

**Proud to support Daffodil Day**



**PROUD TO SUPPORT DAFFODIL DAY**

Proud sponsor of the **Wanganui Cancer Society**  
We wear it for you.





## Arrangements for Daffodil Day - Friday, August 30



The Cancer Society has ordered 2000 bunches (each bunch has 10 stems) from a commercial grower in Palmerston North. They will be sold for \$7 a bunch from 26 locations around Whanganui including Victoria Ave, shopping centres in the suburbs, Trafalgar Square and at the hospital.

As the Society's area includes Rangitikei and the Waimarino, they will be selling daffodils and merchandise in those areas as well. All told, there will be 200 to 250 volunteers helping out on the day.

On the Saturday, just in case you missed buying a bunch or two on Friday, there will be stalls at the market, Mitre 10, Pak n Sav and New World.

Daffodil Day is the Cancer Society's number one fundraiser. Last year they raised around \$70,000 and Jane Beamsley, Manager of the Society says, "The indications are looking good for meeting or exceeding that figure this year." She adds, "Daffodil Day will be on rain, hail or shine."

**Pictured: Judy McIntyre in the midst of daffodils**

## Cancer Society Raffle

The Society is selling tickets at \$10 for its big raffle. The first prize is a return flight to Auckland, thanks to Chatham Air as well as a night at the Sky City Grand Hotel. Second prize is a \$500 voucher from Harvey Norman with third prize a hamper from New World worth \$150.

There are also six smaller prizes each

worth \$50. They are from Monahan's Barber Shop, Momiji Japanese Restaurant, Pita Pit, Z London Street, Club Metro and Resenes Paint. Resenes are also offering in Whanganui only at this stage, (it could become nationwide), a \$1 donation for every yellow test pot sold. 'Yellow' includes any paint that looks 'yellowish.'

**GET COMMERCIAL EMPLOYMENT PROPERTY WILLS & TRUSTS EXPERTISE LAW**

**MOORE LAW** Lawyers & Conveyancers

**When it comes to buying or selling a property, you should always get Moore.**

*We are proud to support Daffodil Day*

Talk to Rob or Richard at Moore Law today for expert, friendly advice.

Talk to the team today  
Tel. (06) 349 0012  
[www.moorelaw.co.nz](http://www.moorelaw.co.nz)

## Mobility Equipment Wanganui Mobility Scooters

Local sales, service, repair & rental



- Powerchairs
- Wheelchairs
- Ramps
- Walkers

Call Graeme  
**06 347 6927** or  
**021 119 5118**  
[graemekt1@gmail.com](mailto:graemekt1@gmail.com)



Proud to support the  
**Whanganui Cancer Society**

Balance can help you to:

- Reduce the risks
- Identify the challenges
- Create solutions, and add value to your business



**Whanganui**  
**06 348 0062**  
16 Bell Street, Whanganui

**Ohakune**  
**06 385 8801**  
22 Ayr Street, Ohakune

[www.balanceonline.co.nz](http://www.balanceonline.co.nz)



*Pleased to support*  
**DAFFODIL DAY**

**paperplus**

My books. My stationery.

Trafalgar Square, Taupo Quay, Wanganui  
Phone 348 0351

## Domestic and Commercial

*Also servicing the WAVERLEY & WAITOTARA AREAS*

- Craftsman, Plumbers & Gasfitting
- Roofing
- Drainlaying



*Proud to support*  
**DAFFODIL DAY**

**MOASE PLUMBING**

**Phone 346 5658**

Email: [moaseplumbing@xtra.co.nz](mailto:moaseplumbing@xtra.co.nz)  
Mobile: 0272 497 123



**Cancer Society Daffodil Day**  
With your help there is hope

**DAFFODIL DAY APPEAL**  
30 AUGUST 2019

**Please donate this Daffodil Day**  
The Wanganui Cancer Society needs your support.

Look out for the volunteer donation booths that will be throughout Wanganui this Friday & Saturday

For more information contact us on: P: (06) 348 7402  
3 Koromiko Road, Wanganui. [enquiries.wgi@cancercd.org.nz](mailto:enquiries.wgi@cancercd.org.nz)



## Schools helping out with Daffodil Day

A number of schools have held their own fundraisers. Carlton has had a mufti day, Noah's Ark pre-school has had a yellow dress up day, Upokongaro is having a daffodil coin train and Brunswick is also getting involved. There could be more schools but sometimes it is only when they present the funds, that the Cancer Society is aware of what they have done.

Volunteers selling daffodils include school students. Mosston will be staffing the front of the hospital spot, Carlton the Lambie Entrance to the Hospital, St Georges will be at the Market on Saturday and the Girls Guides will be outside New World.

## Cancer signs and symptoms

A significant percentage of newly diagnosed cancers can be cured. A cancer is more curable when detected early. Although some cancers develop completely without symptoms, the disease can be particularly devastating if you ignore symptoms because you do not think that these symptoms might represent cancer.

Cancer often has no specific symptoms, so it is important that people limit their risk factors and undergo appropriate cancer screening. Most cancer screening is specific to certain age groups and your doctor will know what screening to perform depending on your age.

People with risk factors for cancer (for example, smokers, heavy alcohol use, high sun exposure, genetics) should be acutely aware of potential cancer symptoms and be evaluated by a medical specialist if any develop. The best way to fight cancers is by prevention (eliminating or decreasing risk factors) and early detection.

If you have any of these signs, see your doctor. These are potential cancer symptoms.

1. Change in bowel or bladder habits.
2. A sore that does not heal.
3. Unusual bleeding or discharge.
4. Thickening or lump in the breast or elsewhere.
5. Indigestion or difficulty in swallowing.
6. Obvious change in a wart or mole.
7. Nagging cough or hoarseness.

**Paul Neal & Associates Ltd**  
Accountants ~ Wanganui

Your Complete Accounting  
Care Providers!

PROFESSIONAL SERVICE!

LANGUAGE YOU CAN UNDERSTAND!

FRIENDLY STAFF!

Proudly supporting the  
Wanganui Cancer Society

Making Accounting less Taxing!

Unit 3, Suite B, Wicksteed Tce  
E-Mail: [pneal.ltd@gmail.com](mailto:pneal.ltd@gmail.com)

Phone 06 348 9989 Fax 06 348 9939

## What the local Cancer Society does

The local Cancer Society is based at 3 Koromiko Road. They are open Monday to Friday 8.30am to 3pm. Their phone number is (06) 348 7402.

The Society is here to support local people and their families when they are faced with a diagnosis of cancer.

**Their free services include:**

- One on one support with their Supportive Care Coordinator.
- Transport to treatment or appointments locally, in Palmerston North or Wellington.
- Information brochures and books.
- Softies and sleeves for breast cancer aftercare.
- Support groups for men and women with

lymphedema.

- Advocacy.
- Health promotion programmes & initiatives including sun-smart schools, shade and sunscreen and workplace presentations.

**Outside services that they subsidise and/or facilitate include:**

- Counselling - weekly.
- Massage Therapy - weekly.

- Reiki - weekly.
- Breast-care consultants (prosthesis & bras) - twice a month.
- Wig consultant - once a month.

**How the Society operates:**

The Society is not government funded so they rely on generous donations, bequests, fundraising events and grants.

To become a 'Regular Giver' you can download their Regular Giving form available on their website and return it to the address listed on the form. You can give as little as \$1 per week.

If you are interested in leaving a donation in your will, download the information brochure to find out how you can do this.

## Daffodil Car Rally raises \$1500 for Cancer Society

Last Sunday, the Wanganui Vintage Car Club organised the now annual Daffodil Car Rally. There was "a fantastic turnout" of around 120 cars and more funds were raised through a raffle and from donations on the day. At least \$1500 was raised for

the work of the Cancer Society with most coming from the \$10 per car entry fee.

Club Captain Club, Frank James, said the day is part of a national Daffodil Day fundraising effort which includes rallies and vehicle displays from Vin-



Over 120 vehicles took part in the Rally (Photo courtesy of Darryl Seymour)

tage Car Clubs all around the country.

Participants were given an information pack and two hours to do a scatter run covering as many of the 30 locations spread around Whanganui, earning points along the way. A highlight was the num-

ber of cars doing a 360 turn around the Watt Fountain - partly to earn extra points.

The overall winner of the day was Brian Clark with co-pilot Tania Reynolds. They took home the Wanganui VCC Daffodil Shield. Their names will

be added with previous winners at the Wanganui VCC club rooms.

Other winners were Kim Steedman and Kim Ostern for the best dressed participants and Andrew and Sue Dittmer for the best dressed car, a 1937 Austin 10.



There were a number of donated spot prizes as well as a special raffle of a daffodil tea cup and plate, won by Dave McDermid and his partner, Hihi.

**ST JOHNS**  
*Club*

Members, Guests & Affiliate members always welcome.

Proud to support  
**DAFFODIL DAY**

158 GLASGOW ST - PHONE 348 0082  
[www.stjohnsclub.co.nz](http://www.stjohnsclub.co.nz)

**THE AUTOFIX TEAM**  
REPAIRS & SERVICING  
**AUTOFIX**  
TYRES - SUSPENSION

87 Ingestre Street, Wanganui  
phone: 06 348 8345, fax: 06 348 8344  
email: [contact@autofix.co.nz](mailto:contact@autofix.co.nz) [www.autofix.co.nz](http://www.autofix.co.nz)

**DOYLE**  
+ associates  
THE ACCOUNTANTS



**DOYLE AUDIT**  
Chartered Accountants Ltd

Proud to support the Whanganui Cancer Society

**Whanganui Office**  
32 Taupo Quay  
PO Box 641, Whanganui 4540  
Ph: 06 349 0466

**Turangi Office**  
Shop 74, Town Centre  
PO Box 13, Turangi 3353  
Ph: 07 386 8900

[www.doyles.co.nz](http://www.doyles.co.nz)

**BULLOCKS**

Proud to be family owned  
and operated since 1928

[www.bbullocks.com](http://www.bbullocks.com)

- Drainage
- Subdivisions
- Forestry Roding
- General Contracting
- Concrete & Aggregates



Proud to support  
**Daffodil Day**



# What day is FATHER'S DAY? SUNDAY

Don't forget your Dad!

Celebrate with Cellophonics - concert on Sunday



Daffodil Day, Father's Day, the first day of Spring, the joy of music and fifteen years of Cellophonics. There is plenty to celebrate on Sunday, 1 September, so why not join Chamber Music Wanganui as they present a special concert by the ever popular Cello-

phonics, who are currently touring the Central North Island. Following their very popular and highly successful concert last year, the group is returning to play on Sunday, 1 September at 4pm in the Main School Hall of Wanganui Collegiate School (opposite the Chapel).

For 30 years James Tennant has been training up New Zealand's leading cellists and created many cello ensembles from the Belli Celli and ACE, to Cellophonics, which has been performing now for 15 years.

Members of past Cellophonics have gone on to become international stars of the concert stage after they completed their studies at the University of Waikato, such as Santiago Canon Valencia and Edward King and there are potential stars of the future within this current group of very talented students.

Ever changing, ever evolving, Cellophonics continues to inspire composers to create works for the group that enlarges a growing popularity with audiences around the world for exciting and inspiring cello ensembles. We hope you will come and witness for yourselves the absolute delight and passionate performing of a wonderful group of totally committed and inspirational artists.

This year's programme includes the Vivaldi Concerto for 2 cellos, accompanied by cello "orchestra", music by Boccherini, Bernstein (Meditation No 3 for 5 Cellos from Bernstein's Mass) arranged by the soloist, Bethany Angus, Variations on a theme of Paganini, Tangos and solo items from guest soloist and rising star, Matthias Balzat.

Tickets will be available at the door (no eftpos). Adults \$25, Chamber Music Subscribers \$20, students \$5.

Light refreshments served in the interval.

**Sue's THAI Massage**

TRADITIONAL MEDICINAL THAI MASSAGE

FEEL BETTER RELIEVE STRESS END PAIN

Monday - Saturday 9.30am - 7.00pm

Half Hour **\$35.00**  
One Hour **\$60.00**

**Gift Vouchers Available**  
180 Wicksteed St, Wanganui  
Ph 06 777 3105 or  
text 022 001 6476  
suesthaimassage.wanganui.co.nz

**FATHER'S DAY GIFTS**

Pop in and visit the team at the

**Wanganui Motors Parts Department**

for loads of awesome gifts for your Dad.

82 Ridgway St, Wanganui  
Ph 06 349 0930  
www.wanganuimotors.co.nz

**WANGANUI AERO CLUB**

**GIVE DAD THE GIFT OF A FLIGHT THIS FATHER'S DAY SEND HIM FLYING WITH US!**

**THE SKY IS NOT THE LIMIT! FLIGHT VOUCHERS AVAILABLE**

Buy dad an introductory flight from only \$95 or take to the skies together for \$125

See our website for more information.  
Ph: 06 345 0914 www.wanganuiaeroclub.co.nz

## Infrastructure growing for sustainable transport in Wanganui



Installation of Drews Avenue electric vehicle charging station underway

Wanganui's sustainable transport infrastructure continues to grow with the addition of an electric vehicle charging station on Drews Avenue, bike racks in the central business district and signs on the St Hill Street shared pathway.

The charging station, supplied by Tesla free of charge, is located on Drews Avenue opposite the i-SITE Visitor Information Centre. Tesla owners and electric vehicle owners with an adapter will be able to use the charger.

Town Centre Regeneration Project Manager, Ellen Young, says the charger is marketed to electric vehicle owners nationwide "and Wanganui will now be included on apps and online maps as a place to stop and recharge vehicles."

"This will bring out-of-town visitors with electric vehicles into Wanganui's tourism hub, giving them an ideal opportunity to experience our riverside and explore retail and arts offerings in the vicinity."

"The charger also connects nicely with a developing theme for this location," says Ms Young. "Wanganui's historic tram is electrically powered and a fence soon to be installed around the tram shed will feature imbedded electrical glass insulators. Having an electric vehicle station in the area adds to this clean energy story."

Bike racks with a durable black coating have also recently been installed throughout the central business district.

Ms Young says the Victoria Avenue bike racks "fit nicely with the town centre streetscape and bring cyclists from the shared pathways to businesses in the town centre."

Wanganui District Council's Senior Roading

Engineer, Brent Holmes, says Wanganui's network of shared pathways – footpaths designated for shared use by people who are cycling, scootering, skating or walking – is progressing well.

"People may have noticed green rectangles with bike symbols and arrows appear on busy vehicle crossings on the St Hill Street shared pathway recently."

The markings are there to warn drivers of cyclists approaching and cyclists of a busy crossing. Symbols and arrows advising people to keep left have also been applied along pathways from Dublin Street to Taupō Quay.

Mr Holmes says the St Hill Street shared pathway is almost complete and work is also underway on the link from Dublin Street through to London Street, along the rail corridor.

"This section will have a permanent counter to monitor pedestrians, cyclists and direction of travel."

Mr Holmes says so far shared pathway use data – collected from a counter on the river pathway – has recorded "significant growth" in pedestrian and cycling traffic each year since construction.

Research from cycling facilities in New Zealand and overseas shows that 60% of the population want to cycle and will let their children cycle, but need facilities separated from the road to feel safe, Mr Holmes says.

Mr Holmes says central government, via the New Zealand Transport Agency, has a charter to encourage more walking and cycling for recreation, easing traffic congestion and combating climate change emissions.



The link from Dublin Street through to London Street, along the rail corridor is well underway





# WHANGANUI HIGH SCHOOL

[www.whanganuihigh.school.nz](http://www.whanganuihigh.school.nz)

## Tēnā koutou katoa,

The first Saturday night of the school holidays brought us the spectacular Whanganui High School Senior Ball 'When in Rome...'. Over the last few weeks since that evening, our students and staff have been involved in a wide range of enriching experiences including: 25 senior students, parents and teachers travelling to Spain; School exchanges with Whanganui Collegiate and Hawera High School; Dance NZ Made performances; Student Achievement Conference afternoons and evenings; Central Six Junior tournament; Whanganui and Manawatu Mathex Competition; The Big Sing Cadenza Competition; Massey University and Victoria University Open days; Future Focus Week for students and Future Focus evening for students and parents.

Winter Tournament Week for our Senior sporting teams begins on Monday, 2 September – sincere appreciation and thanks is extended to all whānau and staff members who freely give up their own energy and time to enable our students to compete at the highest levels regionally and nationally.

Our Senior Course selections for 2020 close on Friday, 6 September. We then head into our very important Senior School Examinations from Thursday, 12 September to Friday, 20 September, in preparation for the NCEA External Examinations beginning on Thursday, 7 November.

Ngā mihi nui

**Martin McAllen - Principal**

MEI Leadership with First Class Honours,  
PG Dip Ed Leadership, BA, Dip Tchg

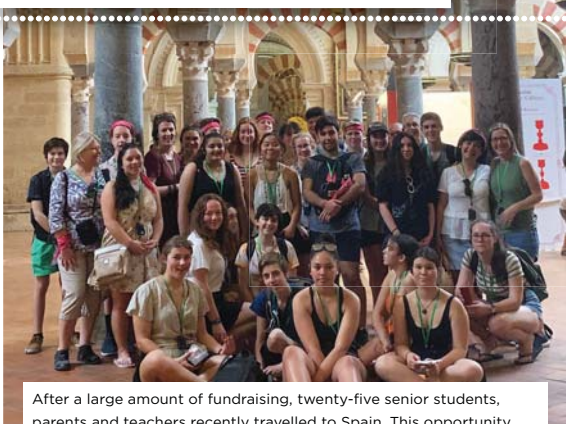
PRINCIPAL'S  
NEWSLETTER  
FOR AUGUST  
2019

## CALLISTA BOOTH-RICHARDS & ASPEN FELL

Artistic roller skater, Aspen Fell, has been selected by international judges at the Artistic Roller Skating Championships to represent New Zealand at the Oceania Artistic Championships, held in Melbourne in October. Aspen has accelerated to this international level in less than a two-year period. Callista Booth-Richards had great results at the recent NZ Artistic Skating Nationals in New Plymouth. Callista was placed first in Advanced Figures and is the current National Champion for this grade.



## TRIP TO SPAIN



After a large amount of fundraising, twenty-five senior students, parents and teachers recently travelled to Spain. This opportunity allowed the students to practice the Spanish speaking skills they have been learning in class and to have a memorable cultural experience. They visited 10 cities and covered 2570km. Some of the highlights of the trip were: Toledo, Barcelona, Córdoba, bread, ham, paella, flamenco dancing and the hot weather. A common phrase to be heard from the students was: "¡I ha sido un viaje estupendo y una experiencia increíble!" (It has been an awesome trip and an amazing experience!). Thank you to the teachers who organised the trip (Beverly Stuart, Queral Scott and Catherine Sleyer).



## KEIGHTLEY WATSON

Our Judoka superstar Keightley Watson has just returned from the Asian Open in Taipei after winning a bronze medal in the Senior Men's division. In September, Keightley will be at a Japanese training camp, in preparation for his next major International tournament – the Oceania tournament in Perth. He is in the running for selection for the Tokyo Olympic Games in 2020.

## ZOE BRACEGIRDLE

Year 11 student, Zoe Bracegirdle has won the 'Young Photography' Section of the Waimarino Art Awards with her photograph titled 'Poison'. The winning shot was taken at Paloma Gardens in Fordell.



## RENEE TEERS

Renee Teers leading the pack at the recent World Roller Games in Barcelona. Renee is now focusing her attention on training for the 2020 World Championships in Colombia.



## ROMAN KOTUHI-BROWN

Roman Kotuhi-Brown won the Rāwhiti Ihaka Junior Māori Speech Competition at the Ngā Manu Kōrero Regional Competition. Roman now turns his focus to the upcoming National competition, which is to be held in Palmerston North in September.



**WHS**  
ACHIEVERS

TO SEE THE COMPLETE LIST  
VISIT OUR WEBSITE:  
[www.whanganuihigh.school.nz](http://www.whanganuihigh.school.nz)

## JACK CLIFTON & LUCAS THOMPSON

Jack Clifton and Lucas Thompson have just returned from competing in Romania in the Canoe Sprint World Championships. It was held at Budeasa Dam on the Arges River. The competition was intense and they finished ninth in the B Finals.



Our school **Kapa Haka** group (*Kia Whaiora*) recently performed at the opening ceremony of the Confucius Institutes' International Conference at Victoria University of Wellington. Our students performed to the world-wide head of Confucius Institutes as well as a wide range of people from Chinese, Australian and New Zealand Universities.



**WHS**  
**KAPA HAKA**  
*Kia Whaiora*

## THE SCHOOL BALL

The 'When in Rome' theme of our annual School Ball, had students enter a Roman inspired theme at the Whanganui Racecourse on the evening of Saturday, the 6th of July. The Heads of Social, Ella Dudley and Jarad Knight, and their team of prefects spent the majority of Friday decorating the venue from head to toe. From the entrance, to the photo backdrop, to the table settings, the night was soon filled with memories, amazingly catered food and music for everyone to enjoy. The Class of 2019's night was captured through various talented photographers. A huge thank you to everyone who contributed to the evening, helped behind the scenes, and everything in between, to make the night a success.



FOR MORE PHOTOS PLEASE  
VISIT OUR WEBSITE



# 'Shades' at The Grand - poetry and jazz event supporting Brain Injury Assn - September 8

While reports of brain injuries suffered by sports players often appear in the news, funding for the Brain Injury Association has been cut back, leaving the association struggling financially.

Liaison officer for Brain Injury Association Whanganui, Vivienne Stevenson says like many community service charities, thinking up new ways to find funds to keep going is a challenge. When BIAW board member, Michele Nickolls suggested an entertaining poetry night, the idea was welcomed.

Vivienne says, "It is a great way to reach a different demographic. We hope it will not only help raise funds but becomes an opportunity to inform people about the work of the local Brain Injury Association, which extends to the Rangitikei region."

Organiser, Michele, says calling the event 'Shades' indicates how a brain injury can manifest in so many ways. "It can happen to anyone, across all walks of life."

Michele's personal brain injury story is one of battling with the



(From left), Brain Injury Association Whanganui Liaison Officer, Vivienne Stevenson, performer Rachel Doré and 'Shades' poetry and jazz night organiser, Michele Nickolls

results of early childhood surgery and aggressive radiation treatment for a brain tumour, affecting her balance and hearing, which has worsened over the years. "I've got to have multiple sets of strategies to get things done," she says. "You learn to work round it."

The event is supported by donations from the

local businesses for raffles and Michele says, "While I've been canvassing for donations for raffles I've been really impressed by the generosity of business owners. People really get that the Brain Injury Association does valuable work and they're happy to support it. We'll have some fabulous raffles on the night."

Poet, Rachel Doré, and musicians, Ken Cherronoff and Chris Dann are performing to support the cause. The evening programme will be a mix of Rachel's original poetry and jazz, with a bit of improvisation. She will also read some of her favourite poems.

Michele says the evening is bound to be en-

tertaining. "Rachel's own poems are life stories. Her delivery has a powerful kind of truth. Some of her poems are humorous and hard hitting at the same time and they're all thought provoking."

'Shades' at The Grand is on Sunday, September 8, starting at 7pm. Entry is by paper money donation (\$5 up).

## Blind Spot

with Marion Hainsworth

Now that Spring is upon us we encourage members if out walking, to enjoy the lovely scents from all the city gardens.

At the Annual General Meeting of the Association of Blind Citizens Committee (ABC) earlier this month, a number of new members were elected. The committee members for the year ahead are:

Joan Harris has been re-elected Patron.

Dave Couling (Chairman)

Bryn Davies (Treasurer)

Rosemary Morgan

Marion Hainsworth

Russell Lowry

Joe Twomey

Jill Winsor

Erica Balsey

John Hanna (Sighted Secretary).

Thanks are expressed to retiring members, Joe Fallen and Keri Gorman and particular appreciation to Kevin Gorman for all his supportive work in recent years. It is sincerely hoped that Keri and Kevin will be able to return to the committee in the near future.

Thursday afternoon 2.00pm social gatherings in September will be the 5th and 19th. The indoor bowlers are presently forming their teams to attend the Nationals in October.

For information please contact: Dave, on 343-3117; Ken on 021-0245-2355 – indoor bowls; Bev, on 348-4407 – for craft activities.

These monthly Blindspot articles can also be accessed on the Telephone Information Service (TIS), operated by the Blind Foundation – phone 348 4403, extension 4541.

- Marion Hainsworth



6 September  
10am to 2pm

## Join the Party!

**BestStart Harrison Street is 25 years old!**

We're throwing a party to celebrate and **everyone's invited.**

Join us for a **disco**, jump on the **bouncy castle**, munch on **fish and chips** and enjoy an all-round awesome party with fun family **games** and **activities.**

55-57 Harrison Street | 04 347 6589  
harrison@best-start.org | [www.best-start.org](http://www.best-start.org)



## Blue September - raising awareness of Prostate Cancer

Blue September is about getting the word out. If you hold a Blue Do, buy a blue ribbon, paint your face blue, donate money or simply share information with others, you will be directly helping to eliminate death and suffering from Prostate Cancer.

Every year around

3,000 men are diagnosed with prostate cancer in New Zealand and more than 600 will die. That's about the same number as women who die from breast cancer. Prostate cancer is the most commonly diagnosed cancer in men.

The good news is that early detection can significantly reduce the

risk of death. Many men don't know how dangerous prostate cancer is and so they don't talk about it, including with their doctor.

Finding the cancer early can save lives but not all prostate cancer needs to be treated.

The Prostate Cancer

Foundation receives no government funding, relying on the public to help them spread the message for men to get regular

checks, fund research that will improve diagnosis and treatment outcomes and provide support for those

who need it the most – the men and their families living with prostate cancer every day.



**POWER TOOL**  
CENTRE GROUP

- Power Tool Sales
- Power Tool Accessories
- Power Tool Repairs

Proudly supporting Blue September

Cnr Ingestre & Wilson Streets, Wanganui.  
Ph 06 345 4884  
or visit us at: [www.powertoolcentres.co.nz](http://www.powertoolcentres.co.nz)



### Risk factors for Prostate Cancer

Prostate cancer affects men mainly over 50 and your risk increases with age. If you are under 50, your risk of getting prostate cancer is very low, unless your father or a brother has had prostate cancer. If you are aged

between 40 and 50 and your father or a brother has had prostate cancer then you should see about having a check with your doctor, as you are more than twice as likely to get prostate cancer if this is the case.

### The importance of going to the doctor early

A study by Midland Cancer Network and Auckland University found that the survival of men in New Zealand, with advanced or meta-

static prostate cancer was poor. The survival rates were worse for Maori and Pacifica men compared with non-Maori.

Professor Ross Lawren-

son of the Waikato clinical campus of Auckland University said home therapy and chemotherapy were under-utilised in New Zealand in patients with advanced prostate cancer. Only 0.2% of all men diagnosed with prostate cancer from 2006 to 2011 had received chemotherapy, compared to 16% in the USA.

Professor Lawrenson said, "We can now empower patients and their families to make better informed decisions and support doctors to provide better care."

By comparison in the UK 80% of patients with metastatic prostate cancer survive.

### Symptoms for Prostate Cancer

Many men with prostate cancer have no symptoms and no problems peeing. Problems with peeing are common as you get older and are mostly due to things other than prostate cancer. In fact most men who have problems peeing have an enlarged prostate but do not have cancer. However, prostate cancer can make it hard to pee, make you leak urine, make you need to pee more often and sometimes cause blood in the urine. If you have any of these problems you should talk to your doctor.

**Harcourts**

Pleased to support **Blue September**



Whanganui's  
Most Experienced Salesperson  
**Hans Vanderschantz**  
M 027 245 3532  
P 06 349 0883  
Harcourts Whanganui  
Licensed Agent REAA 2008

**H&A**  
PRINT

Proud to Support ...



**BlueSeptember**  
Facing up to Prostate Cancer

CALL NOW FOR A FREE QUOTE Ph 06 345 3145  
info@haprint.com  
www.haprint.com



**PROTECT YOUR HEAD WITH A**



**PACIFIC**  
ATV / QUAD BIKE HELMET

**PAC FIRE**  
NEW ZEALAND

WWW.PACFIRENZ.COM  
SALES@PACFIRENZ.COM  
PHONE (06) 344 7391

PACIFIC HELMETS NZ LTD & PAC FIRE NEW ZEALAND LTD ARE PART OF THE PACIFIC SAFETY INTERNATIONAL LTD GROUP



**W&W CONSTRUCTION**  
2010 LIMITED

We are proudly supporting  
**Prostate Awareness**

ph 06 344 5153  
fax 06 344 5110  
376 Heads Road, PO Box 844,  
Wanganui 4540

admin@wwconstruction.co.nz

**LOADERS WANGANUI**

[www.loaders.co.nz](http://www.loaders.co.nz)

Proud to support  
**Blue September**

- Drainage • Roading
- Earthworks
- Traffic Management
- Hydro Excavation
- Machinery Hire & Transport

06 348 9034 info@loaders.co.nz

**CIVIL ENGINEERING • EARTHMOVING CONTRACTORS**



**EAR HEALTH**  
PROFESSIONAL EAR CARE

**Ear Health Nurse**  
*Sheryl Ferguson*

Offering assistance for ear problems in adults and children, glue ear, runny ears and itchy ears.

Removal of wax by suction.  
A much kinder and safer method of removing wax.

For adults and children.  
The only acceptable method for tinnitus sufferers.

For an appointment please phone  
**06 348 7980**



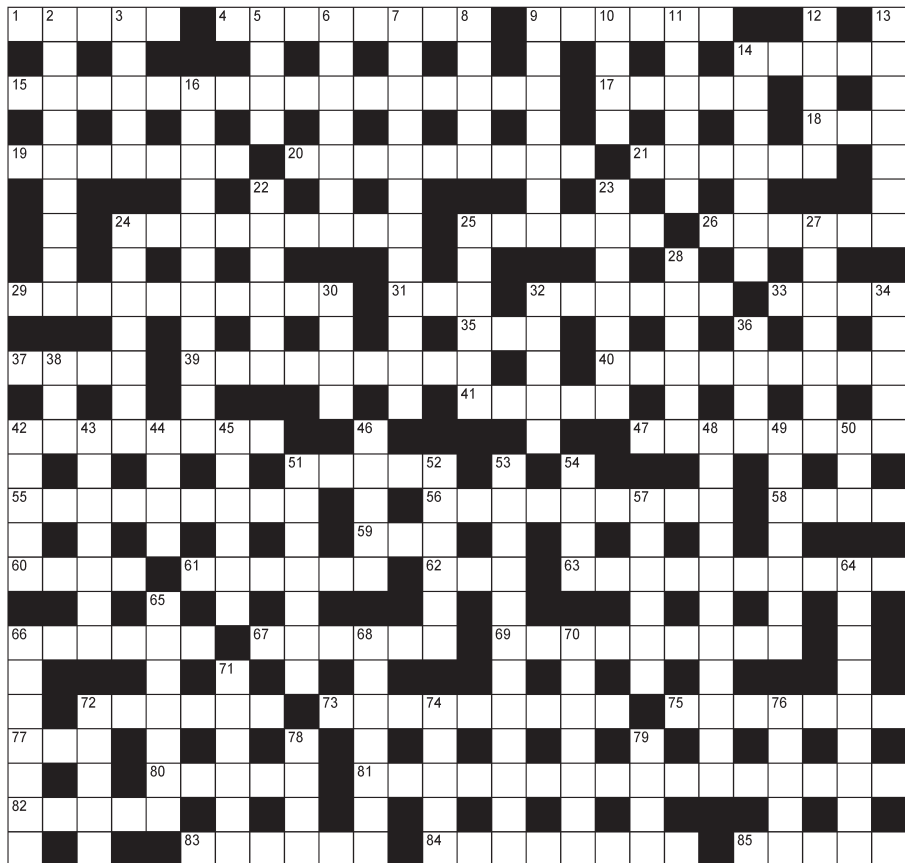
# Jumbo crossword

## ACROSS

- 1 Black-and-white animal (5)  
4 Manufacturer (8)  
9 Shellfish (6)  
14 Accommodate (5)  
15 Toe the line or leave (5,2,2,4,3)  
17 Brown photography tint (5)  
18 Peppery (3)  
19 Hold (7)  
20 Treaty participant (9)  
21 Hat (6)  
24 Academic (9)  
25 Snobbish (6)  
26 Mooring cable (6)  
29 Thought back (10)  
31 Small (3)  
32 Looked for (6)  
33 Stumble (4)  
35 Astern (3)  
37 Mix up (4)  
39 Lacking flavour (9)  
40 Intimacy (9)  
41 Adolescence (5)  
42 Breakfast fare (8)  
47 Blood feud (8)  
51 Lively ballroom dance (5)  
55 Complex (9)  
56 Group of supporters (9)  
58 Sway (4)  
59 Black sealant (3)  
60 Digits on feet (4)  
61 Stick (6)  
62 Donkey (3)  
63 Pierced (10)  
66 Night-time biter (6)  
67 Approximated (6)  
69 Lead off the issue (9)  
72 Swamp (6)  
73 Headed as team leader (9)  
75 Hush (7)  
77 Slack, remiss (3)  
80 Tempest (5)  
81 Invented allegations (7-2,7)  
82 Make payment (5)  
83 Warmred (6)  
84 Sit astride of (8)  
85 Fireplace (5)  
2 Love goddess (9)  
3 Bus station (5)  
5 Space (4)  
6 Set of documents (7)  
7 Soot remover (7,5)  
8 Perch (5)  
9 Protruding rock face (7)  
10 Window frame (4)  
11 Cease to be valid (6)  
12 Aggressive (5)  
13 Treated hide (7)  
14 Corridor (7)  
16 Acting spontaneously, without constraint (11)  
22 Frightens (6)  
23 Loyal and dependable (7)  
24 Fleece remover (7)  
25 Restless (6)  
27 Snake (7)  
28 Select (6)  
30 Coloured (4)  
32 Dark beer (5)  
34 Italian dish (5)  
36 Fermented honey drink (4)  
38 Pair (3)  
42 Lithograph (5)  
43 Rejuvenated tyre (7)  
44 Eye part (4)  
45 Protects (6)  
46 Strike with a heavy blow (5)  
48 Terror-inspiring (11)  
49 Set aside for a specific purpose (7)  
50 Facial twitch (3)  
51 Reveals (anag)(7)  
52 Fearful (6)  
53 Fairytale footwear article (5,7)  
54 Poultry cage (4)  
57 Kindle (6)  
64 Working productively and economically (9)  
65 Imply (7)  
66 Quayside post (7)  
68 Awarded (7)  
70 Anticipated with fear (7)  
71 Nook (6)  
72 Knowledge tests (5)  
74 Tie up tightly (5)  
76 Mistake (5)  
78 Soot stain (4)  
79 Colourful gemstone (4)

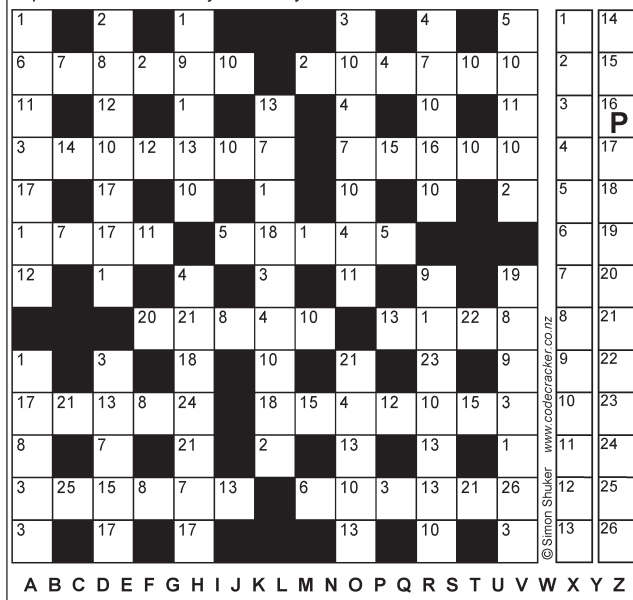
## DOWN

- 2 Love goddess (9)  
3 Bus station (5)  
5 Space (4)  
6 Set of documents (7)  
7 Soot remover (7,5)  
8 Perch (5)  
9 Protruding rock face (7)  
10 Window frame (4)  
11 Cease to be valid (6)  
12 Aggressive (5)  
13 Treated hide (7)  
14 Corridor (7)  
16 Acting spontaneously, without constraint (11)  
22 Frightens (6)  
23 Loyal and dependable (7)  
24 Fleece remover (7)  
25 Restless (6)  
27 Snake (7)  
28 Select (6)  
30 Coloured (4)  
32 Dark beer (5)  
34 Italian dish (5)  
36 Fermented honey drink (4)  
38 Pair (3)  
42 Lithograph (5)  
43 Rejuvenated tyre (7)  
44 Eye part (4)  
45 Protects (6)  
46 Strike with a heavy blow (5)  
48 Terror-inspiring (11)  
49 Set aside for a specific purpose (7)  
50 Facial twitch (3)  
51 Reveals (anag)(7)  
52 Fearful (6)  
53 Fairytale footwear article (5,7)  
54 Poultry cage (4)  
57 Kindle (6)  
64 Working productively and economically (9)  
65 Imply (7)  
66 Quayside post (7)  
68 Awarded (7)  
70 Anticipated with fear (7)  
71 Nook (6)  
72 Knowledge tests (5)  
74 Tie up tightly (5)  
76 Mistake (5)  
78 Soot stain (4)  
79 Colourful gemstone (4)

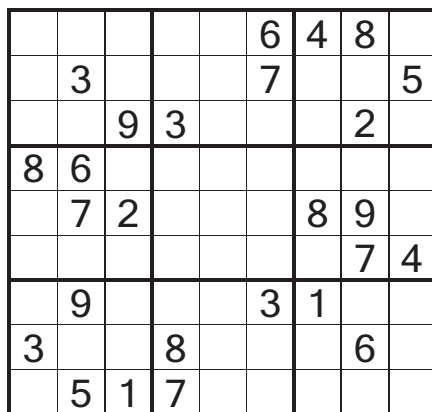


## SIMON SHUKER'S CODE-CRACKER Extra 551

EACH number in our Code-Cracker grid represents a different letter of the alphabet. For example, today 16 represents P, so fill in P every time the figure 16 appears. You have one letter in the control grid to start you off. Enter it in the appropriate squares in the main grid, then use your knowledge of words to work out which letters should go in the missing squares. As you get the letters, fill in other squares with the same number in the main grid and control grid. Check off the list of alphabetical letters as you identify them. Visit [www.codecracker.co.nz](http://www.codecracker.co.nz)



## Sudoku



### EASY

Fill the grid so that every column, every row and every 3x3 box contains the digits 1 to 9.

### Last week

3	2	7	9	6	8	1	4	5
8	1	6	2	5	4	3	7	9
9	4	5	1	7	3	6	2	8
6	5	4	7	1	9	8	3	2
1	8	9	5	3	2	7	6	4
2	7	3	4	8	6	5	9	1
5	9	1	3	4	7	2	8	6
4	3	8	6	2	1	9	5	7
7	6	2	8	9	5	4	1	3

### Last week's CodeCracker

1	K	E	G	C	U	P	A	S	T	R	L	M	B
14	N	D	Z	W	I	J	O	F	V	H	Q	Y	X

All puzzles © The Puzzle Company  
[www.thepuzzlecompany.co.nz](http://www.thepuzzlecompany.co.nz)

## Last week's crossword solution

ACROSS: 1 Swell, 4 Throw in the towel, 14 Shell, 15 Slice, 16 Engagement, 17 Cheap, 19 Sun, 20 Comment, 21 Bilateral, 22 Reject, 25 Masculine, 27 Tattoo, 28 Bursar, 33 Immaturity, 35 Ego, 36 Picnic, 37 Calm, 39 Use, 41 Crystal, 42 Awoken, 43 Conscript, 44 Coast, 45 Dead heat, 50 Be, 51 Reindeer, 55 Lanza, 58 Furtively, 59 Locker, 60 Spanish, 61 Eel, 63 Rude, 64 Junior, 65 Oil, 66 Deportment, 68 Ocelot, 69 Raisin, 71 Abundance, 76 Accord, 77 Congenial, 79 Scolded, 81 Nun, 84 Drama, 85 Granulated, 86 Limbs, 87 Olive, 88 Thin on the ground, 89 Ogled.  
DOWN: 2 Willow, 3 Locum, 5 Hone, 6 Ovation, 7 Ice cap, 8 Theme, 9 Entrant, 10 Once, 11 Evened, 12 Least, 13 Slander, 14 Speed up, 18 Inaccurate, 23 Elf, 24 Concoct, 26 Amassed, 27 Trounce, 29 Seaside, 30 Emerge, 31 Jerky, 32 Fiancé, 34 Yawn, 36 Penal, 38 Meter, 40 Scan, 45 Defer, 46 Abridge, 47 Heir, 48 Avenue, 49 Under, 50 Balloon, 52 Importance, 53 Dynamic, 54 Easing, 55 Lyrical, 56 Scaly, 57 Lead, 62 Spent, 67 Concede, 68 Opinion, 70 Shotgun, 72 Bravado, 73 Preach, 74 Unsung, 75 Feeble, 76 Anvil, 78 Graph, 80 Lying, 82 Dawn, 83 Hewn.

## 5x5

C		A		S
	O		A	
I		A		E
	E		I	
D		E		R

Insert the missing letters to complete ten words — five across the grid and five down. More than one solution may be possible.

S	C	R	I	P
P	R	U	N	E
R	A	I	S	E
I	N	N	E	R
T	E	S	T	S

Last week



Dog owners have come to expect a whole new level of service for their beloved pets from Pet Dog School Ltd, Whanganui - and with over 40 years combined experience caring for dogs and their owners its flattering that we are also chosen by other professionals in the animal care industry to advise and look after THEIR dogs too.

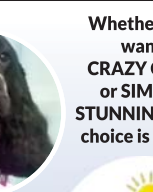
From all dog training to world class doggy daycare, our top class service continues with the introduction of our new

## PROFESSIONAL DOG GROOMER AMY

**Pet Dog School**  
**EXPERIENCE THE DIFFERENCE**

**06 345 2553**

5 Caversham Rd, SPRINGVALE  
[www.petdogschool.co.nz](http://www.petdogschool.co.nz)



Whether you want **CRAZY CUTE** or **SIMPLY STUNNING** - the choice is yours.



## 'Friends and Family' exhibition at Arts Society

Members of the Arts Society hard at work

The Whanganui Arts Society are having a 'Friends and Family' Exhibition at their Cook's Gallery, which is on Trafalgar Street next to the Velodrome. Those involved include:

- Barbara Vine and her son Simon
- Dot Bowra and Heather Spooner's children
- Doreen Cotgrave and daughter Hazel Parlevliet
- Stephanie Lockwood and bird members of her 'family.'
- Elva Abbott and Ambo Smith
- Mia Pearson, daughter of Sheila and granddaughter of April
- Judy Webby and granddaughter Aimeejeo Clark
- Samantha Hart who has pictures from her School Certificate portfolio of 1990.

The exhibition is open on Monday mornings and from 10am to 3pm on Saturdays until the end of September.



## Another great Castlecliff Coast Care Community planting morning



Lyn with some helpers - Photos by Karina Hunt

Graham Pearson from Castlecliff Coast Care advises that, "Due to the site pre-preparation by Paul Jackman and Pat McCarthy, 25 volunteers and two dogs, soon had about 200 plants safely in the ground on Castlecliff's rear dunes on Sunday morning." Coast Care helper Paul said, "everyone, young and old, got real busy either climbing the big sand dunes to plant or filling buckets with mulch and wet newspaper for the planters".

The main plants chosen for these back dunes are ngaio, flax and cabbage trees, which are nice and hardy to cope with the tough conditions. Graham thanks Geoff Potts of Parnell Nursery for some nice big ngaio and WDC for further ngaio and the flax and cabbage trees.

With the planting completed by noon, everyone returned to the Duncan Pavilion. Here Jan, Ruth and Ross had been on kitchen duties, making sure the yummy soup and the sausages were piping hot and the lovely nibbles and fruit all laid out for the hard working planters.

This second Community Planting Day sees Castlecliff Coast Care's winter planting just about completed. Graham said he had a few rear dune plants left to use with the IDEA's groups who come down on Tuesday mornings. Plus some children from Marie McFarland Kindergarten are planning to come down to plant some Spinifex plants.

## Yes - you can recycle all types of batteries and even toothbrushes/paste

While most of us probably think the Whanganui Recycling Centre is there for paper, card, plastic, glass and green waste on the back of a trailer - you can also recycle things such as batteries, glass jars and even everything associated with brushing your teeth. (Not too sure about surplus dentures though).

There is a bin for used domestic batteries outside the entrance door behind the car park around the back. When the RCP had a look, it was almost full. They do ask for a voluntary donation (a jar is there for this). There is also a container for anything to do with tooth brushing - toothbrushes (not electric), used toothpaste, toothpaste boxes and flossing boxes - thanks to Colgate and TetraCycle.

You can also drop off car batteries which are sent off to a recycling centre in Lower Hutt.

Local, Larry Tasker, was especially pleased to find out about this recycling service. He told the RCP, "Torch batteries contain some pretty nasty stuff. The same can be said for



Full container of batteries

polystyrene, which can be recycled but the cost is high so the recycle centre won't accept this. Harvey Norman have a polystyrene bin which customers can put their used polystyrene packing from items purchased from them.

## Recent Bereavements

Sadly passed away recently...

**Sheila Maureen BURFORD**, aged 91 years, died 17 August 2019.

**Shirley Annette GEMPTON**, aged 69 years, died 21 August 2019.

**Regan Ross LITTLEWOOD**, aged 31 years, died 21 August 2019.

**Melissa Nada PARKES**, aged 47 years, died 27 August 2019.

**Donald Stanley STEVENS**, aged 90 years, died 22 August 2019.

**Lorraine Frances WILLS**, aged 76 years, died 20 August 2019.



### Intimate Garden Courtyard Funerals

**DEMPEY & FORREST**  
Funeral directors  
Proud to be 100% LOCALLY OWNED by Jim & James Forrest

This tranquil space offers a unique setting for smaller funerals. Warm sun and beautiful flowers create a special, memorable farewell. Arrange a visit today and meet our friendly team.

Phone 349 0202 (any time, day or night)  
www.dempseyandforrest.co.nz

**Anderson Memorials**  
Your loving memories set in stone +100 YEARS 1914-2014+

## HEADSTONES

Family owned for 105 years

For all monumental work in all cemeteries

462 Somme Parade, Wanganui - opposite the cemetery.  
Tel (06) 343 8708, Email: info@anderson-memorials.co.nz  
Showrooms in Feilding & Palmerston North  
www.anderson-memorials.co.nz

Uniquely special farewells

## Cleveland

Funeral Home

USED BY OVER 50 facebook

173 - 179 Ingestre Street

(06) 345 5522

### Our Weather

Thursday 29 August	
16°C High	
8°C Low	
Friday 30 August	
15°C High	
7°C Low	
Saturday 31 August	
16°C High	
6°C Low	
Sunday 1 September	
16°C High	
8°C Overnight	
Monday 2 September	
16°C High	
8°C Overnight	
Tuesday 3 September	
18°C High	
8°C Overnight	

## Volunteers needed at your local GirlGuides

**VOLUNTEERS WANTED TO BRING MORE AWESOME!**

**YOU BE THE GUIDE**

Join us and use fun and adventure to build girls' confidence and life skills. Flexible options to fit your lifestyle.

**GirlGuiding New Zealand**

0800 22 22 92  
GIRLGUIDINGNZ.ORG.NZ

At GirlGuides, we're committed to empowering girls from all walks of life ... growing confident, adventurous girls who are ready to be tomorrow's leaders. But we need volunteer leaders to be part of this amazing story.

If you're someone that wants to make a vital contribution in your community, aged anywhere between 18 and 80 and can give just a few hours one night a week during school term, then we need to hear from you! Just go to [girlguidingnz.org.nz/join-us/volunteers](http://girlguidingnz.org.nz/join-us/volunteers)



**TRADES AND SERVICES**

**Quality VEHICLE VALET**  
Phone STU for an appointment on  
**027 348 5649**

**Wanganui Motors**  
82 Ridgway Street | Wanganui  
P 06 349 0930  
www.wanganuimotors.co.nz

**puresteam**  
CLEANING CO

**Hypoallergenic Steam Cleaning - Pure and Simple**  
We specialise in cleaning:  
✓ Walls & Ceilings ✓ Venetian Blinds  
✓ Windows ✓ Ovens  
✓ Kitchens ✓ Bathrooms  
✓ Glass Water Stains ✓ Tiles & Grout

**Locally Owned & Operated**  
For a free no obligation quote, contact Dean today:  
**06 347 9049 | www.puresteam.co.nz**

**100% locally owned**

**Dave Hoskin**  
CARRIERS LTD

**Furniture removals door to door**  
**National and international**  
390 Heads Rd, P.O. Box 5042 Wanganui  
Phone: 06 344 7002 Email: darrell@hoskincarriers.co.nz

**The Water Truck**

Delivering to  
Businesses, Schools, Home Deliveries  
in the Wanganui Area, Monday - Friday

**FREEPHONE**  
**0508 928 376** **DAVID - 027 252 2201**

**DAVID JONES**  
MOTORS

**2010 MITSUBISHI RVR**  
1.8L, auto, tints, awesome looking alloys, tidy.  
**only \$13,995**

Phone 06 345 5115 | www.davidjones.co.nz  
276 & 330 Victoria Avenue, Wanganui

**FOR LEASE**

**STORAGE & OFFICE SPACE**  
Large sunny offices in Industrial Area in Rakau Road.  
Some storage available and plenty of secure parking.  
**from \$95.00 p/w + gst**  
ALSO  
**AIRCRAFT HANGAR**  
At Wanganui Airport, could suit Cars, Boats or any other large storage needs.  
**from \$75.00 p/w + gst**  
**PHONE THE LOCAL LANDLORD**  
**0274 434 432**

**Sue's Thai Massage**  
Relieve Stress, Pain, Improve Circulation, Feel Better

Ph 06 777 3105  
022 001 6476  
180 Wicksteed St.  
**1/2 hour \$35 1 hour \$60**  
Web: suesthaimassage.wanganui.com

**Teasers**  
Escort + Massage Ltd

**Staff vacancies available**  
57 Ingestre Street • 022 465 4499  
teasersescorts@hotmail.com

**CHIMNEY NEED SWEEPING?**

**Chim Chim Choo**  
**CHIMNEY SWEEP**  
Over 35 Years Experience  
Parts & repairs our speciality  
**BOOKINGS NOW AVAILABLE**  
**Ph 06 343 1454**  
**Mob 027 555 3074**

**WORK WANTED**

**'HOME** Cleaning for your busy lifestyle. 28 years in business, weekly & fortnightly options. Call Jase 021 976269, Green Acres.  
**MOBILITY** Scooters. Sales, service, repair, rental wheelchairs, walkers, ramps. Call Graeme 021 1195118 or (06) 347 6927.

**PROPERTY** Services Whanganui for fences, gates, decks and building maintenance. Ph 027 9321202.

**STUMP** Grinding, lawnmowing, section clearing. Free, no obligation quote. Clean and Tidy Lawnmowing. Phone 344 2441.

**VEHICLES FOR SALE**

**MERCEDES** Benz C180 Kompressor 2006. Approx. 118000kms. Very good condition. \$6500 ono. Ph: 0272000209.

**FRUIT & PRODUCE**

**FRESH** vegetables available, open Thursdays, Fridays and Saturdays. Laugeson's Gardens, Westmere Road.

**RCP - Locally owned & operated**

**LAWNMOWING**

**AFFORDABLE** lawns, great quality service, great price. Pensioner rates available. Call Paul on 021 245 4999.

**LAWNS NEED MOWING?**  
**Cutting Edge Lawns**  
Keeping Lawns & Costs Down!

- Locally owned & operated
- Pensioner discounts
- WINZ Quotes
- Ride on work

**Wayne Bishop**  
Ph 06 343 1454  
Mob 027 555 3074

**FOR SALE**

**CHICKENS** - Pullets, Hyline Browns. Commercial breed. 18 Weeks old. Ready to start laying soon. \$25 each. Ph 027 8338237.

**JOE** Lett Ltd, all sorts of mobility aids including scooters, wheelchairs, available. Joe Lett Ltd, 11 Churton Street, ph 345 8599.

**LA-Z-BOY** lounge suite. 3-seater couch (each end L-Z-boys) and 2 single L-Z-boy armchairs. Beige. Very good cond. \$900 ono. Ph: 021517800 ah.

**NEW** Seasons fresh native and ornamental shrubs and trees from \$5.00 to \$15.00 for large grades now ready, fine landscaping grades, good hedge lines. Dried blood \$8.00 per kilo. Excellent for all garden use. Give your plants that boost now. Parnells Quality Tree & Shrub Nursery, 102 Fox Road, Phone 344 6645, Est 1895.

**SHEEP** manure \$6 per bag. Buy 5 bags, get 1 free delivered. Phone 344 8128 or 027 3934495.

**BUSINESS FOR SALE**

**LAWNMOWING** run for sale - Whanganui (not franchise) \$9750. Phone 021-0807-4262.

**PROPERTY WANTED TO BUY**

**2+ BEDROOM HOME WANTED**  
**Sunny living, smaller section**  
**Private cash buyers up to \$320,000**  
**Phone Alf on 027 577 6081**

**WANTED TO BUY**

**DVD** Movies. I buy DVDs. Also books and music CDs and vinyl LP records. Buyer will call. Bookman Ph 021-0289-5342.

**FLY** fishing rod and accessories suitable for learner. Phone 021 1183903.

**GINZA**. Always buying, always selling. Good used furniture, antiques, china and collectables. Call Ginza 345 3154.

**PERSONAL**

**FREE**, confidential health checks, STD and HIV screening. Outpatients Department, Wanganui Hospital. Monday and Thursday from 5pm - 6pm. Phone 348 1775.

**PREGNANT?** Worried? Need to talk? We care, listen and help. Ph. 348 0008 or 0800 PREGNANT 24/7.

**TAKE** a break. Bignell Street Motel, two hours, \$55. Phone 0800244635.

**FIREWOOD FOR SALE**

**AFFORDABLE** firewood from \$60 a cube for sale. Please phone us on 06 3438466.

**ONLINE SERVICES**

**CHECK** out www.onlineservices.nz. Just click the link for the wanted site.

**OVER** 11,000 users at Whanganui News Online. Find us at www.onlineservices.nz

**FOR RENT**

**FREE** electricity. Secure, quiet, friendly. Furnished flats and caravans. Bignell Street Motel & Caravan Park. Ph. 0800 244 635.

**TO LET**

**FLATTING** too expensive? Try a portable cabin. Warm, comfortable, self-contained sleepout, delivered. Phone/text 027 450 4965 or (06) 348 7887, www.ptlportables.co.nz.

**GARAGE SALE**

**CANCER Society Pop-up Shop**  
Final Day, Friday  
30 August, 10am - 1pm.  
**Nothing over \$5.**  
Victoria Ave  
between Whitcoulls & Ballentynes.

**HEALTH & BEAUTY**

**JADE** Traditional Thai Massage. Excellent massage at reasonable prices. 64 Guyton Street. Phone 348 8466 for an appointment.

**JAX** Hair Studio. Latest edition GHD in store. Open 6 days, late night Thursday. 51A Ridgway Street. Ph: 3472008.

**PROPERTIES FOR SALE**

**Thinking of selling?**  
Call me today for your Free Market Appraisal.

**Ananda de Koning**  
**027 563 3414**  
**BAYLEYS**  
BARTLEY REAL ESTATE,  
Licensed REAA 2008

**River City Press**  
- the good news paper

**PUBLIC NOTICE**

**Te Punanga ō Hōhēpa**  
**Josephite Retreat Centre**  
**He wāhi rangimārie**  
**nurturing mind, body & spirit**  
Supporting  
Māori Language Week  
**Waiata Kōrero Karakia**  
**2nd September 2019**  
**10am - noon**  
**please register with Pam**  
**Mt St Joseph, 14 Hillside Terrace, Whanganui**  
**Ph (06) 345 5047 - www.marymackillop.org.nz**

**Ray White**  
**Thinking of selling your home?**

**Looking for a Real Estate Agent?**  
Take advantage of our free marketing package or get a 10% discount on commission as a Gold Card Holder\*  
\*Terms and Conditions Apply

**Param Singh**  
021 263 4263  
paramveer.singh@raywhite.com  
Licensed Salesperson REAA 2008





# NEED HELP?

Emergency ..... 111  
City Mission/Foodbank ..... 345 2139  
Women's Refuge Wanganui ..... 344 2004



# CLASSIFIEDS

52 Ingestre St Ph 345 3666  
Email: [rivercitypress@xtra.co.nz](mailto:rivercitypress@xtra.co.nz)

Nominate someone you think is deserving of our **Bouquet of the Week!**

Email or facebook message us with your nomination and reason why they deserve to win!

email: [rivercitypress@xtra.co.nz](mailto:rivercitypress@xtra.co.nz)  
facebook: River City Press Wanganui



## ENTERTAINMENT / PUBLIC NOTICES



## ANNUAL GENERAL MEETING

Will be held in the Clubrooms at 13 Ridgway Street on **Sunday 29th September 2019 at 10.30am**

### Agenda:

- Welcome by Board Chairman, Robert Allen
- Confirmation of quorum (30 members present)
- Mark of Respect for deceased members
- Confirmation of Minutes of Inaugural Meeting
- Matters Arising from Minutes of Inaugural Meeting
- Consideration of Notice of Motion
- Chairman's Report
- Social & Events Committee President's Report
- Statement of Accounts
- Appointment of Auditor
- Appointment of Management Board and Social & Events Committee
- General Business

Please Note:  
Election of Officers for the Board and  
Social and Events Committee for Club Metro  
will take place on Friday and Saturday 20<sup>th</sup> & 21<sup>st</sup> September.

Financial Members only

Signed: S. Atkin (Secretary/Manager)

AMALGAMATION  
OF WANGANUI



RSA

+



## BUYING and SELLING USED FURNITURE



Phone 345 3154  
54 Maria Place Extn  
Email: [ginza2@xtra.co.nz](mailto:ginza2@xtra.co.nz)

Meeting of owners of the  
Rangitatau Waitotara  
3F No.1,  
Rangitatau Waitotara  
No. 3A  
& Arahau 1A2 blocks

14 SEPTEMBER 2019  
Registration 10am  
Meeting commences 10.30am  
at the Maori Land Court  
74 Ingestre St, Whanganui

Agenda:  
• Constitute an ahu whenua trust or trusts for the above blocks including deciding on the terms of the trust.  
• Elect trustee(s)  
For further details please contact  
Queenie Pritchard on 06 346 5617

## PUBLIC NOTICES

WHANGANUI Sound 027-2644-399 (Community Event Services). Not in the book. Find us at [www.findit.nz](http://www.findit.nz) the free online directory or at [www.onlineservices.nz](http://www.onlineservices.nz)



**If You Want To**  
**Dan**  
Dan Shand for District Council

Authorised by D. Shand, 527A Rapanui Road, Whanganui



## PROSTATE CANCER SUPPORT GROUP

An established support group in Whanganui for men and their families who are living with a diagnosis and treatment for Prostate Cancer.

When  
Where  
Contact  
Email

Monday 2 September, 7pm  
Cancer Society Rooms  
3 Koromiko Road, Whanganui  
Brian Deadman - 027 555 0338  
[wanganui@prostate.org.nz](mailto:wanganui@prostate.org.nz)

For more information call  
**0800 477 678**  
Organised by the Prostate Cancer Foundation of NZ  
[www.prostate.org.nz](http://www.prostate.org.nz)

**River City Press -  
the good news paper**

## EMBASSY 3

August 29 -  
September 4

<b>A DOGS JOURNEY</b> (PG) 2hrs 4min Thur, Fri 3.20pm* Sat, Sun 12pm Mon 3.30pm Tue, Wed 3.20pm*	Cinema 1:2
<b>ANGEL HAS FALLEN</b> (R16) 2hrs 10min Thur, Fri 10.30am*, 3pm, 8pm* Sat, Sun 10.30am*, 5.30pm, 7.30pm* Mon 1pm, 6pm, 8pm Tue, Wed 10.30am*, 3pm, 8pm	Cinema 1:3
<b>APOLLO 11</b> (PG) 1hr 48min Thur, Fri 11am*, 1.15pm*, 8pm* Sat, Sun 11am*, 5pm, 8pm Mon 1.15pm, 5.45pm*, 8.30pm Tue, Wed 11am*, 1.15pm*, 8pm*	NEW THE LOUNGE* Cinema 1:2, 3
<b>BLINDED BY THE LIGHT</b> (M) 2hrs 9min Thur, Fri, Sat, Sun 12.30pm, 7.45pm* Mon 1.15pm*, 3pm*, 7.50pm* Tue, Wed 12.30pm, 7.45pm*	THE LOUNGE* Cinema 1:3
<b>DAN CARTER: A PERFECT 10</b> (PG) 1hr 40min Thur, Fri 10am, 5.15pm* Sat, Sun 10am, 5.30pm* Mon 3.45pm* Tue, Wed 10am, 5.15pm	NEW THE LOUNGE* Cinema 1:3
<b>FAST &amp; FURIOUS: HOBBS &amp; SHAW</b> (M) 2hrs 30min Thur, Fri, Sat, Sun 2.15pm Tue, Wed 2.15pm	Cinema 2
<b>FOR MY FATHERS KINGDOM</b> (M) 1hr 47min Thur, Fri 12pm, 5.45pm* Sat, Sun 1pm*, 5.45pm* Mon 1pm*, 5.50pm Tue, Wed 12pm, 5.45pm*	NEW Cinema 1:3
<b>HERBS: SONGS OF FREEDOM</b> (M) 1hr 45min Thur, Fri, Sat, Sun 3.30pm* Tue, Wed 3.30pm*	THE LOUNGE* Cinema 1:3
<b>MIA AND THE WHITE LION</b> (M) 1hr 54min Thur, Fri 10.15am, 5.45pm* Sat, Sun 10.15am, 3.15pm* Mon 3.30pm, 5.20pm* Tue, Wed 10.15am, 5.45pm*	NEW Cinema 1:3
<b>OLDER THAN IRELAND</b> (M) 1hr 45min Thur, Fri, Sat, Sun 1.15pm* Tue, Wed 1.15pm*	THE LOUNGE* Cinema 1:2
<b>ONCE UPON A TIME IN HOLLYWOOD</b> (R16) 2hrs 54min Thur, Fri, Sat, Sun 7.15pm Mon 7.30pm* Tue, Wed 7.15pm	Cinema 1:2
<b>THE LION KING</b> (G) 2hrs 5min Thur, Fri 5.30pm Sat, Sun 3pm Tue, Wed 5.30pm	Cinema 3

Times are subject to change - please confirm at [www.embassy3.co.nz](http://www.embassy3.co.nz)  
office@embassy3.co.nz | info line 06 345 7958

**love tennis**  
All welcome  
come play *its free*  
Sat 7 & Sun 8 Sept, 1-4pm  
[www.lovetennis.kiwi](http://www.lovetennis.kiwi)

**HELL** FIRST 200 CLUB VISITORS  
RECEIVE A FREE SNACK PIZZA  
Wanganui Tennis Club, Bassett Street, Wanganui

**Kaitoke School**  
Rise up, climb high • Kake mai, piki mai  
**YEAR 7/8 INFORMATION EVENING  
ENROLMENTS FOR 2020**  
We are holding an information evening for prospective Yr 7/8 students and parents on  
**Wednesday, 4<sup>th</sup> September  
at 5.30pm in our hall.**  
This is an opportunity to see what our School can offer your child for their intermediate years.  
We look forward to meeting you.  
Vanessa Duncan - Principal  
Rachel Plank - Deputy Principal/Yr 7/8 Teacher  
Phone 06 345 0474  
office@kaitokeschool.com

## ROYAL WANGANUI OPERA HOUSE

Booking Office  
Ph. 349 0511

ONLINE BOOKINGS  
[www.whanganuivenues.co.nz](http://www.whanganuivenues.co.nz)

Booking Office Hours: Mon. to Fri. 10am-4pm

Booking/service fees apply - no refunds/no exchanges

Concert Chamber - WWMC  
**Sue Nicholson - Loss, Grief and Healing**  
Friday 30 August, 7pm  
Age advice 13+ tickets \$72.55

**St Mary's School Concert**  
Thursday 5 September 6.30pm  
Adult \$6.50, Child \$1

**A Taste of Ireland**  
**The Irish Music and Dance Sensation**  
Thursday 12 September 7.30pm  
Including fees: Adult \$74.90, Senior-Student-Group 8+ \$67.90  
Child to 13 years \$59.90

Chamber Music Wanganui Subscription Series

**Tony Chen Lin** (solo piano)  
Royal Wanganui Opera House, Friday 20 September, 7.30pm

**Jacquie Trio**  
Prince Edward Auditorium, Thursday 17 October, 7.30pm  
Per concert: Adult \$35, Senior \$32, CMW subscriber \$20, Student \$5.

## Whanganui Literary Festival

### Literary Quiz

Stella Quiz Room  
Friday 27 September, 6.30pm  
\$10 per person (max 6 per team)

Joanne Drayton, Albert Belz, Ron Palenski, Fiona  
Kidman, Paul Cleave, Corey Mosel and Ajax,

Tina Makereti, Leah McFall

Concert Chamber WWMC  
Friday 4 to Sunday 6 October  
Tickets \$15 per speaker  
or Earlybird Season pass \$70 (ends Friday 6/09/19)

### Dinner with the Stars

Oaks Restaurant Cafe and Bar  
Saturday 5 October, 6.30pm  
Tickets \$45 - numbers limited

### High tea with Amber Rose

Pioneer Room WWMC  
Sunday 6 October, 3pm  
Tickets \$30 - numbers limited

Wanganui Competitions Society

### October Dance Festival

Monday 7 to Friday 11 October  
Festival Pass - Adult \$14.50/Child \$8.50  
or per day - Adult \$8.50/Child \$4.50  
or per session - adult \$5/Child \$3

Belmont Golf Club

### After 5 with Marilyn Waring

Friday 11 October, 5pm  
Ticket \$40

### The Boss - Bruce Springsteen Tribute Show

Saturday 16 November, 7.30pm  
Including fees: earlybird tickets \$55  
From 4 September: tickets \$65

### The Bee Gees - Night Fever

Tuesday 19 November, 8.00pm  
Including fees: Adults \$76.50, Group 6+ \$71.50, Child to 12 years \$35.50

Imperial Russian Ballet

### Swan Lake

Thursday 28 November, 7.30pm  
Premium & A Reserve seating  
Including fees: Adult \$95.75 - \$85.75  
Senior/Student/Group 6+ \$85.75 - \$75.75  
Child U18 \$65.75 - \$55.75  
Family 2A+ 2C \$303.00 - \$263.00

Book early for the best seats. Gift vouchers available.

**River City Press -  
Locally owned & operated**  
52 Ingestre Street, Whanganui



#### Alcoholics Anonymous

Phone 0800 229 6757. If you have a drinking problem maybe we can help. AA Wanganui area meeting list: Sunday, St Johns Lutheran Church Hall, 51 Liverpool Street, Wanganui, 9am; Monday, Friendship Hall, Morris Street, Marton, 7.30pm; Tuesday, 12.30pm, St Johns Lutheran Church Hall, 51 Liverpool Street, Wanganui; Wednesday, St Luke's Church Hall, 34 Manuka Street, Castlecliff, 7.30pm; Thursday, St Johns Lutheran Church Hall, 51 Liverpool Street, Wanganui, 7.30pm; Al Anon, Tuesday, Quakers, 256 Wicksteed Street, 7.30pm, Friday, Gonville Library meeting room, 12.30pm. Ph 0508 425 266.

#### Clairvoyance Demonstration

Clairvoyance, philosophy and healing at the Wanganui Spiritual and Awareness Centre. Our Speaker this week is Matthew Tod from Auckland. 25 Tawa Street, Wanganui. Sunday's 7pm. All welcome. Cost by donation. Like our Facebook page or contact Robert on 345 6308.

#### Country Road Variety Music Group

Now held 1st and 3rd Sundays each month at Club Metro. Doors open 1.00pm. \$3 entry. Lucky door prize - \$10. Bar snacks available. All welcome, especially singers and visitors.

#### Creative Card Making

Suitable for beginners and regular crafters alike. Saturday 7 September, 10am - 12.30pm with Julia Martin. To Register please call Pam on 345 5047 ext 3, or email pam.hopper@sosj.org.au.

#### Friday Nights Dance Night

At Club Metro, 7.00pm until late. Put on those dancing shoes! Come along and dance to an assortment of great music. Rock 'n Roll, Ballroom, New Vogue and Ceroc. Pick a tune and we will play it.

#### Lunch Time Concert

Margaret Thompson at the Christ Church organ. Wednesday, 4 September. 12:15 - 12:45pm. Christ Church, Wicksteed Street, Wanganui. Entrance free. Koha appreciated.

#### Retreat in Inner Peace and Divine Love - Week 4 of 5

Bring pen and notebook for journaling. Thursday, 29 August, 7 - 8.30pm with Juliet Kojis and Karyn Coleman. To Register please call Pam on 345 5047 ext 3, or email pam.hopper@sosj.org.au.

#### Retreat in Inner Peace and Divine Love - Week 5 of 5

Bring pen and notebook for journaling. Thursday, 5 September, 7 - 8.30pm with Juliet Kojis and Karyn Coleman. To Register please call Pam on 345 5047 ext 3, or email pam.hopper@sosj.org.au.

#### Seminar: Getting to Know the Bible Better

7.30pm, Tuesdays, in the Christadelphian Hall, 138 Great North Road. Topic this Tuesday, 3 September: "Jesus' Later Perean Ministry (Part 1)". All welcome. Supper and opportunity to chat. Sponsored by Wanganui Christadelphians. For more about us: www.thisisyourbible.com, or phone 342 7726.

#### Social Dance

Dancesport Wanganui invites all dancers to its monthly social dance on Sunday, 1 September at St Andrews Hall, Bell Street. 7.00pm - 9.30pm followed by supper. Ballroom, New Vogue, Latin, Social dances. Theme Black and White. Members \$5, non-members \$10. Information Kathleen 3442245 or Graeme 0274341823.

#### Theosophy Wanganui

Exploring spiritual development, philosophy, religion, science and the arts. We have a small library, study groups and regular public discussions. Second Sunday monthly, 2pm. Back river entrance Community Arts Centre, 19 Taupo Quay. Contact Kirsty 021 2123819. TheosophyWanganui@gmail.com.

#### Waiata, Korero & Karakia

Join us as we celebrate Maori Language Week 2019. Monday 2 September, 10am - 12pm with Maramapai Simon & Lynaire Simon. To Register please call Pam on 345 5047 ext 3, or email pam.hopper@sosj.org.au.

#### Wanganui Amateur Radio Society Inc (Branch 48)

Wanganui Amateur Radio Society Inc (Branch 48) has its monthly meeting on 2 September, 7.30pm at Deer Stalkers and Hunters Hall, 100 Peat Street, St Johns, Wanganui.

#### What's On in the Community Notices

What's On in the Community notices are \$10 for up to 50 words with the option of a colour heading for an extra \$2 and/or a border for an extra \$10. RCP, 52 Ingestre St, Wanganui by Tuesday 1pm to place your advertisement.

#### Misleading Information

Dear Editor,

Steve Baron's article in the River City Press on the 22 August describing Single Transferable Voting (STV) is inaccurate. He states that for the 2016 Whanganui Mayoral election; "Perhaps the most preferred mayor was the runner up". That statement is misleading: If the mayoral election had been an STV election, the runner up Alan Taylor, 2,900 votes behind Hamish McDouall, required another 4761 votes to reach the quota and be elected, whereas Hamish only needed 1,862 more votes. That means for every three votes Hamish gained through transfers from excluded candidates, Alan to win, would need more than seven. An impossible goal.

Because there is a binding poll in less than two months, re electoral systems, the public deserve accurate factual information. The only way the STV system can be understood is to study actual elections and follow the process. It is complicated to explain, as most people switch off, but with perseverance, it is understandable.

An STV election to elect a mayor consists of a series of iterations. At the first iteration all voters' 1st preference votes are counted and the quota calculated. If no candidate has more votes than the quota, the lowest polling candidate is excluded and the vote is then transferred to the next preference of the voters of that candidate. Votes become non-transferable if a voter has no other preference. That vote and voter are removed from the poll. This

process of iterations is repeated until a candidate has more votes than the quota and is declared elected.

The system is laborious and slow. After the 1st preference count, voter's ballot papers are inactive until their first preference candidate is excluded. If a voter's 1st preference candidate is excluded at the first iteration, their vote could be transferred to a different candidate at each following iteration, eventually assisting the voters least preferred candidate to be elected. If a voter's 1st preference candidate is excluded at, say the fifth iteration and their 2nd, 3rd, and 4th preference candidates have been excluded, only their 5th preference candidate would receive the transferred vote. Candidates who many voters would want as their 2nd preference but have low 1st preference votes, but will not get elected because they are excluded before they can receive these 2nd preference votes. There are thousands of different ballot papers, resulting in every voter being treated differently.

For the 2016 Porirua City Mayoral election 13,872 electors cast a valid vote. At the first iteration Murrell was winning by 309 votes, but lost to Tana by 164 votes at the fifth iteration. 53% of the voters gave their 1st preference vote to the two highest polling candidates. For those voters the election was the same as a First Past the Post-election, they either picked a winner or a loser. For those voters none of their other preference votes contributed to the election of a candidate. None of their votes were non-transferable.

It's a different story for the voters of the lowest polling candidates. By the last iteration, after all the lowest polling candidates had been excluded and their votes transferred, 2,262 - that's 35 % of those voters, had been removed from the ballot because they had neither one of the two leading candidates as a preference. Their votes were non-transferable. The consequence of that was that the new Mayor of Porirua leading by 164 votes was elected, not with a 50% majority as Baron states in his article, but with just 42.4% support from the 13,872 electors who had cast a valid vote.

We would be naïve to think that if those 2,262 voters had the choice of just the two leading candidates, they would choose neither. A two-round voting system used in many places in the world, would give those voters a choice and would treat all voters the same. The STV system has no mechanism to do that.

Because of non-transferable votes, the number of voters involved in deciding the outcome of the poll decreases. (At each iteration the total number of current candidate votes, plus the non-transferable votes, equals the total number of voters at the first iteration). This factor of non-transferable votes, plus the uneven involvement of voters and the fact that voters have no control over which of their preferences are used, raises doubts as to the validity of all STV elections. Why would we want such a complicated system?

Questions, comments, criticism. 0274 535 814.

- John Carson, Springfield

## Exhibition of Whanganui Postmarks and historical bottles at Community Arts Centre - September 3-10

Kevin is a history buff as well as a garden designer and he is bringing the two interests together in an exhibition at the Community Arts Centre from September 3 to 10. The exhibition complements all the events which are happening as part of Whanganui's Heritage Month.

His historical bottles collection has come from bottles from Whanganui businesses and includes some rare items. He also has a collection of Whanganui Postmarks including from when Whanganui was briefly 'Petre'. Kevin says that by 1900 the Whanganui district, including up the Whanganui River, had hundreds of postmarks with many shops having the right to receive letters.

The exhibition will also include some of Kevin's plants set among natural driftwood. He says, "I'm a bit of a plant nut." He has put into practice in his home what his business, Insite Landscapes does, transforming the property using tillandsia growing on



Kevin in his garden with a tillandsia

driftwood, a large variety of succulents, palms and bromeliads. He also loves orchids.

His interests include art and some of his

works on display will be for sale. He explains, "Most of my art works include comments on issues and on life in general."

## Sports Talk

with Mark Dawson

Of course, I should be writing about the wonders of test cricket in the light of the Black Caps thrilling win in Sri Lanka and the even more stunning Ashes triumph by Ben Stokes and England. But I will leave it to more astute observers to wax lyrical on those matters.

Instead, I turn to a popular theme - the healing power of sport and the way it can break down barriers and bring people together.

We are talking association football and a world cup tournament currently under way.

This one is not getting major international profile but perhaps it should. It's the Homeless World Cup taking place in the Welsh capital of Cardiff and involving more than 500 players from almost 50 countries.

Never heard of it? Me neither till a couple of weeks ago, but this is the 16th edition of an event which has given hope, joy and dignity to homeless people around the

globe.

The first Homeless World Cup was held in Austria in 2003 and the nearest it has been to us was in 2008 when Melbourne was the host. For the record, Mexico are the team to beat.

The frontman for the Cardiff tourney is Welsh actor and activist, Michael Sheen.

I thought Sheen's only connection to soccer was playing legendary manager, Brian Clough in The Damned United, the story of Cloughie's tumultuous 44 days in charge of Leeds United in 1974. He has also portrayed TV host, David Frost and former UK Prime Minister, Tony Blair to impressive effect.

"The Homeless World Cup transforms lives ... including mine," says Sheen.

"When I saw how people were drawn to football, people whom it would be almost impossible to connect with otherwise, I began to see the possibilities.

"People who had been isolated and excluded for years were making



Mark Dawson

friends, finding long-lost self-confidence, motivation to change, some dignity and pride instead of judgment and stigma."

Unfortunately, New Zealand and its housing crisis is not represented but perhaps Whanganui should consider entering a team in the next event. There's plenty of evidence of homelessness here and our register of those in need of housing has soared from 10 in 2015 to close to 100.

Any correspondence to this column can be directed to email: rivercitypress@xtra.co.nz which will be passed on to Mark.

\*\*\*

#### Election billboards

Dear Editor,

There seems to be quite a bit of controversy and finger pointing over election billboards. Some people in City Hall seem to think the laws they make only apply to others and not to themselves. Well there's a new Sheriff in town and his goal is "to keep the buggers honest" even when they cry and whinge and stir up a cesspit of venomous webb trolls to fight their fights for them.

I reckon these cowboys should just ride out of town gracefully on their old mare who continually tugs on the reins.

- Steve Baron

#### LETTERS TO THE EDITOR

Please keep Letters to the Editor to a maximum of 250 words. River City Press reserves the right to edit, amend or reject any letter. We will not publish abusive letters and will not act as a go-between disputing parties. Letters can be emailed to rivercitypress@xtra.co.nz



# Mainstreet Whanganui Heritage Market Day



In celebration of the inaugural  
Whanganui Heritage Month,  
Mainstreet Whanganui is hosting a heritage  
themed market day at Majestic Square  
& town centre.

The festivities will feature entertainment, delicious  
food stalls, vintage cars & unique market stalls!

**Saturday 31 August 2019**  
**11am – 3pm**





#### Brick and tile investment



NEW LISTING

**\$179,000**  
**WEB ID WGU70090**

#### WHANGANUI EAST 46A Nixon Street

To be sold by Deadline Sale at 2pm on Wednesday 11th September 2019. What a great, little property! This one bedroom 1940s duplex sits on a large fenced section, and is located in a popular street in Whanganui East. The kitchen and dining room are open plan and receive the morning sun. The lounge is at the front of the house, giving the bedroom the privacy of a backyard outlook. The bathroom has a bath with shower over and the laundry is conveniently positioned near the backdoor.

VIEW By Appointment

**Ritesh Verma**  
Mobile 027 577 7938  
Office 06 281 3721  
Home 06 345 6006  
teamritesh@pb.co.nz

**Bruce McGhie**  
Mobile 027 333 2587  
teamritesh@pb.co.nz

1  
1

#### Townhouse, handy location



NEW LISTING

**\$249,000**  
**WEB ID WGU70041**

#### TAWHERO 107A Carlton Avenue

A low maintenance townhouse in a great location, close to Carlton School and within walking distance to the Fitzherbert Avenue Shopping Centre - this property is a winner. The home is spacious, offering a large lounge/dining area with feature corner bay window that has views over Springvale Park. The kitchen has amazing conservatory windows and includes a breakfast bar into the living room creating the perfect open plan space for modern living.

VIEW By Appointment

**Ritesh Verma**  
Mobile 027 577 7938  
Office 06 281 3721  
Home 06 345 6006  
teamritesh@pb.co.nz

**Bruce McGhie**  
Mobile 027 333 2587  
teamritesh@pb.co.nz

2  
1  
1

#### Love this - make it yours



#### Perfectly positioned



#### Large character home



**\$699,000**  
**WEB ID WGU69905**

#### OTAMATEA 5 Lithgow Drive

Here is an opportunity that shouldn't be missed. A chance to enjoy all the bells and whistles of a newly built four bedroom home. The open plan living area will make entertaining family and friends a breeze, the wonderful modern kitchen is super easy to keep looking its best with a fantastic walk-in pantry set up to house all your bench top appliances. The master bedroom is a dream, large and spacious with en suite and a walk-in wardrobe to envy! There is an abundance of storage in this home.

VIEW By Appointment

**Ritesh Verma**  
Mobile 027 577 7938  
Office 06 281 3721  
Home 06 345 6006  
teamritesh@pb.co.nz

**Bruce McGhie**  
Mobile 027 333 2587  
teamritesh@pb.co.nz

4  
2  
2

#### Country living



#### Step inside ...



**\$579,000**  
**WEB ID WGU69908**

#### UPOKONGARO 396 State Highway 4

This large family home has been given the kind of renovation that makes you go "wow"! The attention to detail can be seen everywhere - classy kitchen tiling, black accessories in the bathrooms, feature lighting, double glazing and the amazing central heating system. The family will congregate in the sun-filled dining room that spills out to the deck once you fully open the bi-fold doors - already set up for you to enjoy summer! The lounge enjoys the same vantage point with river views.

VIEW By Appointment

**Ritesh Verma**  
Mobile 027 577 7938  
Office 06 281 3721  
Home 06 345 6006  
teamritesh@pb.co.nz

**Kayana Tahana-Hopkins**  
Mobile 022 096 8310  
teamritesh@pb.co.nz

4  
2  
2

**\$569,000**  
**WEB ID WGU69903**

#### COLLEGE ESTATE 33 Grey Street

Character filled homes in great locations don't come along every day! This property exudes all the charm and grandeur of yester-year with amazing feature ceilings, leadlight windows and timber fireplace surrounds. The kitchen will be a pleasure to cook in for family and friends, with modern Fisher & Paykel appliances, a fabulous centre island bench, and views to the garden. The adjoining dining area has a lovely window seat, and is the perfect place for dinner parties.

VIEW By Appointment

**Ritesh Verma**  
Mobile 027 577 7938  
Office 06 281 3721  
Home 06 345 6006  
teamritesh@pb.co.nz

**Bruce McGhie**  
Mobile 027 333 2587  
teamritesh@pb.co.nz

3  
2  
2+1

**\$379,000**  
**WEB ID WGU69958**

#### WHANGANUI EAST 9 Kapa Street

This lovely wee villa has awesome street appeal and has been the subject of a great renovation. Keeping the character of this 1910s villa with the classic hallway arch and the feature front door, the rest of the home has been given a top to toe make over. The corner kitchen and adjoining dining area are swamped in morning sunshine and that lovely clawfoot bath will be the ultimate way to relax at the end of the day. The formal lounge is a great space for some down time.

VIEW By Appointment

**Ritesh Verma**  
Mobile 027 577 7938  
Office 06 281 3721  
Home 06 345 6006  
teamritesh@pb.co.nz

**Bruce McGhie**  
Mobile 027 333 2587  
teamritesh@pb.co.nz

3  
1  
2+

**\$370,000**  
**WEB ID WGU69049**

#### GONVILLE 13 Mason Terrace

This four bedroom villa will surprise you! Sitting quietly in a corner of Mason Terrace the home offers two generously sized living areas, one opening to the front deck and the other to the rear deck and private backyard - so no matter where the sun is you can find a spot to relax or entertain. The kitchen is central to both living areas creating a great space for family or functions. The modern black and white bathroom is in keeping with the character of the house and there is a second shower.

VIEW By Appointment

**Ritesh Verma**  
Mobile 027 577 7938  
Office 06 281 3721  
Home 06 345 6006  
teamritesh@pb.co.nz

**Bruce McGhie**  
Mobile 027 333 2587  
teamritesh@pb.co.nz

4  
2  
1

#### Modern chic



**\$295,000**  
**WEB ID WGU69790**

#### WHANGANUI EAST 81 Wakefield Street

We are not kidding when we tell you every detail in this lovely family home has been taken care of. Sitting quietly on a corner section, you would be forgiven for not noticing it, but we are giving you the opportunity to step inside and let the clean, calm modern interior of this home wash over you. Tastefully decorated throughout, this three bedroom home is insulated, kept warm with gas heating and has outdoor living for the summer months. The kitchen is delightfully modern.

VIEW By Appointment

**Ritesh Verma**  
Mobile 027 577 7938  
Office 06 281 3721  
Home 06 345 6006  
teamritesh@pb.co.nz

**Bruce McGhie**  
Mobile 027 333 2587  
teamritesh@pb.co.nz

3  
1  
1